



Tarragon Road, Maidstone, Kent, ME16 0UR

Guide Price £450,000 - £475,000



**** GUIDE PRICE: £450,000 - £475,000 **** The property is situated in one of Maidstone's most sought-after residential areas off Queens Road. Set on the western outskirts of the town centre, the immediate area has excellent local amenities and is close to Maidstone Hospital. There is easy access to the M20 motorway, providing fast travel to London and the Kent coastline. The county town itself provides a wide range of shopping, educational and social facilities, together with two mainline stations.

The property comprises a quite beautifully presented four bedroom family house which has been the subject of very considerable expenditure by our client including newly installed double glazing. The house has attractive brick elevations under a tiled roof and benefits from gas fired central heating. Tenure: Freehold. EPC Rating: C. Council Tax Band: E.



ACCOMMODATION

Ground Floor:

Entrance door to ...

Entrance Hall

Cloaks cupboard. Staircase to first floor. Understairs cupboard.

Cloakroom

Low level WC. Wash hand basin. Extractor fan.

Snug/Sitting Room

Double glazed window to front elevation.

Kitchen/Diner

Newly installed kitchen with extensive range of work surfaces having cupboards and drawers under. Inset one and a half bowl sink unit with mixer tap. CDA 5-ring gas hob with extractor fan over. Belling double oven and grill. Built-in microwave. Range of wall cupboards. Plumbing for dishwasher and washing machine. Tiled flooring. Double glazed window to rear elevation. Opening to ...

Conservatory

Double aspect with double glazed double doors opening through to the garden.

First Floor:

Landing

Staircase to second floor. Airing cupboard housing hot water tank.

Lounge

Double glazed windows to rear elevation. Central feature ornamental fireplace. Five wall light points.

Bedroom One

Double glazed doors opening to Juliet balcony. Built-in wardrobe cupboard. Door to ...

Luxury En-suite Shower Room

Shower cubicle with thermostatically controlled shower. Low level WC. Wash hand basin in vanity unit with drawers under. Tiled walls. Extractor fan. Inset ceiling lighting. Chrome heated towel rail.

Second Floor:

Landing

Access to loft space.

Bedroom Two

Double glazed windows to front elevation. Built-in wardrobe cupboards.

Bedroom Three

Double glazed window to rear elevation.

Bedroom Four

Double glazed window to rear elevation.

Family Bathroom

Panelled bath with mixer tap, thermostatically controlled shower and fitted shower screen. Low level WC. Wash hand basin in vanity unit with drawers under. Tiled walls. Extractor fan. Inset ceiling lighting. Shaver point. Heated towel rail.

EXTERNALLY

Attractive garden to the front of the house laid to lawn with well-stocked flower borders and neat laurel hedging. The REAR GARDEN is enclosed with paviour and leading on through to DOUBLE CARPORT (16'7 x 15'7). There is a garden store.


VIEWING

Viewing strictly by arrangements with the Agent's Head Office: 52-54 King Street, Maidstone, Kent ME14 1DB. Tel: 01622 756703.

DIRECTIONS

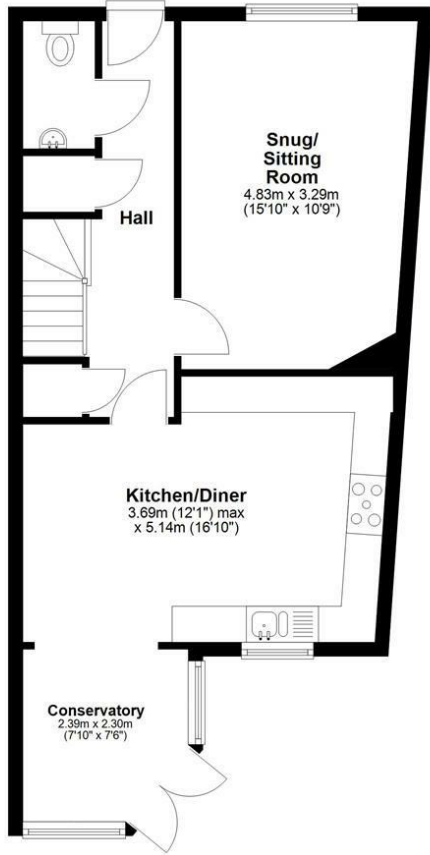
Leave Maidstone on the A26 Tonbridge Road. Proceed to Barming. Turn right into Queens Road and first left into Tarragon Road, where the property will be found after a short distance on the left hand side.

Energy Efficiency Rating

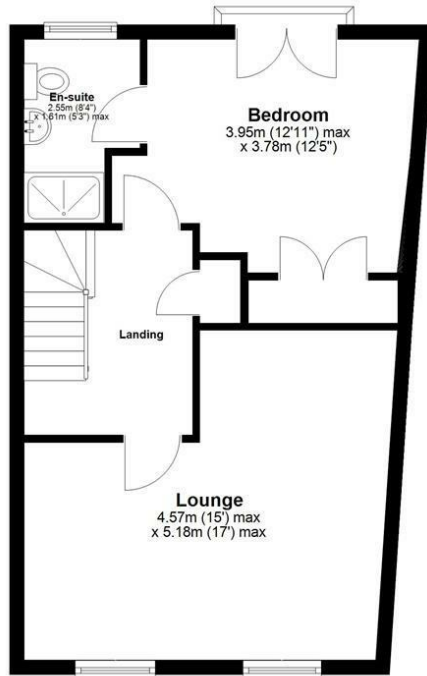
	Current	Potential
<i>Very energy efficient - lower running costs</i>		
(92 plus) A		
(81-91) B		
(69-80) C	76	80
(55-68) D		
(39-54) E		
(21-38) F		
(1-20) G		
<i>Not energy efficient - higher running costs</i>		
England & Wales	EU Directive 2002/91/EC	

Page & Wells limited for themselves and for the vendors of this property whose agents they are give notice that: 1. These particulars do not constitute any part of, an offer or a contract. 2. All statements contained in these particulars as to this property are made without responsibility on the part of Page & Wells Limited or the Vendor. 3. None of the statements contained in these particulars as to the property is to be relied on as statements or representations of fact. 4. Any intending purchaser must satisfy himself by inspection or otherwise as to the correctness of each of the statements contained in these particulars. 5. The vendor does not make or give, and neither Page & Wells Limited nor any person in their employment has any authority to make or give any representation whatsoever in relation to this property. These particulars are supplied on the understanding that all negotiations are carried out throughout Page & Wells Limited. Properties with a reference prefixes EAA are those which Page & Wells Limited disclose an interest in accordance with the provisions of the Estates Agents Act 1979

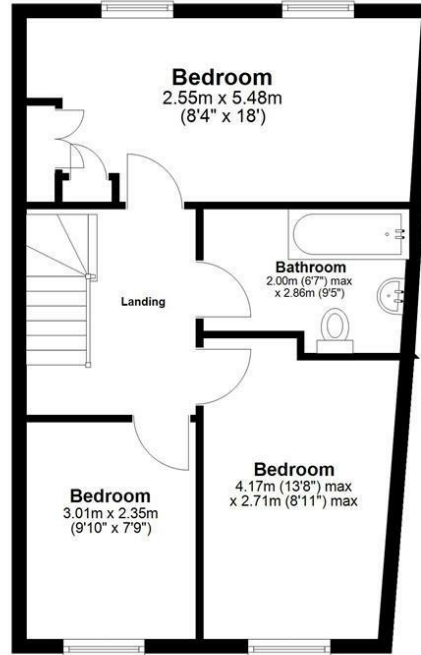
Ground Floor



First Floor



Second Floor



Total area: approx. 131.9 sq. metres (1420.1 sq. feet)

