



51 Jenkins Grove, Portsmouth

Offers in Region of £375,000

 chinneckshaw



# 51 Jenkins Grove

Portsmouth

This spacious five-bedroom terraced home is perfectly suited for modern family living or anyone seeking generous, flexible space. The bay-fronted living room offers a warm and inviting setting, ideal for relaxing evenings. A well-proportioned kitchen and breakfast room forms the heart of the home, perfect for everyday meals and social gatherings. With two bathrooms, busy mornings are made easy, while the generously sized bedrooms provide versatility for home working, guests, or hobbies. The layout is both practical and adaptable, designed to grow with your needs. Ideally located, the property is just a short walk from Baffins Pond, Tangier Park, and Milton Common, offering great outdoor space. Excellent transport links and road networks nearby ensure easy access to schools, work, and the city centre, making this a superb all-round home.

**Material Information** • Tenure: Freehold • Council Tax: Band C • Electricity: Mains Supply • Heating: Gas • Water Supply: Mains Supply • Sewage: Mains Supply • Broadband: Standard, Superfast and Ultrafast Fibre are all available in this area • Parking: On Street • Mobile: Ofcom official website checker states that EE, Vodafone, O2 and Three available in the area • Flood Risk: Low Risk

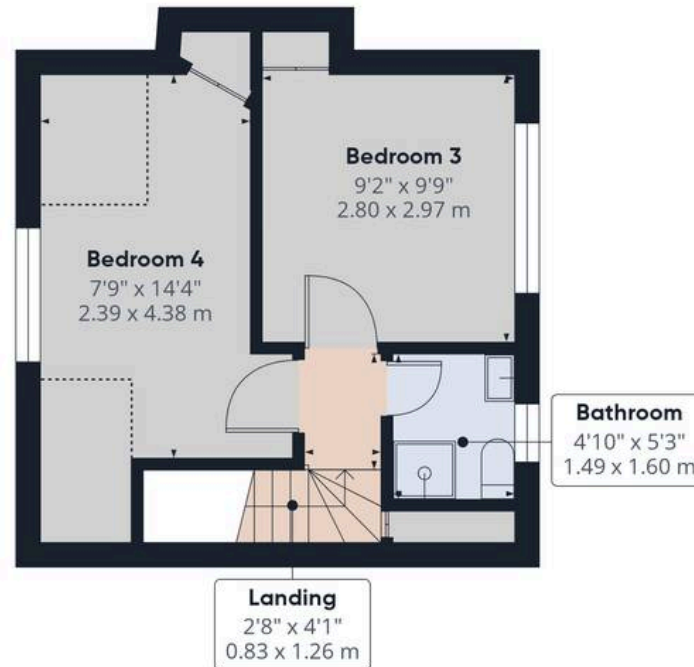




Ground Floor



Floor 1



Floor 2



**Approximate total area<sup>(1)</sup>**

1279 ft<sup>2</sup>

119 m<sup>2</sup>

**Reduced headroom**

37 ft<sup>2</sup>

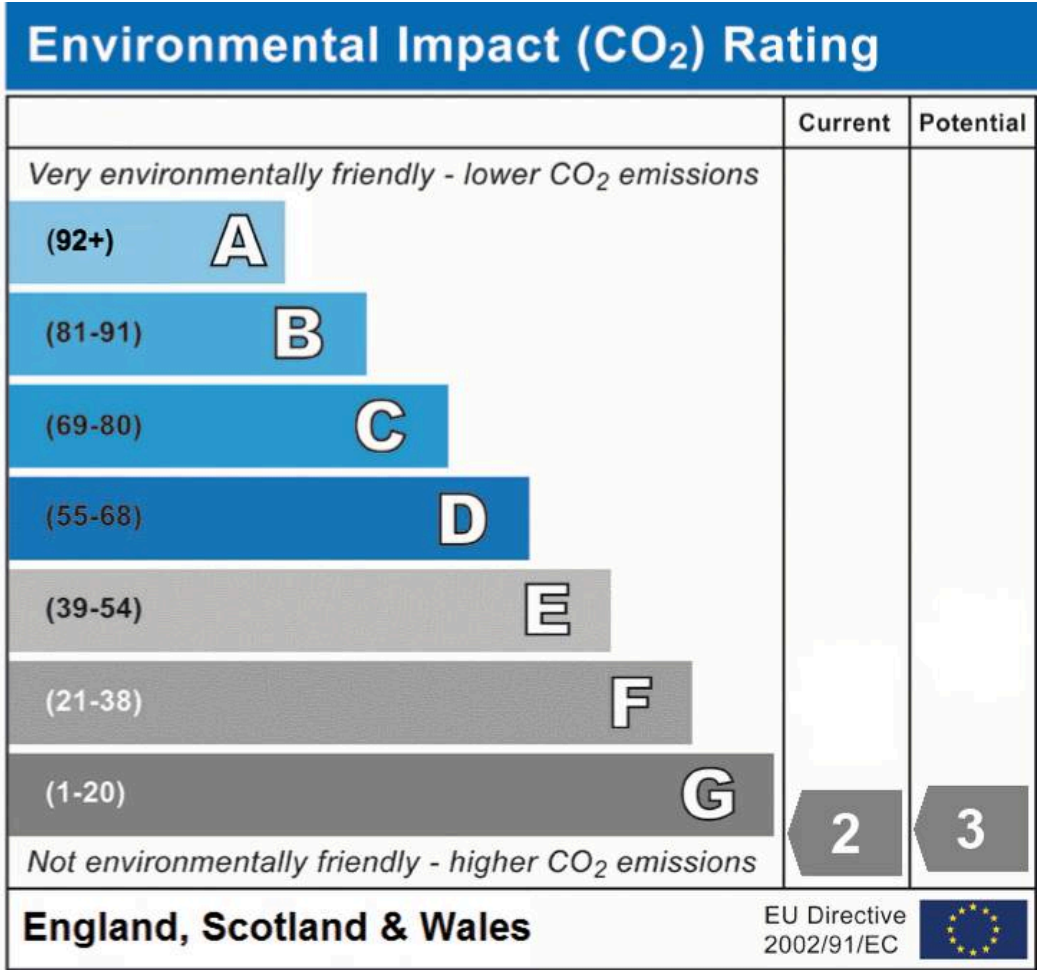
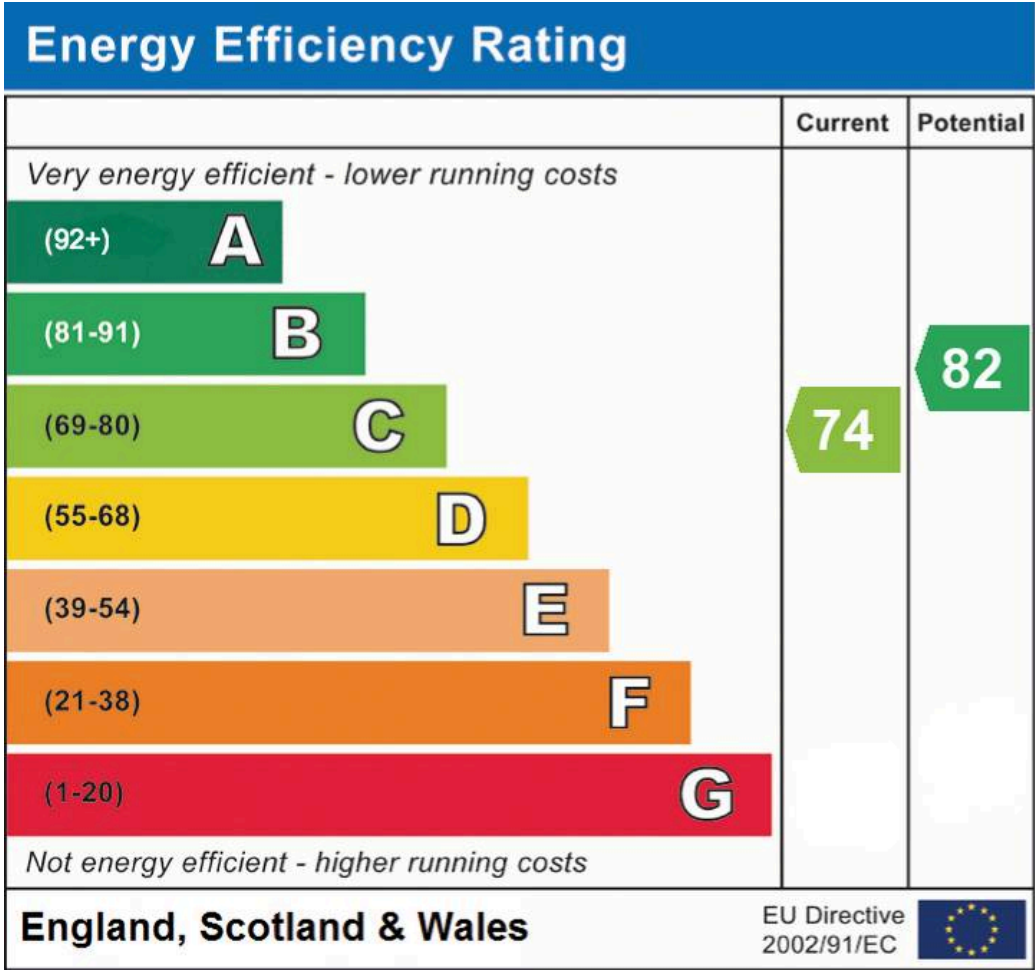
3.5 m<sup>2</sup>

(1) Excluding balconies and terraces

Reduced headroom

----- Below 5 ft/1.5 m

Calculations reference the RICS IPMS 3C standard. Measurements are approximate and not to scale. This floor plan is intended for illustration only.



# Chinneck Shaw

Bridge House, Milton Road, Portsmouth – PO3 6AN

023 9282 6731

hello@chinneckshaw.co.uk

www.chinneckshaw.co.uk/

Chinneck Shaw, Bridge House, Milton Road, PO3 6AN Consumer Protection from Unfair Trading Regulations 2008: These details are for guidance only and complete accuracy cannot be guaranteed. If there is any point which is of particular importance, verification should be obtained. They do not constitute a contract or part of a contract. All measurements are approximate. No guarantee can be given with regard to planning permissions or fitness for purpose. No apparatus, equipment, fixture or fitting has been tested. Items shown in the photographs are NOT necessarily included. Interested Parties are advised to check availability and make an appointment to view before travelling to see a property.