

for sale

£280,000



Church Croft Road Northampton NN7 2PG

A beautifully presented three bedroom semi-detached home, situated in the highly sought-after village of Roade and finished to a high standard throughout. Viewing is highly recommended.

Church Croft Road Northampton NN7 2PG

Entrance Hall

Door to side elevation. Radiator. Stairs rising to first floor landing. doors leading to lounge, kitchen/ diner, bathroom and bedroom three/ study.

Bedroom Three/ Study

Double glazed window to the rear elevation. Radiator.

Lounge

Two double glazed windows to the front elevation. Two radiators.

Kitchen/ Diner

Fitted with a range of wall and base level units. Stainless steel sink and drainer set beneath the work surface with tiling to splashback areas. Integrated fridge freezer. Plumbing for washing machine, dishwasher, tumble dryer. Radiator. Central heating boiler. Two double glazed windows to the side and rear elevation. Courtesy door to the side elevation.

Bathroom

Three piece white suite comprising bath with shower over, low level flush wc and wash hand basin with tiling to splash back areas. Heated towel rail. Double glazed window to the side elevation.

First Floor Landing

Stairs rising from entrance hall. Doors leading to two bedrooms.

Bedroom One

Double glazed window to the front elevation. Radiator.

Bedroom Two

Double glazed window to the rear elevation. Cupboard. Radiator.

Rear Garden

Laid to lawn. Patio area ideal for entertaining and relaxation. Gated access to the front of the property. Retaining timber fencing.

Front Garden

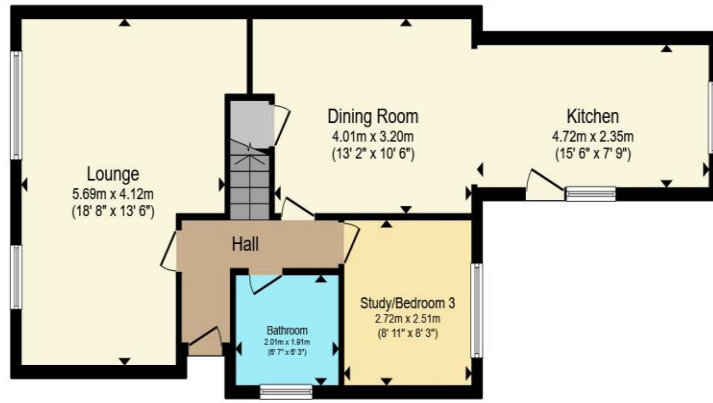
Pathway leading to front door. Driveway providing off road parking space.

Garage

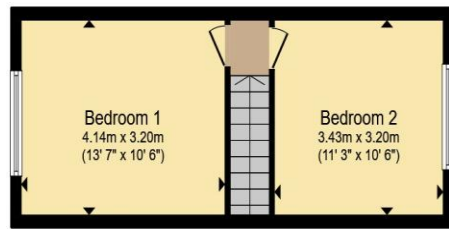
Single detached garage. Up and over door.







Ground Floor



First Floor

Total floor area 91.9 m² (990 sq.ft.) approx

This floor plan is for illustrative purposes only. It is not drawn to scale. Any measurements, floor areas (including any total floor area), openings and orientation are approximate. No details are guaranteed, they cannot be relied upon for any purpose and they do not form part of any agreement. No liability is taken for any error, omission or misstatement. A party must rely upon its own inspection(s). Powered by www.propertybox.io



To view this property please contact Connells on

T 01604 706644
E woottonfields@connells.co.uk

11 Tudor Court Wootton Hope Drive Wootton
 NORTHAMPTON NN4 6FF

Property Ref: WFL408746 - 0003

Tenure:Freehold EPC Rating: C

Council Tax Band: C

view this property online connells.co.uk/Property/WFL408746



1. MONEY LAUNDERING REGULATIONS Intending purchasers will be asked to produce identification documentation at a later stage and we would ask for your co-operation in order that there will be no delay in agreeing the sale. 2. These particulars do not constitute part or all of an offer or contract. 3. The measurements indicated are supplied for guidance only and as such must be considered incorrect. Potential buyers are advised to recheck measurements before committing to any expense. 4. We have not tested any apparatus, equipment, fixtures, fittings or services and it is in the buyers interest to check the working condition of any appliances.

Connells Residential is registered in England and Wales under company number 1489613, Registered Office is Cumbria House, 16-20 Hockliffe Street, Leighton Buzzard, Bedfordshire, LU7 1GN. VAT Registration Number is 500 2481 05.

see all our properties at www.connells.co.uk | www.rightmove.co.uk | www.zoopla.co.uk