



Heathfield Road, W3

£1,500,000

An imposing semi-detached six bedroom family home located in the popular Mill Hill Conservation Area. The property offers almost 2300 sq.ft of accommodation, has a garage, off street parking, a large garden and is offered with no onward chain.



This impressive period property consists of a large entrance hallway, a bay fronted reception, an eat-in kitchen and a further double reception room with doors opening out to the large rear garden. There is also an office overlooking the garden and a downstairs bathroom.

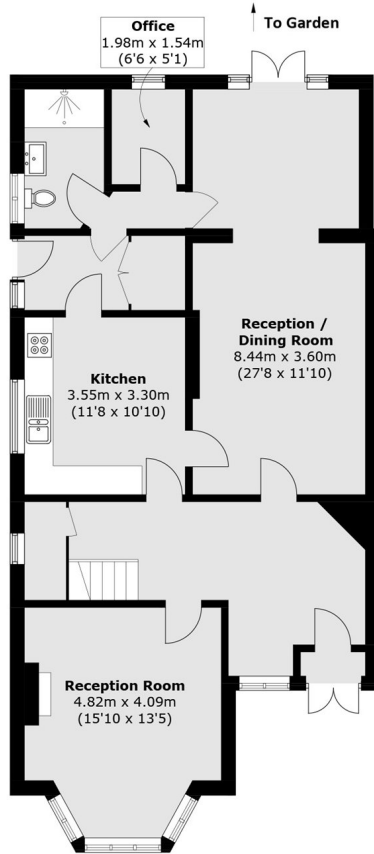
Over the top two floors are six bedrooms and a family bathroom. The property offers the opportunity to modernise and there would be further potential to extend subject to the usual consents.

Heathfield Road is a prime road within the Mill Hill Conservation Area and is within half a mile of Gunnersbury Park

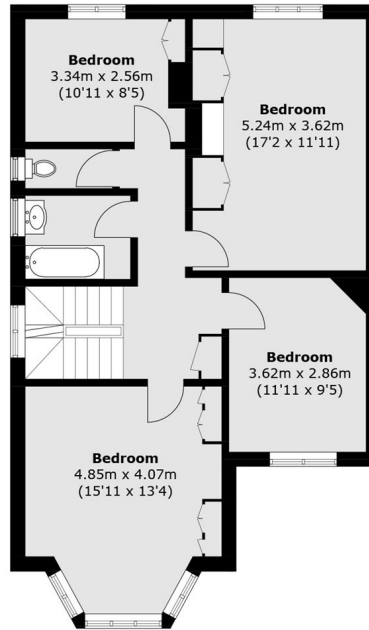
Heathfield Road is within 200 metres of Acton Town station and is less than half a mile from South Acton station both of which provide excellent access into town.

- Six Bedrooms • Semi-Detached • Large Garden •
 - Garage • Off Street Parking • No Onward Chain •
-

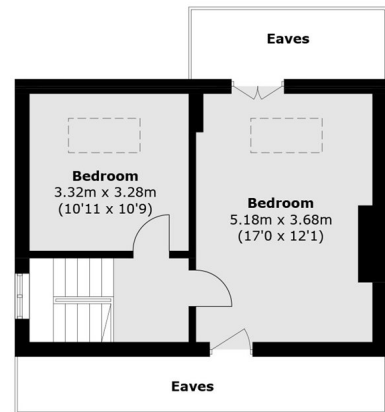




Ground Floor



First Floor



Second Floor

Total area (approx.): 211.4 sq. m (2275.4 sq. ft)
(Excluding Eaves)

Robertson Smith & Kempson Acton Sales
137 High Street, Acton,
London, W3 6LY
020 8896 3996
actonsales@robertsonsmithandkempson.co.uk

Energy Rating: E. We aim to make our particulars both accurate and reliable. However they are not guaranteed; nor do they form part of an offer or contract. If you require clarification on any points then please contact us, especially if you're traveling some distance to view. Please note that appliances and heating systems have not been tested and therefore no warranties can be given as to their good working order.