



**Chiltern Park Avenue, Berkhamsted HP4 1EU**



Situated in a highly sought-after residential area of Berkhamsted, this four-bedroom detached family home presents an exciting opportunity for buyers looking to put their own stamp on a property. The ground floor offers well-balanced accommodation, beginning with a welcoming entrance hall leading to a convenient cloakroom WC. The bright and airy lounge provides a comfortable living space and flows seamlessly into a separate dining area, creating an ideal setting for both everyday family life and entertaining. The adjoining kitchen offers practicality, while ample downstairs storage enhances the home's functionality for busy households. Upstairs, the property comprises four generously sized bedrooms, all offering excellent space and versatility, alongside a family bathroom. Externally, the home benefits from a fantastic south-facing rear garden, well enclosed and perfect for enjoying outdoor living. To the front, there is driveway parking and access to a garage, adding further convenience. Offered to the market chain-free, this property represents a superb opportunity to acquire a spacious, well-maintained home in a popular Berkhamsted location, with exciting potential. The property is conveniently located 0.9 miles from Berkhamsted train station, with access on foot to the edge of Ashridge Wood approx 0.3 miles away and the Grand Union Canal less than 0.2 miles away.





## welcome to Chiltern Park Avenue, Berkhamsted

- Four double bedroom detached family home
- Chain-free sale
- Bright lounge opening into dining area
- South-facing, well-enclosed rear garden
- Driveway parking and garage

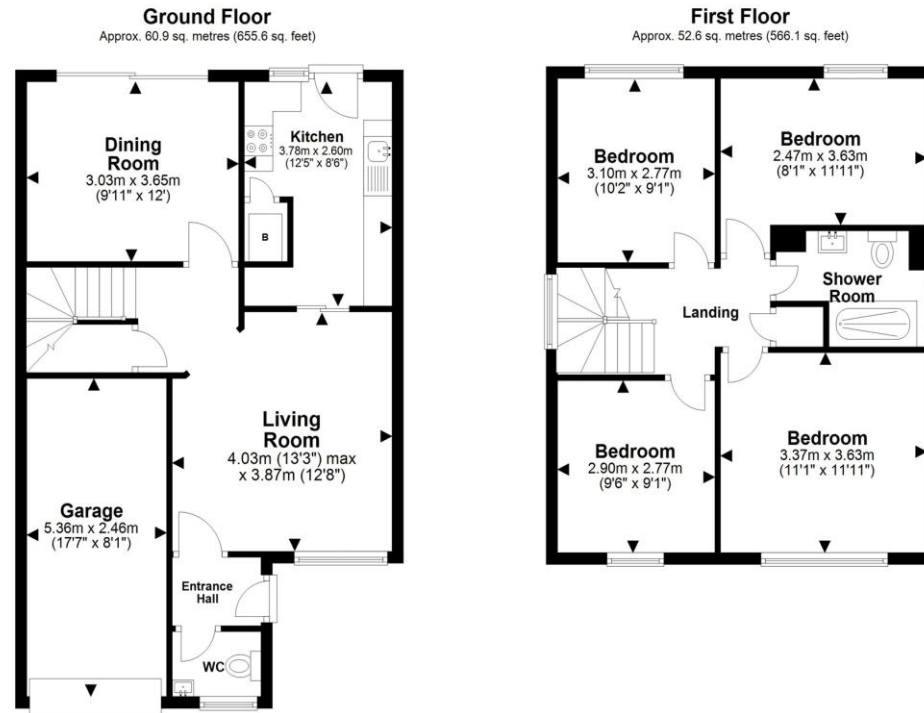
Tenure: Freehold EPC Rating: D

Council Tax Band: E

offers over

# £750,000

A spacious and well maintained four double bedroom detached family home in a popular Berkhamsted location, offered chain-free. Benefiting from a bright lounge, separate dining area, ample storage, south-facing garden, driveway parking and garage.



Total area: approx. 113.5 sq. metres (1221.7 sq. feet)

The Floor Plan is not to Scale and measurements and areas shown are approximate and therefore should be used for illustrative purposes only. The plan has been prepared with due diligence and whilst we have confidence in the information produced it should not be relied upon. Maximum lengths and widths are represented on the plan. If there are any aspects of particular importance, you should carry out or commission your own inspection of the property. Copyright © SKMSTUDIO

Plan produced using PlanUp.□

**check out more properties at** [brownandmerry.co.uk](http://brownandmerry.co.uk)  
**see all our properties on** [zoopla.co.uk](http://zoopla.co.uk) | [rightmove.co.uk](http://rightmove.co.uk) | [sequencehome.co.uk](http://sequencehome.co.uk)



Property Reference:  
BKH103331- 0004

1. MONEY LAUNDERING REGULATIONS Intending purchasers will be asked to produce identification documentation at a later stage and we would ask for your co-operation in order that there is no delay in agreeing the sale. 2. These particulars do not constitute part or all of an offer or contract. 3. The measurements indicated are supplied for guidance only and as such must be considered incorrect. Potential buyers are advised to recheck measurements before committing to any expense. 4. We have not tested any apparatus, equipment, fixtures or services and it is in the buyers interest to check the working condition of any appliances. 5. Where an EPC, or a Home Report (Scotland only) is held for this property, it is available for inspection at the branch by appointment. If you require a printed version of a Home Report, you will need to pay a reasonable production charge reflecting printing and other costs. 6. We are not able to offer an opinion either written or verbal on the content of these reports and this must be obtained from your legal representative. 7. Whilst we take care in preparing these reports, a buyer should ensure that his/her legal representative confirms as soon as possible all matters relating to title including the extent and boundaries of the property and other important matters before exchange of contracts.



**01442 870444**



[berkhamsted@brownandmerry.co.uk](mailto:berkhamsted@brownandmerry.co.uk)



124 High Street, BERKHAMSTED,  
Hertfordshire, HP4 3AT



**[brownandmerry.co.uk](http://brownandmerry.co.uk)**