

## Fawcett Close, SW16

### £330,000

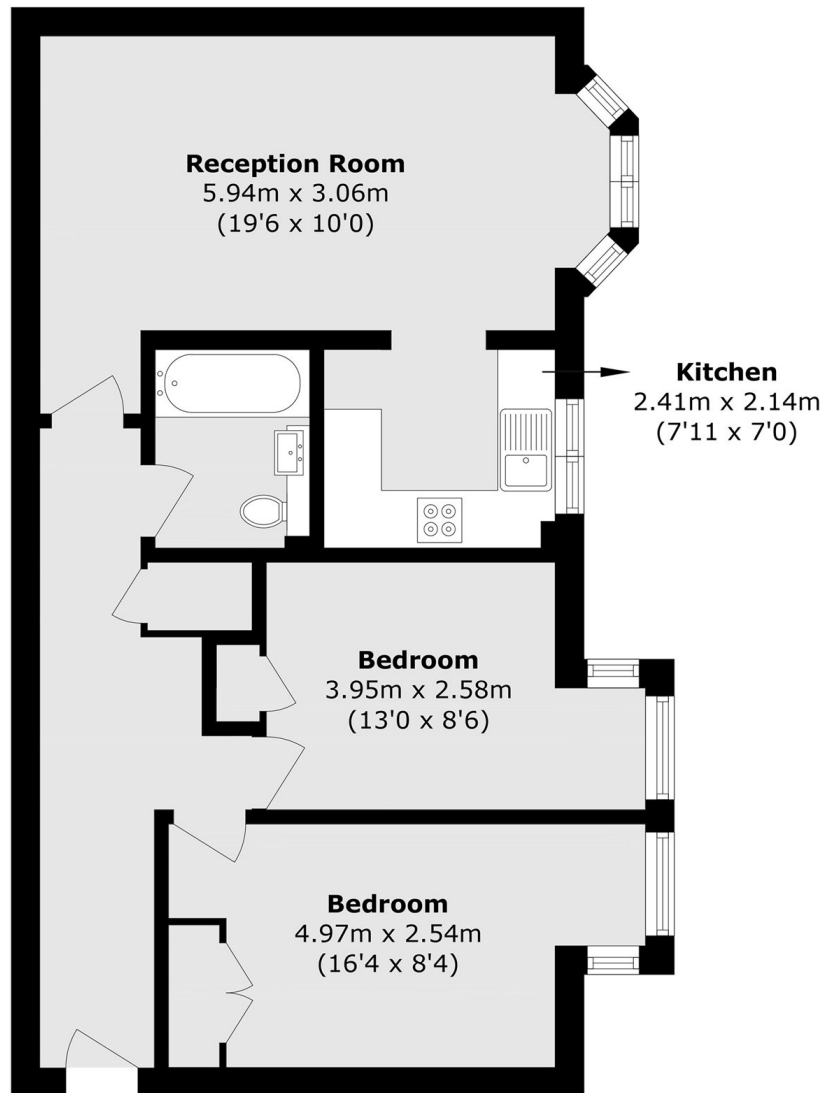
A perfect first step onto the property ladder, this well presented two bedroom property is set within a quiet residential development. The property features a modern kitchen, a spacious and bright reception room, two double bedrooms, and the added benefit of an allocated parking space.

Fawcett Close is a rarely available cul-de-sac, ideally positioned within a short walk of Streatham Common. Residents can also take a short bus journey to Streatham Hill, known for its vibrant mix of restaurants, bars, and excellent transport connections.

### Features

- Allocated Parking Space
- Two Double Bedrooms
- Modern Development
- Communal Garden
- Separate Kitchen

# Fawcett Close, London, SW16



Total area (approx.): 61.1 sq. m (657.6 sq. ft)