



**E&M**  
PROPERTY SOLUTIONS



7 Beatrice Avenue, Burnley, BB12 6DP  
Offers in the region of £159,950





## 7 Beatrice Avenue, Burnley, BB12 6DP

Offers in the region of £159,950

A beautifully presented three-bedroom mid-terrace property located on the popular Beatrice Street, Burnley (BB12), offered for sale with no onward chain. This attractive home is fully modern throughout and ready to move into, making it ideal for first-time buyers, families, or investors.

### Key Features:

- Three well-proportioned bedrooms
- Two spacious reception rooms
- Separate modern kitchen
- Stylish family shower room
- Front and rear gardens
- Fully refurbished and finished to a high standard
- No onward chain

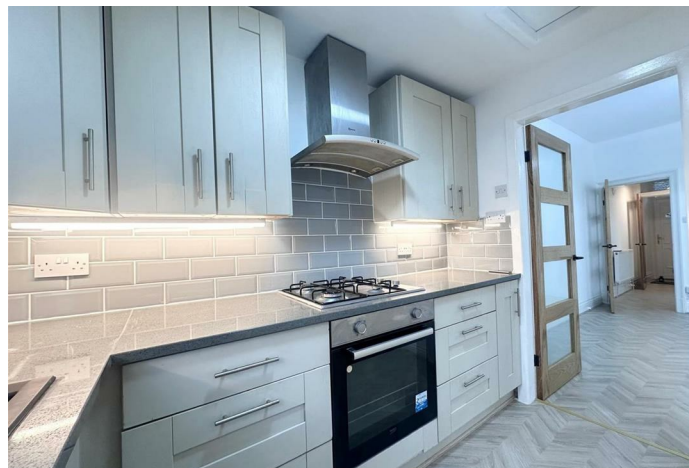
The property offers bright and versatile living accommodation, combining modern fittings with comfortable living spaces. Externally, there are gardens to both the front and rear, providing ideal

## Description



## Situation

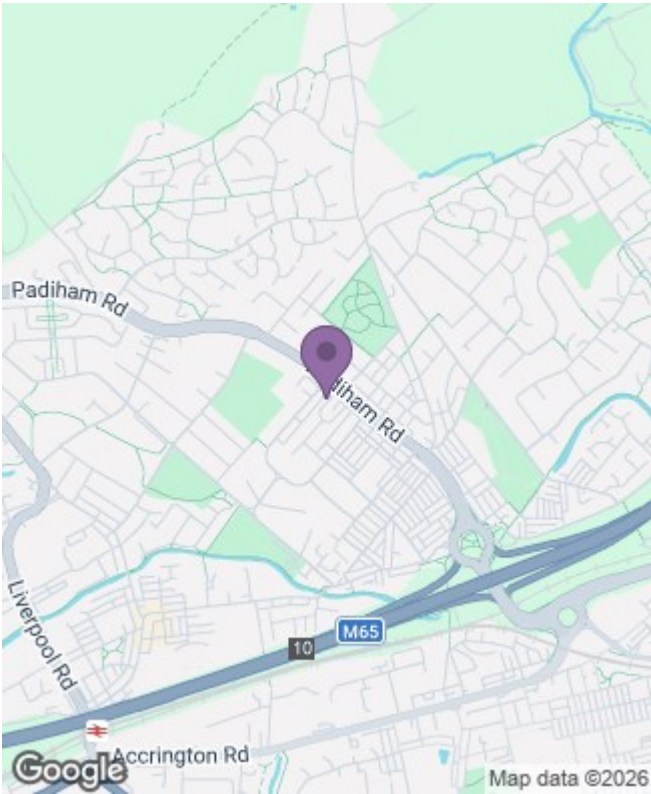
null  
Council Tax Band: A  
Available:





Floor Plans

Area Map



Energy Performance Graph

