



Guide Price
£400,000

Freehold

2x  1x  2x 

**Westmeads Road,
Whitstable, Kent, CT5**

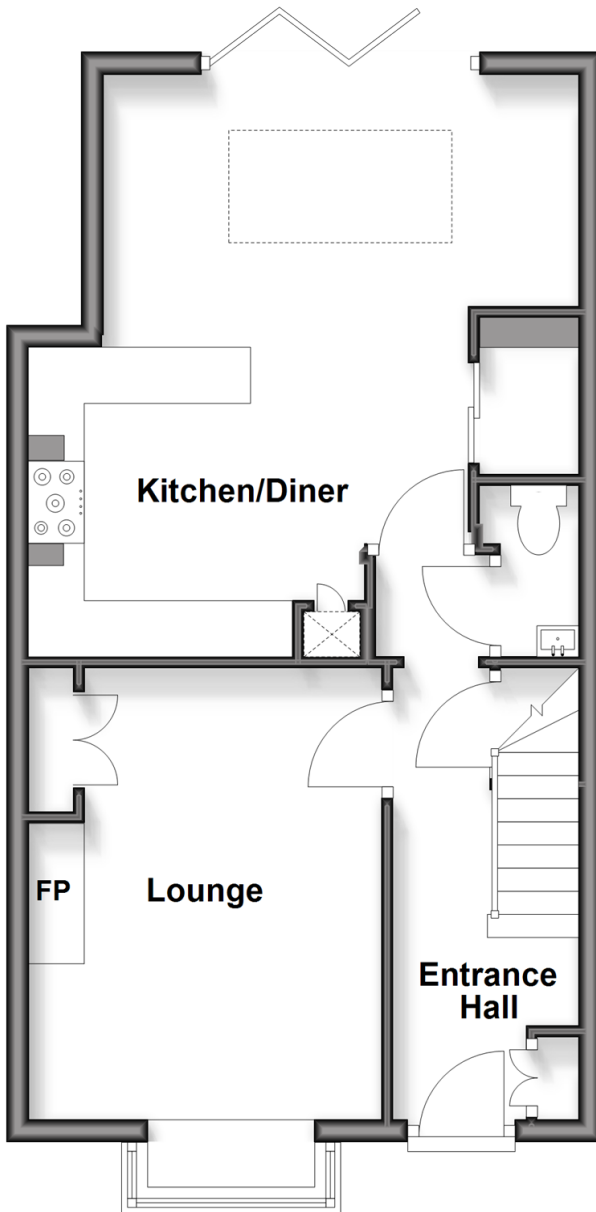
OVER 60?

Secure this property
for up to **59% less!**

Wards
Helping you move forwards

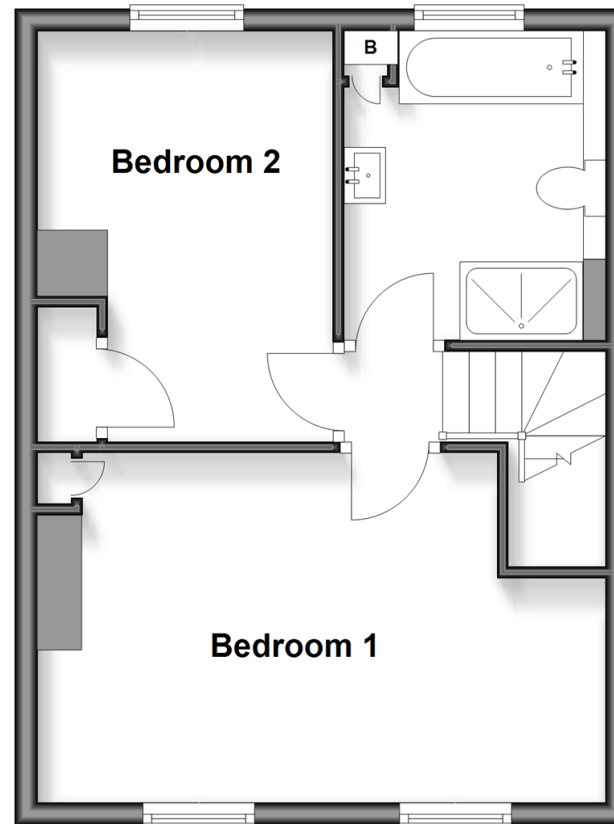
Ground Floor

Approx. 44.7 sq. metres (481.7 sq. feet)



First Floor

Approx. 35.1 sq. metres (377.4 sq. feet)



Accommodation

GROUND FLOOR

Entrance Hall

Lounge: 14'7 x 11'2 (4.45m x 3.41m)

Kitchen/Diner: 18'8 x 13'10 (5.69m x 4.22m)

Cloakroom

FIRST FLOOR

Landing

Bedroom 1 : 16'6 x 10'7 (5.03m x 3.23m)

Bedroom 2 : 12'2 x 8'5 (3.71m x 2.57m)

Bath & Shower Room

OUTSIDE

Front Garden

Rear Garden

Parking Space



Main features

- Chain-free
- Open-plan kitchen/diner with roof lantern and bi-fold patio doors
- Parking to the rear of the garden, with access via the 10-foot way off Diamond Road
- Ground floor cloakroom, and first floor bath & shower room
- Recently renovated throughout



Nearest Schools

Primary Schools: St Mary's Catholic Primary 0.2 miles, Whitstable and Seasalter Endowed C of E Junior School 0.3 miles, Whitstable Junior School 0.4 miles

Secondary Schools: The Whitstable School 0.6 miles,



Transport Information

Train Stations: Whitstable 0.1 miles, Chestfield & Swalecliffe 1.4 miles, Herne Bay 3.6 miles



Address

Westmeads Road, Whitstable, Kent, CT5



Directions

For directions to this property please contact us.



Wards
Helping you move forwards

Call Whitstable Branch 01227 772272 ■ wardsofkent.co.uk



■ Through a Homewise Home For Life Plan people aged 60+ can secure this property for up to 59% less, by purchasing a Lifetime Lease



12033981/20260319/NF/NF