



1.1, 108, MANOR
CRESCENT, GOUROCK, PA19 1UP



 neillclerk
ESTATE AGENTS



Description

This is a rare opportunity to purchase a stunning, immaculately presented upgraded two bedroom FIRST FLOOR FLAT lying within this sought after waterfront location. There are enviable views towards Cardwell Bay and the River Clyde. The property lies close to local shops, amenities and transport facilities including Fort Matilda railway station with frequent service to Glasgow.

Impressive specification includes: double glazing and gas central heating system. There is a private section of garden to the side of the entrance path comprising a decked area. The communal rear lawned drying green is south facing and there is a compact paved private patio area. A communal outbuilding offers shared storage.

Highly impressive apartments comprise: bright front facing Lounge with two light window benefiting from window shutters overlooking the Cardwell Bay. This character filled room features a panelled ceiling with downlighters, focal point stone wall, shelved alcove and fireplace.

The luxury refitted Kitchen Diner is an airy room with rear window and UPVC double glazed door. There is a range of quality high gloss units, grained style work surfaces and splashback tiling. Appliances include: extractor hood, gas hob, electric oven, integrated washer dryer and dishwasher. There is space for table and chairs within this apartment. A cupboard provides useful storage. An Inner Hallway leads to the other rooms within the flat and also offers a hatch leading to floored storage loft.

There are two double sized Bedrooms. The front facing 1st bedroom enjoys views to the River Clyde. The luxury refitted Shower Room features a three piece suite comprising: vanity wash hand basin set in high gloss unit, wc and double sized shower cubicle with chrome style shower offering two shower heads. Additional benefits include: chrome heated towel rail, wall / floor tiling and decorative panelled ceiling with downlighters. EPC = C.

Measurements

Kitchen Diner
2.44m x 5.05m (8'0 x 16'7)

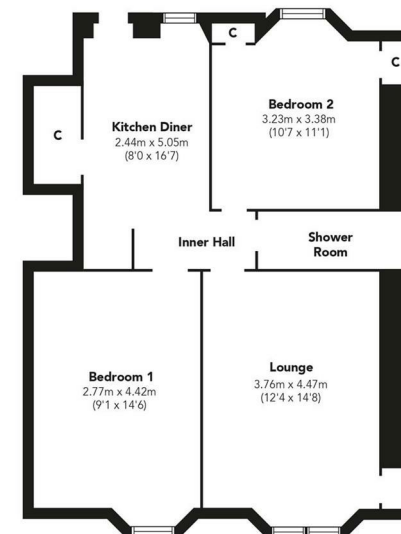
Inner Hall
2.34m x 1.17m (7'8 x 3'10)

Lounge
3.76m x 4.47m (12'4 x 14'8)

Bedroom 1
2.77m x 4.42m (9'1 x 14'6)

Bedroom 2
3.23m x 3.38m (10'7 x 11'1)

Shower Room



Floorplans are indicative only - not to scale
Produced by Plushplans 









The next step..



To view call 01475 888400. Speak to us 7 days a week until 11pm every day to book your viewing appointment.

House to sell or rent?

Call 01475 888400 to book your free market appraisal.

Require a solicitor?

Ask us to supply a free legal quotation from Neill Clerk & Murray, Solicitors.

www.neillclerkmurray.co.uk

Stay fully up-to-date by following Neill Clerk on:



**60 West Blackhall Street
Greenock
Renfrewshire
PA15 1UY**

t: 01475 888400

e: sales@neillclerk.co.uk

w: www.neillclerk.co.uk



Agents Notes:

These sales particulars are set out as a general outline only, issued in good faith, but do not constitute representations of fact and do not form part of any offer or contract. Any services, equipment, appliances, fittings or central heating systems have not been tested and no warranty is given or implied that these are in working order. All measurements are approximate and for guidance only.

Neither Neill Clerk Estate Agents nor any of its employees or agents has any authority to make or give any representation or warranty whatever in relation to this property.