

- Detached Bungalow
- Rural Setting
- Short Drive to Epping Town
- Good Size Garden
- Close to Motorway
- Bright and Spacious Layout

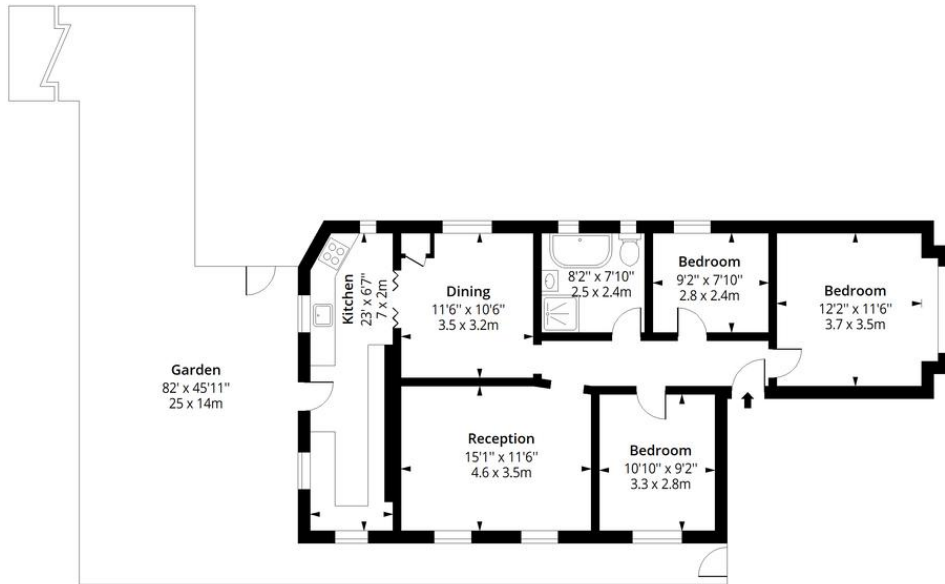
Situated in the rural outskirts of North Weald, this impressive detached bungalow offers three bedroom accommodation with appealing kitchen diner and good size garden. Generous parking space available on the driveway



27 Weald Bridge Road
CM16 6ES
£1,950 pcm

Weald Bridge Road CM16

Approx. Gross Internal Area 967 Sq Ft - 89.83 Sq M



Ground Floor

Floor Area 967 Sq Ft - 89.83 Sq M



Measured according to RICS IPMS2. Floor plan is for illustrative purposes only and is not to scale. Every attempt has been made to ensure the accuracy of the floor plan shown, however all measurements, fixtures, fittings and data shown are an approximate interpretation for illustrative purposes only. 1 sq m = 10.76 sq feet.

Date: 6/7/2026

Stevenette

%epcGraph_c_l_230%

5a Simon Campion Court, 232-234 High Street, Epping, Essex, CM16 4AU

Tel: 01992 563090

Email: lettings@stevenette.com



@StevenetteandCoLLP



@StevenetteandCo



Whilst every care has been taken in the preparation of these sales particulars, they are for guidance purposes only and no guarantee can be given as to the working condition of the various services and appliances. Measurements have been taken as accurately as possible but slight discrepancies may inadvertently occur. The agents have not tested appliances or central heating services. Interested applicants are advised to make their own enquiries and investigation before finalising their offer purchase.