



MAULDEN MEADOWS





LUXURIOUS LIVING



Images in this brochure are an artist's impression and for illustrative purposes only and should not be taken as a like for like representation of the final finish of the development.

CLOPHILL ROAD
MAULDEN BEDFORDSHIRE
MK45 2BZ

Welcome to Maulden Meadows, an exclusive small development of beautifully designed 3, 4 and 5 bedroom homes, thoughtfully created by Hearne Holmes. As a highly regarded independent local developer, Hearne Holmes has built a strong reputation for delivering premium, high-end new homes that blend style, comfort, and modern living. Each home in this collection reflects exceptional craftsmanship, with meticulous attention to detail, high-quality materials, and contemporary interiors designed to meet the needs of modern homeowners.

 **THE BRONTE**
5 bedroom home

 **THE SHELLEY**
5 bedroom home

 **THE MARLOWE**
4 bedroom home

 **THE PLATH**
3 bedroom home

 **THE AUSTEN**
3 bedroom home

 **THE KEATS**
4 bedroom home

 **THE BYRON**
Affordable home

 **THE WOOLF**
Affordable home



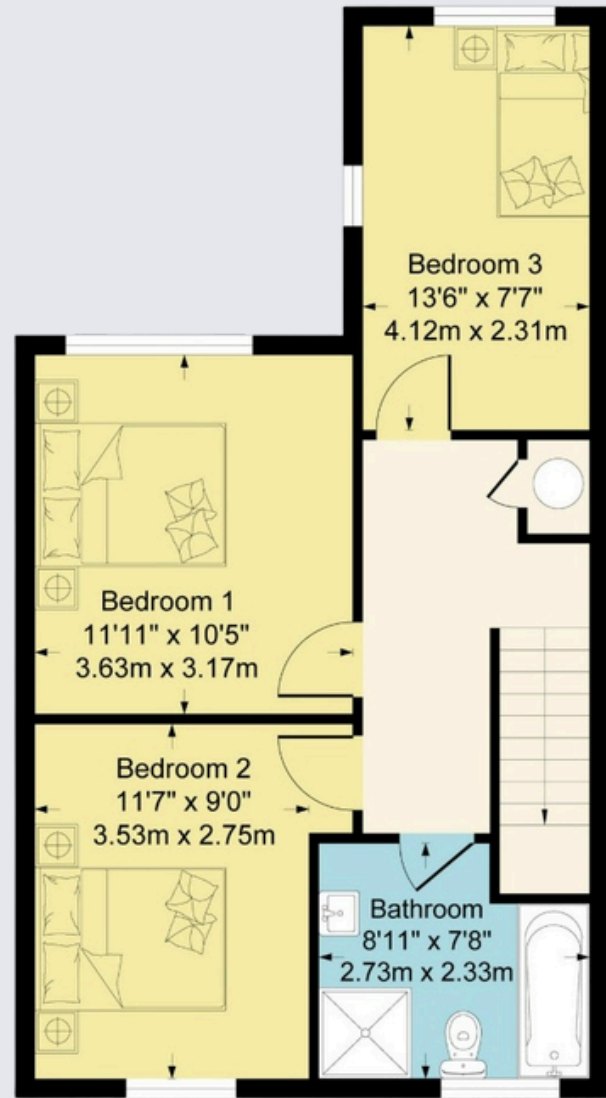
This image is an artist's impression and for illustrative purposes only. It should not be taken as a like for like representation of the final finish of the development.





GROUND FLOOR

Kitchen/Dining	5570 x 3060mm	18' 3" x 10' 0"
Livingroom	4450 x 4100mm max	14' 7" x 13' 5" max



FIRST FLOOR

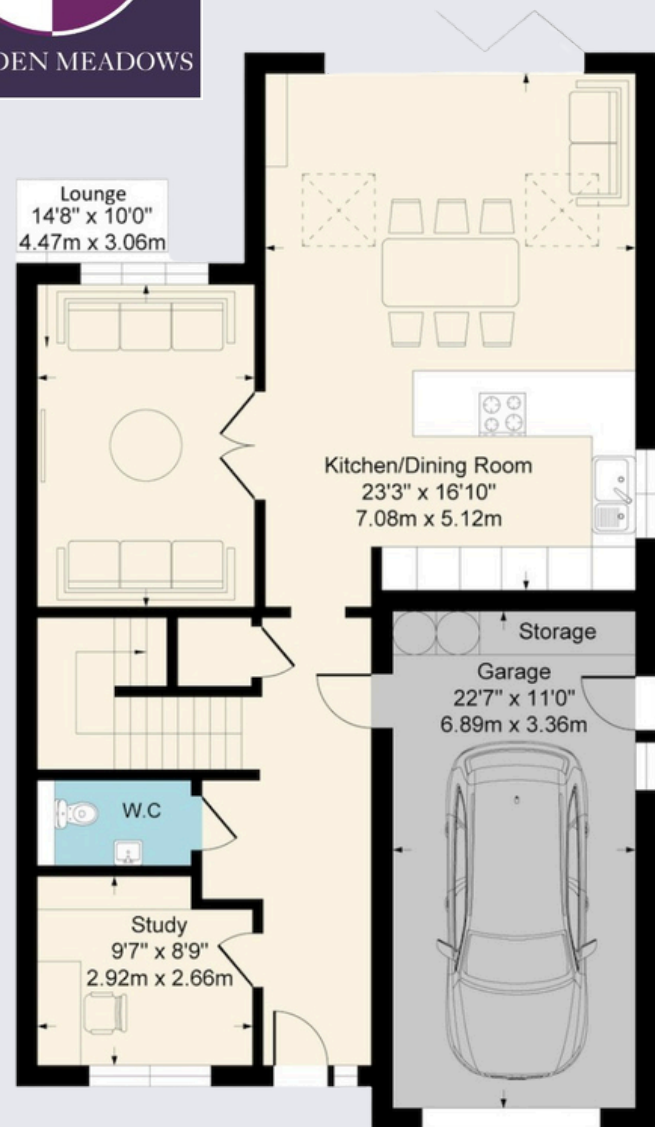
Bedroom 1	3630 x 3170mm max	11' 11" x 10' 5"
Bedroom 2	3530 x 2750mm	11' 7" x 9' 0"
Bedroom 3	4120 x 2310mm	13' 6" x 7' 7"



THE PLATH

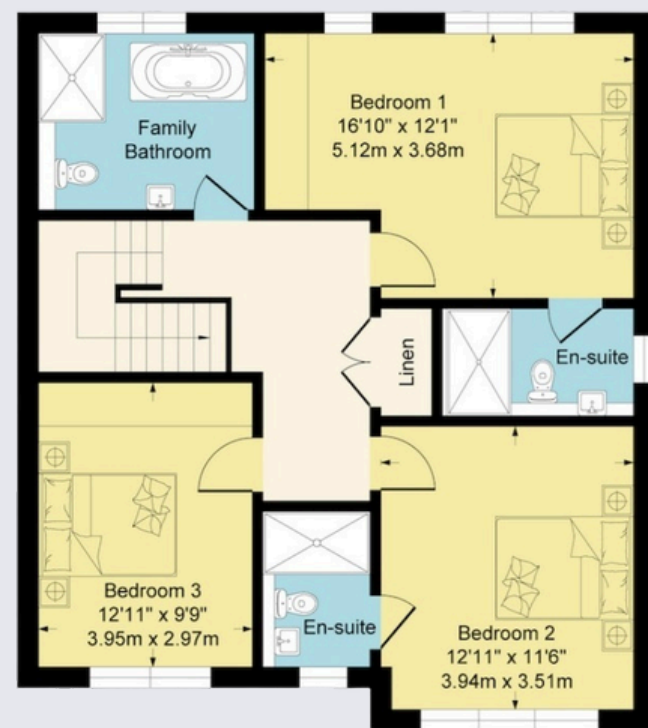
3 bedroom home

- Generous kitchen/diner
- Utility
- Off road parking



GROUND FLOOR

Kitchen/Dining	7080 x 5120mm max	23' 3" x 16' 10" max
Livingroom	4470 x 3060mm	14' 8" x 10' 0"
Study	2920 x 2660mm max	9' 7" x 8' 9" max



FIRST FLOOR

Bedroom 1	5120 x 3680mm max	16' 10" x 12' 1"
Bedroom 2	3940 x 3510mm	12' 11" x 11' 6"
Bedroom 3	3950 x 2970mm	12' 11" x 9' 9"



THE AUSTEN

3 bedroom detached home

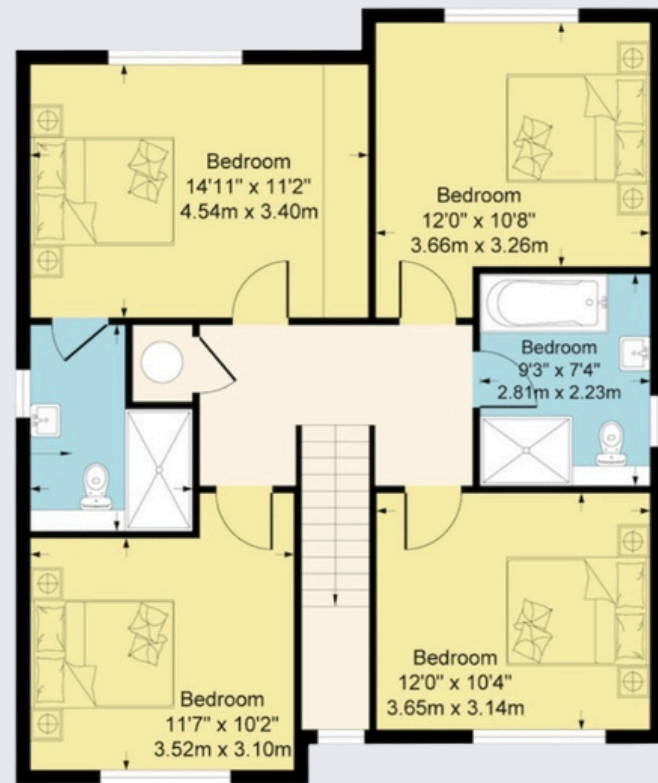
- Generous open plan living/kitchen
- Garage access from hallway
- Study
- Garage
- 3 double bedrooms
- 2 en-suites

These images is an artists' impression and for illustration purposes only. It should not be seen as a like for like representation of the final development. Dimensions are approximate and subject to change. Please speak to our sales representative to review the drawings.



GROUND FLOOR

Kitchen/Dining	8270mm x 4760mm max	27' 2" x 15' 7" max
Lounge	5100mm x 3520mm	16' 9" x 11' 7"
Study	2230mm x 1840mm	7' 4" x 6' 0"



FIRST FLOOR

Bedroom 1	4540mm x 3400mm	14' 11" x 11' 2"
Bedroom 2	3660mm x 3260mm max	12' 0" x 10' 8" max
Bedroom 3	3520mm x 3100mm max	11' 7" x 10' 2" max
Bedroom 4	3650mm x 3140mm	12' 0" x 10' 4"

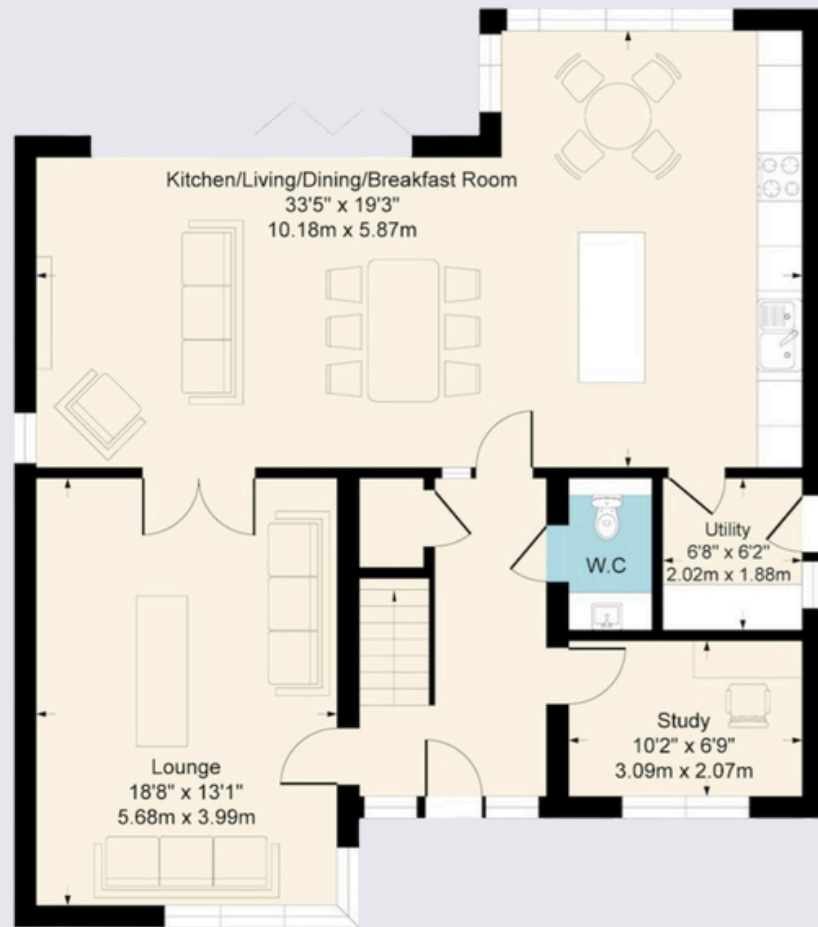


THE KEATS

4 bedroom detached home

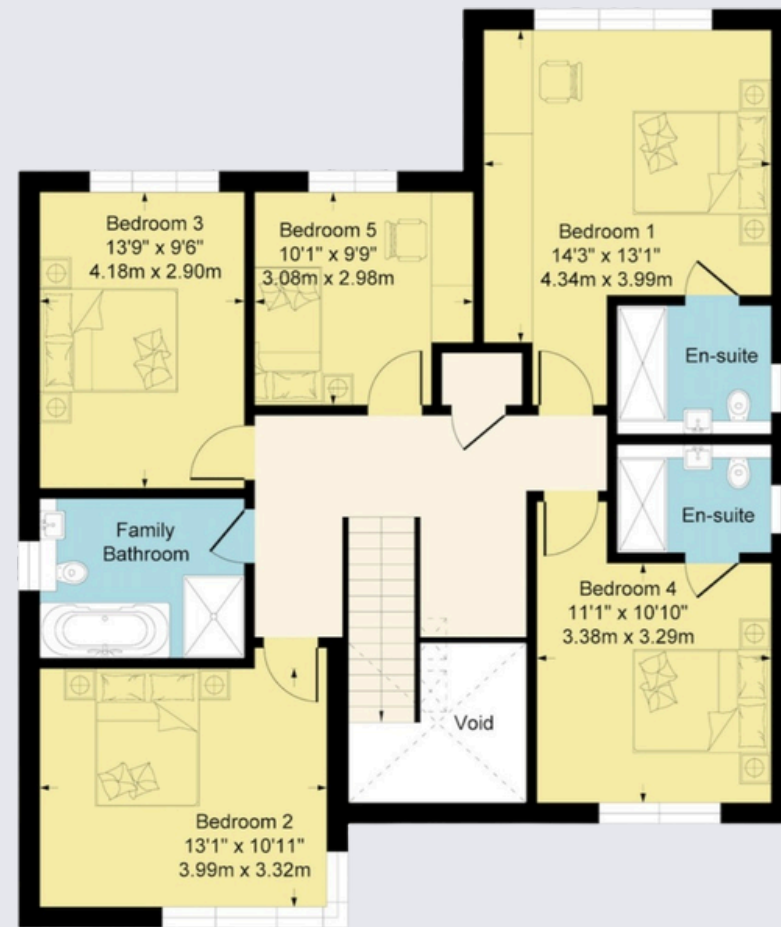
- Generous kitchen/diner
- Study
- Garage
- 4 double bedrooms
- EV Charger

These images are an artist's impression and for illustration purposes only. It should not be seen as a like-for-like representation of the final development. Dimensions are approximate and subject to change. Please speak to our sales representative to review the drawings.



GROUND FLOOR

Kitchen/Dining	1018mm x 5870mm max	23' 5" x 19' 3" max
Lounge	5680mm x 3990mm	118' 8" x 13' 1"
Study	3090mm x 2070mm	10' 2" x 6' 9"



FIRST FLOOR

Bedroom 1	4340mm x 3990mm max	14' 3" x 13' 1" max
Bedroom 2	3990mm x 3320mm max	13' 1" x 10' 11" max
Bedroom 3	4180mm x 2900mm	13' 9" x 9' 6"
Bedroom 4	3380mm x 3290mm max	11' 1" x 10' 10" max
Bedroom 5	3080mm x 2980mm max	10' 1" x 9' 9" max

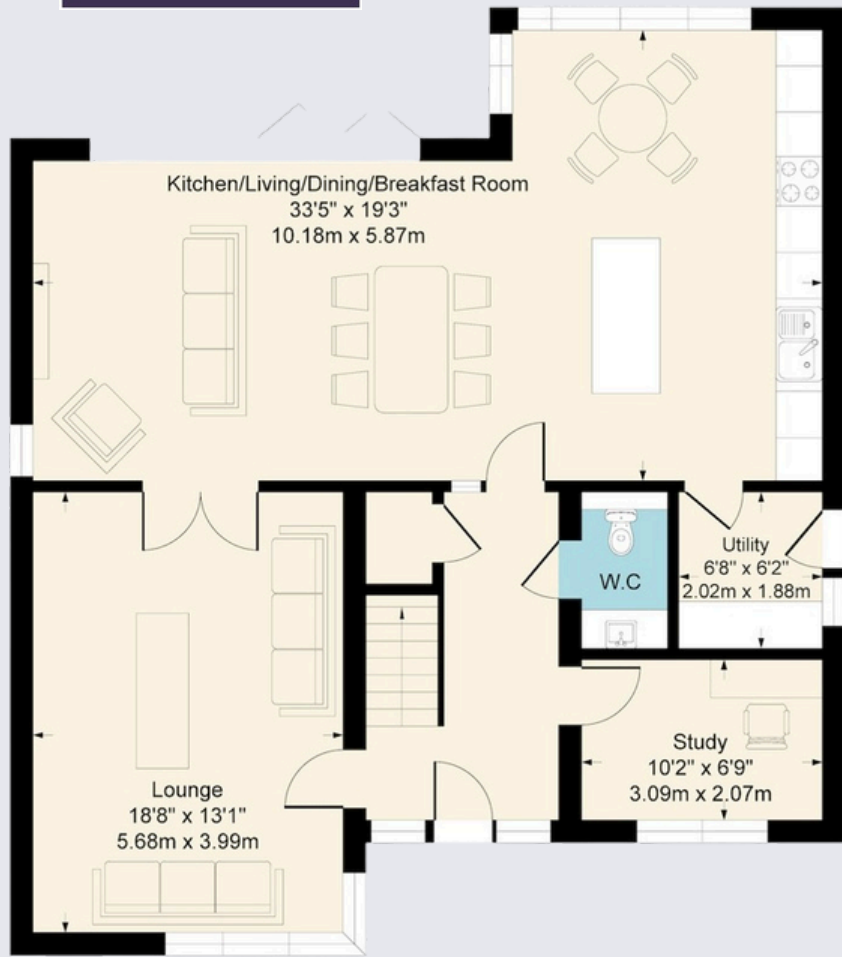


THE BRONTE

5 bedroom detached home

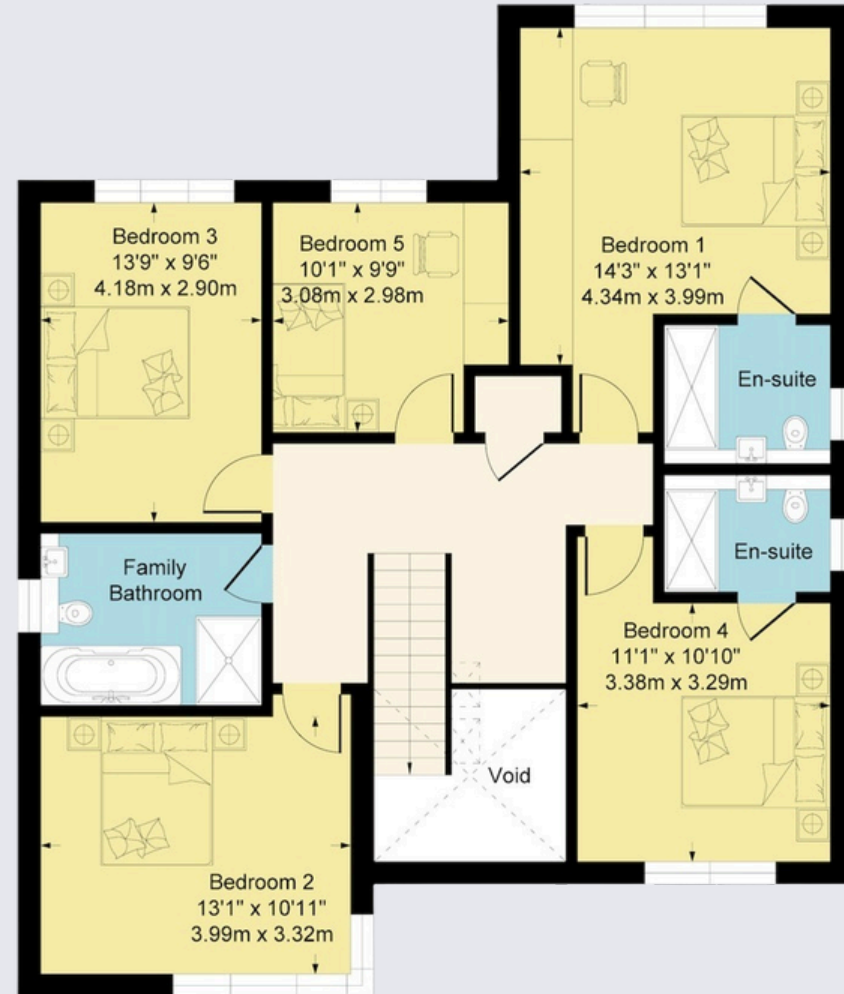
- Generous open plan living/kitchen
- Utility
- Study
- Double garage
- 2 en-suites

These images are an artist's impression and for illustration purposes only. It should not be seen as a like for like representation of the final development. Dimensions are approximate and subject to change. Please speak to our sales representative to review the drawings.



GROUND FLOOR

Kitchen/Dining/Living	1018mm x 5870mm max	33' 5" x 19' 3" max
Lounge	5680mm x 3990mm	18' 8" x 13' 1"
Study	3090mm x 2070mm max	10' 2" x 6' 9" max



FIRST FLOOR

Bedroom 1	4340mm x 3990mm max	14' 3" x 13' 1" max
Bedroom 2	3990mm x 3320mm max	13' 1" x 10' 11" max
Bedroom 3	4180mm x 2900mm	13' 9" x 9' 6"
Bedroom 4	3380mm x 3290mm max	11' 1" x 10' 10" max
Bedroom 5	3080mm x 2980mm max	10' 1" x 9' 9" max



THE SHELLEY

5 bedroom detached home

- Generous open plan living/kitchen
- Utility
- Study
- Double garage
- 2 en-suites
- EV charger

These images are an artist's impression and for illustration purposes only. It should not be seen as a like for like representation of the final development. Dimensions are approximate and subject to change. Please speak to our sales representative to review the drawings.



A BRAND YOU CAN TRUST

Hearne Holmes are an award winning and innovative new homes builder based in Milton Keynes and operating throughout the counties of Bedfordshire, Cambridgeshire and Hertfordshire.

The company is recognised and respected for its architectural excellence, project execution and premium build quality; building individually designed new homes that enhance the community and provide the ideal space for today's modern living lifestyles.

With a compelling track record for design and build quality, Hearne Holmes Developments have been independently acknowledged with the receipt of a number of awards from prominent professional bodies and institutions.

Hearne Holmes build houses and create homes.

Our homes come with

- A 10 year LABC Buildmark warranty.
- Homes built to the newest building regulations
- In house customer service for the first two years after legal completion

CONSUMER
CODE FOR
HOME BUILDERS
www.consumercode.co.uk



30 Mill St
Bedford
MK40 3HD

Phone: 0845 0945 007
Email: sales@hearneholmes.co.uk

