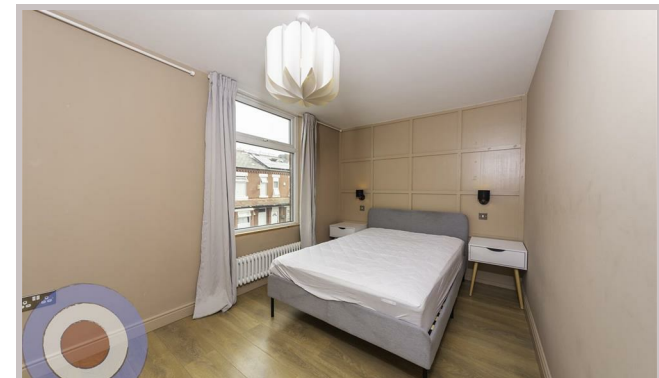
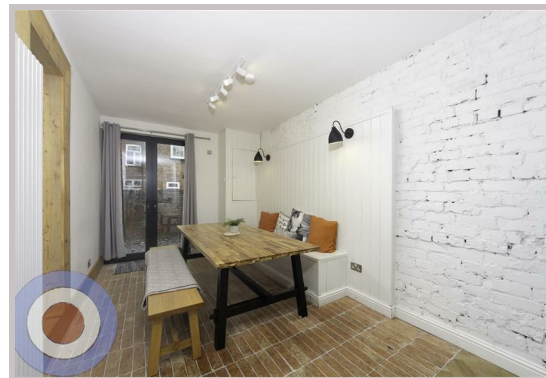




32 Ruskin Avenue  
Manchester  
M14 4DP



# 32 Ruskin Avenue

## £736 Per month

STUDENT PROPERTY AVAILABLE ON 01/07/26

This stunning 6-bedroom, 3-storey house is perfectly located in Whitworth Park, just a short walk from the university. Full of original features and individually styled bedrooms, all six bedrooms are generous doubles, ideal for student living.

The open-plan kitchen-diner features a hand-painted Farrow & Ball kitchen and terracotta brick-tiled flooring, flowing seamlessly onto a private courtyard garden – perfect for relaxing or socialising.

No deposit required and communal cleaning included can be added during your tenancy.

£170 pppw  
£736 pppcm

- NO DEPOSIT
- ALL BILLS INCLUDED
- COMMUNAL CLEANING INCLUDED
- ALL DOUBLE BEDROOMS
- ENERGY EFFICIENT HOUSE C OR ABOVE
- LOCATED IN WHITWORTH PARK

Local Authority  
Manchester

Council Tax Band Exempt

EPC Rating C

Contact

01613992619

hello@welcometomanchesterlettings.com

www.welcometomanchesterlettings.com

