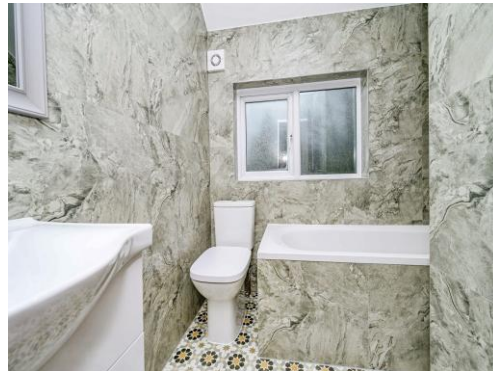




Connells

North Western Avenue
WATFORD



Property Description

This super two-bedroom home is situated in the highly sought-after location of North Western Avenue. Ideal for family living, the property boasts a modern decorative finish, featuring a bright, well-equipped kitchen, lounge with bay window and conservatory to rear, upstairs you'll find two generous bedrooms, and the family bathroom. The home is conveniently located near Cherry Tree and Beechfields schools, with easy access to the M1 and M25 motorways. Additionally, Asda and Sainsbury's superstores are within close proximity. We highly recommend scheduling a viewing to fully appreciate what this home has to offer!

Entrance Hall

Front door.

Living Room

14' 5" x 11' 6" (4.39m x 3.51m)
Bay window to front.

Kitchen

14' 5" x 9' 6" (4.39m x 2.90m)
Fitted kitchen with built in wall and base units, breakfast bar, sink with drainer, cooker point.

Conservatory

9' 2" x 8' 4" (2.79m x 2.54m)
Door to side.

Lean To

Access from front of house to rear.

First Floor

Bedroom 1

14' 9" x 11' 2" (4.50m x 3.40m)
Bay window to front,

Bedroom 2

9' 10" x 6' 11" (3.00m x 2.11m)

Bathroom

Bath, WC.

Outside

Rear Garden

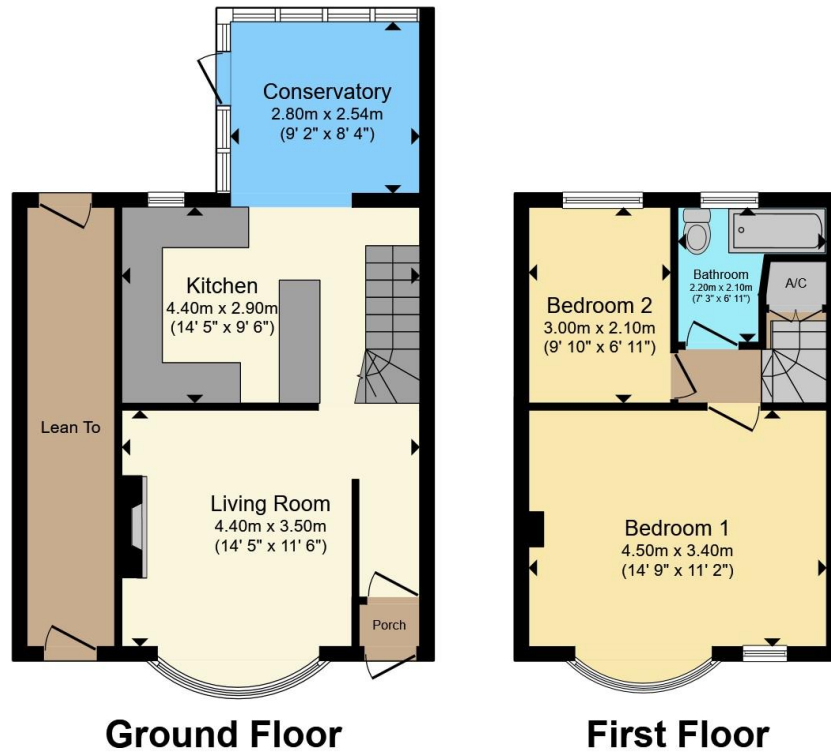
Front Garden

Paved area with path.









Total floor area 75.9 m² (817 sq.ft.) approx

This floor plan is for illustrative purposes only. It is not drawn to scale. Any measurements, floor areas (including any total floor area), openings and orientation are approximate. No details are guaranteed, they cannot be relied upon for any purpose and they do not form part of any agreement. No liability is taken for any error, omission or misstatement. A party must rely upon its own inspection(s). Powered by www.propertybox.io



To view this property please contact Connells on

T 01923 674504
E leavesden@connells.co.uk

1 Cunningham Way Leavesden
 Abbots Langley WD25 7NG

EPC Rating: D Council Tax
 Band: C

Tenure: Freehold

view this property online connells.co.uk/Property/LEA103632



1. MONEY LAUNDERING REGULATIONS Intending purchasers will be asked to produce identification documentation at a later stage and we would ask for your co-operation in order that there will be no delay in agreeing the sale. 2. These particulars do not constitute part or all of an offer or contract. 3. The measurements indicated are supplied for guidance only and as such must be considered incorrect. Potential buyers are advised to recheck measurements before committing to any expense. 4. We have not tested any apparatus, equipment, fixtures, fittings or services and it is in the buyers interest to check the working condition of any appliances.

Connells Residential is registered in England and Wales under company number 1489613, Registered Office is Cumbria House, 16-20 Hockliffe Street, Leighton Buzzard, Bedfordshire, LU7 1GN. VAT Registration Number is 500 2481 05.

See all our properties at www.connells.co.uk | www.rightmove.co.uk | www.zoopla.co.uk

Property Ref: LEA103632 - 0005