



9 Millbank Quarter, London, SW1P

£6,000 pcm

- Rare opportunity
- 4th floor
- 2 bedrooms
- 2 bathrooms
- Spacious living space
- 945 sq ft
- Modern integrated kitchen appliances.
- Private courtyard garden
- Prestigious location,
- Luxury residents' facilities
- 24 hour concierge
- Great transport links

Beautifully designed 4th floor apartment in the prestigious 9 Millbank on the banks of the River Thames. Available now!!

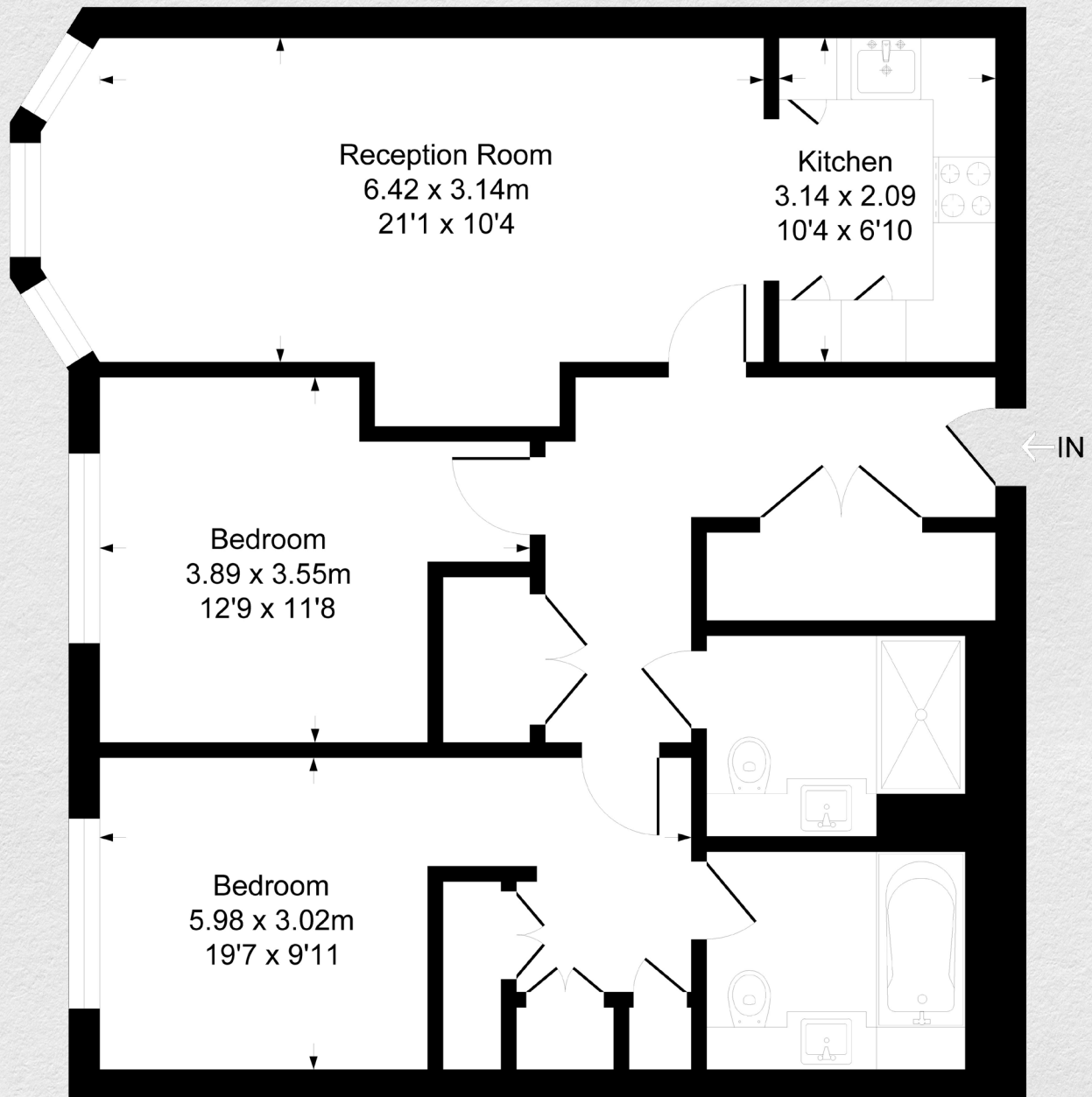
This stunning 945 square foot property features 2 bedrooms and 2 bathrooms. The en-suite master bedroom includes spacious fitted wardrobes offering ample space for comfortable living. Floor to ceiling windows allows natural light to create a bright and fresh open plan living space. The modern kitchen is finished to a high standard with high spec integrated appliances.

For residents' comfort, all properties in 9 Millbank have underfloor heating throughout, and comfort cooling to all reception rooms and bedrooms.

Enjoy the ultimate in relaxation with access to luxurious leisure facilities, including a gymnasium and swimming pool. The apartment also boasts a private courtyard garden, providing a tranquil outdoor space. Benefit from a 24/7 concierge service, ensuring convenience and security.

Millbank is fantastically located near to the theatres of the West End, amenities of Knightsbridge, and wonderful local restaurants. There are excellent educational institutions nearby as well as the transport links of Westminster, Victoria, St James Park and Pimlico Underground and National Rail Stations.





Address:

9 Millbank, London, SW1P

sq ft

945

bed

2

bath

2

*** For illustration purposes only. Could not be to scale. One-London aims to ensure accuracy but is not liable for any discrepancies.*