



Connells

Pearse Grove
Walton Park MILTON KEYNES



Property Description

Nestled in the sought after Walton Park area of Milton Keynes, this extended four bedroom family home offers a perfect blend of space, style and functionality. As you step in you find a warm and inviting atmosphere, kitchen that seamlessly flows into the dining area, a well sized living room with access into the study perfect for working from home. As you head upstairs you find four well proportioned bedrooms with the principal having the added benefit of an ensuite, family bathroom. Outside a double garage provides secure parking and additional storage, the well kept garden offers a wonderful space for relaxation and gardening. This home is an ideal choice for those seeking a comfortable and convenient lifestyle in a desirable location. Viewing is highly recommended.

Entrance Hall

The entrance hall offers a practical layout and benefits from a useful storage cupboard and a radiator, providing both convenience and comfort.

Cloakroom

The cloakroom is fitted with a WC and wash hand basin, complemented by an extractor fan for ventilation, providing a convenient ground-floor facility.

Study

The study benefits from good natural daylight and features a door providing direct access to the garden, making it a versatile space ideal for home working or a quiet retreat.

Lounge

A spacious lounge featuring a double-glazed window allowing plenty of natural light, a radiator for comfort, and an electric fireplace that provides an attractive focal point to the room.

Reception Room Three

This bright and versatile room benefits from a skylight providing excellent natural light, two radiators for added comfort, and a door offering direct access to the garden, making it an ideal space for dining, a family room, or flexible living use.

Kitchen

The kitchen is well equipped with a range of fitted wall and base units providing ample storage. Integrated appliances include a double electric oven, electric hob with extractor hood, and a stainless-steel sink. Additional features include spotlights, a housed boiler, and a double-glazed window allowing natural light into the space, creating a practical and modern kitchen environment.

Landing

The landing provides additional storage via a built-in cupboard and benefits from a loft hatch, offering access to loft space for further storage.

Bedroom One

The room benefits from a double-glazed window providing natural light, a radiator for comfort, and fitted wardrobe and cabinet space offering practical storage solutions.

En-Suite

The en-suite is fitted with a shower, low-level WC, and wash hand basin, and benefits from a double-glazed window providing natural light. Additional features include a chrome

heated towel rail radiator, creating a bright, practical, and well-appointed private bathroom space.

Bedroom Two

Bedroom two benefits from a double-glazed window allowing natural light into the room and is fitted with a radiator, providing a comfortable and practical space suitable for a bedroom or home office.

Bedroom Three

The room benefits from a double-glazed window providing natural light and is fitted with a radiator, offering a comfortable and practical space suitable for a bedroom or alternative use.

Bedroom Four

Bedroom four benefits from a double-glazed window allowing natural light into the room and features a radiator, offering a comfortable and practical space suitable for a bedroom, study, or additional guest accommodation.

Bathroom

The bathroom is fitted with a three-piece suite comprising a wash hand basin, low-level WC, and a bath with shower over. Additional features include a chrome heated towel rail radiator and a double-glazed window, providing natural light and ventilation.

Rear Garden

The rear garden is a well-established outdoor space arranged over multiple lawned tiers and benefits from a paved patio area, ideal for seating and outdoor entertaining. Further features include a pond, adding character to the garden, and a workshop providing useful storage or hobby space.

Outbuilding

The property further benefits from a substantial outbuilding comprising a double garage, providing excellent space for secure parking, storage, or workshop use.

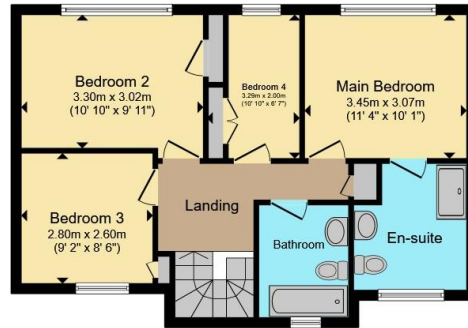
Special Features

The property further benefits from installed solar panels & an EV charging point on the drive.

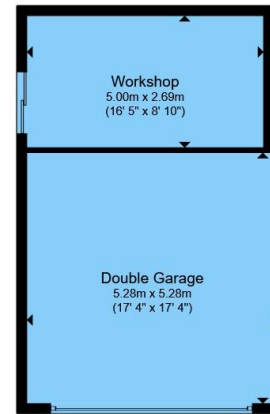




Ground Floor



First Floor



Outbuilding



Total floor area 178.5 m² (1,921 sq.ft.) approx

This floor plan is for illustrative purposes only. It is not drawn to scale. Any measurements, floor areas (including any total floor area), openings and orientation are approximate. No details are guaranteed, they cannot be relied upon for any purpose and they do not form part of any agreement. No liability is taken for any error, omission or misstatement. A party must rely upon its own inspection(s). Powered by www.propertybox.io



To view this property please contact Connells on

T 01908 691606

E walnuttree@connells.co.uk

26A Fyfield Barrow The Walnut Tree Local Centre Walnut Tree

EPC Rating: C Council Tax Band: E

view this property online connells.co.uk/Property/WNT308171

Tenure: Freehold



1. MONEY LAUNDERING REGULATIONS Intending purchasers will be asked to produce identification documentation at a later stage and we would ask for your co-operation in order that there will be no delay in agreeing the sale. 2. These particulars do not constitute part or all of an offer or contract. 3. The measurements indicated are supplied for guidance only and as such must be considered incorrect. Potential buyers are advised to recheck measurements before committing to any expense. 4. We have not tested any apparatus, equipment, fixtures, fittings or services and it is in the buyers interest to check the working condition of any appliances.

Connells Residential is registered in England and Wales under company number 1489613, Registered Office is Cumbria House, 16-20 Hockliffe Street, Leighton Buzzard, Bedfordshire, LU7 1GN. VAT Registration Number is 500 2481 05.

See all our properties at www.connells.co.uk | www.rightmove.co.uk | www.zoopla.co.uk

Property Ref: WNT308171 - 0007