



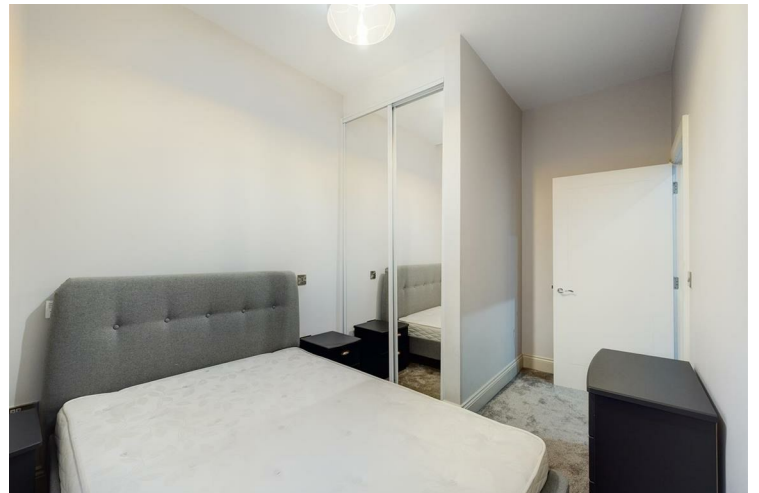
19A The Levels, 22 Water street Liverpool

£160,000
Leasehold

Welcome to this charming one-bedroom apartment located at 22 Water Street, Liverpool. Nestled on the iconic Strand Street, this property offers a unique blend of modern living and vibrant city life. The apartment features a spacious living area that is perfect for relaxation and entertaining, seamlessly connecting to an open-plan kitchen that is both functional and stylish.

The generously sized bedroom provides a comfortable retreat, while the well-appointed bathroom ensures convenience and privacy. With its prime location, you are just a couple of minutes' walk from the picturesque River Mersey, allowing you to enjoy scenic views and leisurely strolls along the waterfront.

This apartment is ideally situated within close walking distance to Liverpool city centre, where you will find an array of local bars, restaurants, and various amenities to cater to your lifestyle needs. Whether you are a first-time buyer or looking for a rental opportunity, this property presents an excellent choice for those seeking to immerse themselves in the vibrant culture of Liverpool.



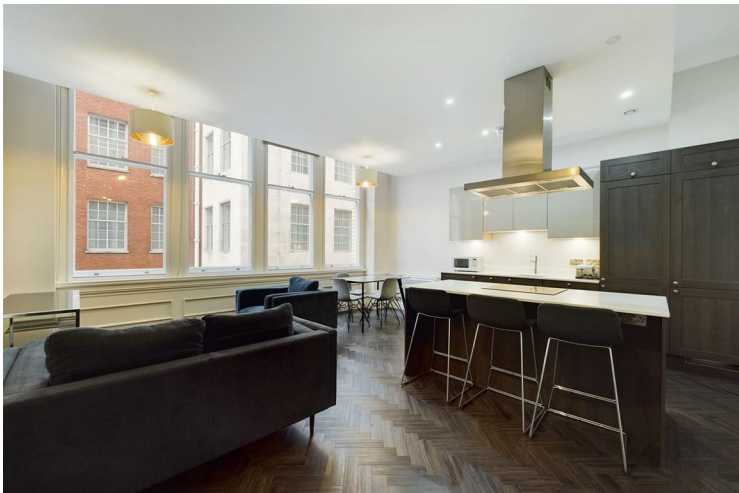
• ONE BEDROOM APARTMENT • OPEN PLAN KITCHEN AND LIVING AREA • SPACEIOUS
LUXURIOUS CITY CENTER APARTMENT

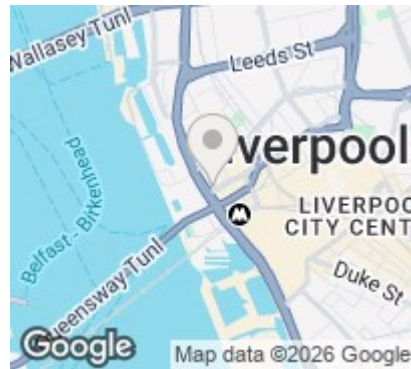
Header

The information and images provided in this property advertisement are intended for guidance purposes only. While we make every effort to ensure the accuracy of the details, we strongly recommend that interested parties view the property in person to confirm the property's condition and suitability for their specific requirements. The photographs used in this advertisement may have been digitally enhanced and may not accurately represent the current condition of the property. Any measurements or distances provided are approximate and should not be relied upon for any purpose. Furthermore, the description and details provided are based on the landlord's understanding and may be subject to change without notice. Prospective tenants are advised to verify any specific details that are important to them before entering into any agreement. We do not accept any liability for any loss or damage, whether direct or indirect, arising from reliance upon the information provided in this advertisement. We strongly advise all parties to seek professional advice and conduct their own due diligence before making any decisions or commitments related to this property. By viewing this advertisement, you agree to the above disclaimer and acknowledge that any reliance on the information provided is at your own risk. Please note that this disclaimer is subject to change and may be updated without prior notice



• STUNNING VIEWS • 764 SQUARE FEET LIVING SPACE • 24HR CONCIERGE





| Energy Efficiency Rating | | |
|---|-------------------------|-----------|
| | Current | Potential |
| Very energy efficient - lower running costs | | |
| (92 plus) A | | |
| (81-91) B | | |
| (69-80) C | | |
| (55-68) D | 55 | 55 |
| (39-54) E | | |
| (21-38) F | | |
| (1-20) G | | |
| Not energy efficient - higher running costs | | |
| England & Wales | EU Directive 2002/91/EC | |

Agents Note: Whilst every care has been taken to prepare these particulars, they are for guidance purposes only. All measurements are approximate and are for general guidance purposes only and whilst every care has been taken to ensure their accuracy, they should not be relied upon and potential buyers/tenants are advised to recheck the measurements

Pall Mall Liverpool Mistoria
22 Pall Mall
Liverpool
L3 6AL

0151 282 1539
info@mistoria.co.uk
mistoria.co.uk

