



Connells

Heath Park Cottage Heath Road
Leighton Buzzard

Heath Park Cottage Heath Road Leighton Buzzard LU7 3AX

for sale offers in excess of
£280,000



Property Description

Situated on the highly regarded Heath Road, this exceptional two-bedroom end of terrace period home has been comprehensively renovated to an impressive standard, seamlessly blending character features with modern living.

The ground floor offers two well-proportioned reception rooms, providing flexible living and dining space, ideal for both everyday living and entertaining. To the rear, the property benefits from a refitted modern kitchen, thoughtfully designed with quality fittings and finishes. A stylishly refitted cloakroom completes the ground floor accommodation.

Upstairs, the property boasts two generous double bedrooms, both beautifully presented, along with a refitted contemporary bathroom finished to a high specification.

The renovation has been extensive and includes a new roof, full rewiring, and complete replumbing, offering peace of mind to the next owner. Externally, the home features a low-maintenance rear garden, perfect for those seeking outdoor space

without the upkeep.

Ideally located within close proximity to Leighton Buzzard town centre, highly regarded schools, and local amenities, this turnkey period home would suit first-time buyers, professionals, or downsizers alike. An internal viewing is highly recommended to fully appreciate the quality and location on offer.

Lounge

Double glazed window. Front door into. Radiator. Laminate flooring.

Cloakroom

WC Wash hand basin. Tiled walls.

Dining Room

Double glazed window. Radiator. Laminate flooring.

Kitchen

2 double glazed windows. Door to rear garden. Integrated microwave. Integrated oven. Integrated hob with cooker hood over. Integrated dishwasher. Integrated washing machine. Integrated fridge freezer. 1 bowl stainless steel sink and drainer. Laminate flooring.

Landing

Carpeted flooring.

Bedroom One

Double glazed window. Radiator. Carpeted flooring.

Bedroom Two

Double glazed window. Radiator. Carpeted flooring.

Bathroom

Double glazed window. Bath with shower over. WC. Wash hand basin in vanity unit. Tiled walls. Tiled flooring.

Outside

Front Garden

Pathway to front door. Brick wall to borders.

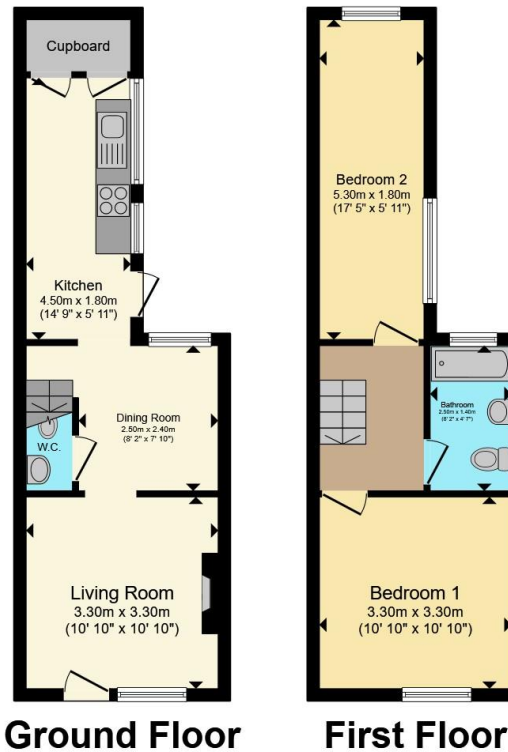
Rear Garden

Wooden panelled fencing to borders. Block paved. Patio area.









Total floor area 59.1 m² (636 sq.ft.) approx

This floor plan is for illustrative purposes only. It is not drawn to scale. Any measurements, floor areas (including any total floor area), openings and orientation are approximate. No details are guaranteed, they cannot be relied upon for any purpose and they do not form part of any agreement. No liability is taken for any error, omission or misstatement. A party must rely upon its own inspection(s). Powered by www.propertybox.io



To view this property please contact Connells on

T 01525 372 588
E leightonbuzzard@connells.co.uk

4 Market Square
 LEIGHTON BUZZARD LU7 1HA

EPC Rating: D Council Tax
 Band: C

Tenure: Freehold

view this property online connells.co.uk/Property/LBC311462



1. MONEY LAUNDERING REGULATIONS Intending purchasers will be asked to produce identification documentation at a later stage and we would ask for your co-operation in order that there will be no delay in agreeing the sale. 2. These particulars do not constitute part or all of an offer or contract. 3. The measurements indicated are supplied for guidance only and as such must be considered incorrect. Potential buyers are advised to recheck measurements before committing to any expense. 4. We have not tested any apparatus, equipment, fixtures, fittings or services and it is in the buyers interest to check the working condition of any appliances.

Connells Residential is registered in England and Wales under company number 1489613, Registered Office is Cumbria House, 16-20 Hockliffe Street, Leighton Buzzard, Bedfordshire, LU7 1GN. VAT Registration Number is 500 2481 05.

See all our properties at www.connells.co.uk | www.rightmove.co.uk | www.zoopla.co.uk

Property Ref: LBC311462 - 0003