



**Mayfield Avenue, Grove**

Wantage

**Simpsons**

The Proactive Agent

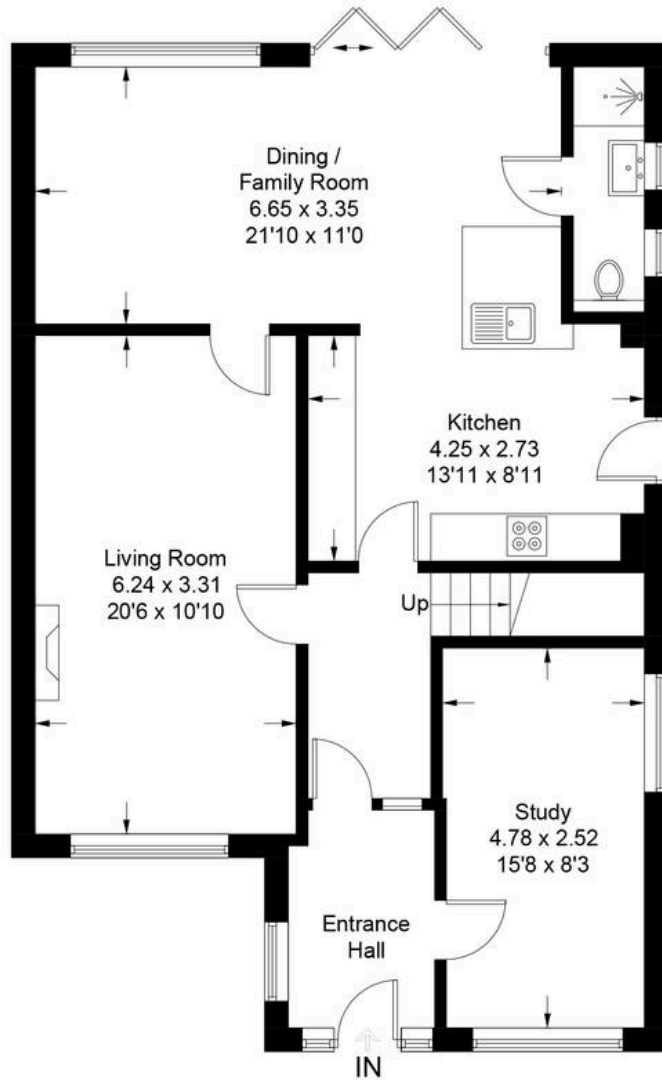
Guide Price **£440,000**

# Mayfield Avenue - Grove

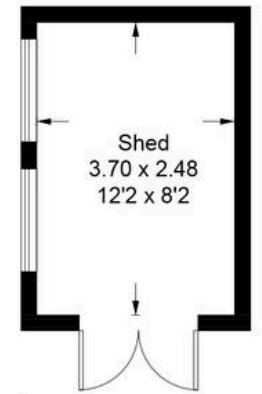
Approximate Gross Internal Area = 135.1 sq m / 1454 sq ft

Shed = 9.2 sq m / 99 sq ft

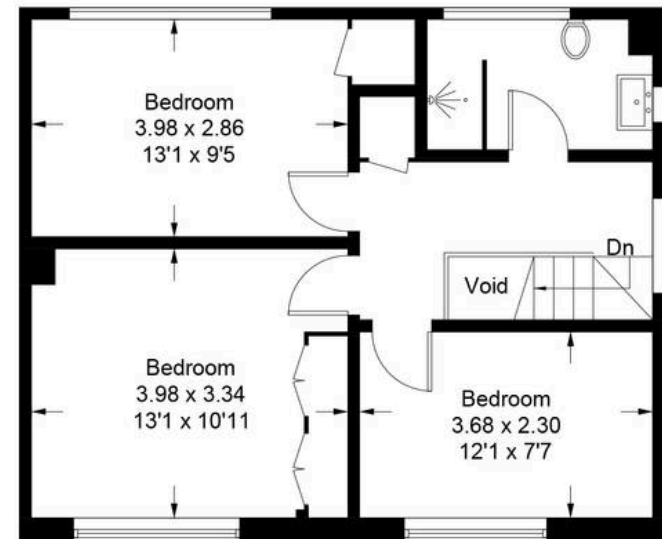
Total = 144.3 sq m / 1552 sq ft (Excluding Void)



**Ground Floor**



(Not Shown In Actual Location / Orientation)



**First Floor**

# 20 Mayfield Avenue

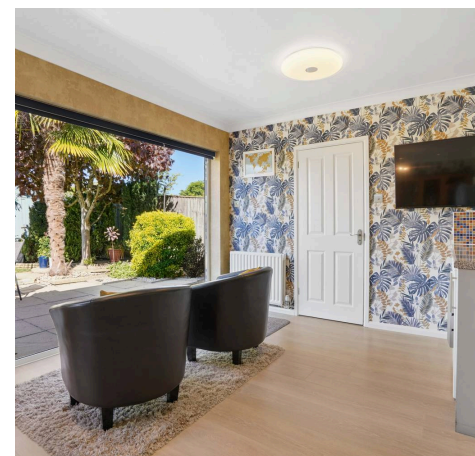
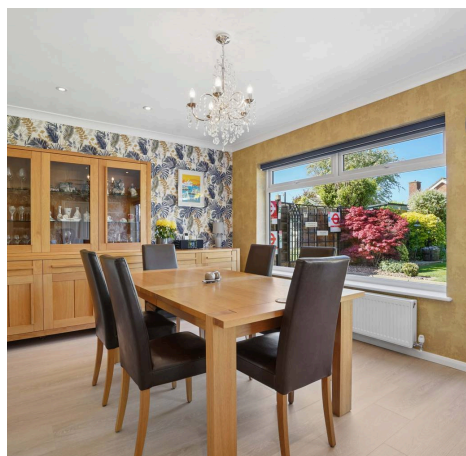
Grove, Wantage

This immaculately presented, extended three-bedroom detached house is situated within the established and highly sought-after estate of 'Old Grove'.

Council Tax band: E

Tenure: Freehold

- Onward Chain Secured For A Targeted September Move
- Located in an Established & Popular Estate within 'Old Grove'
- Open-Plan Kitchen Diner With Bi-Fold Doors to the Sunny Garden
- Extended & Spacious Three Bedroom Detached, Immaculately Presented Throughout



SCAN THE  
QR CODE  
TO BOOK  
YOUR VIEWING



