



52 Millfield New Ash Green

- Delightful Three Bedroom Mid Terrace House
- Fitted Kitchen
- Bright & Airy Lounge/Diner
- Downstairs Cloakroom
- Gas Central Heating
- Double Glazing
- South Facing Rear Garden
- Garage

£335,000





A delightful mid terrace three bedroom house offering excellent living accommodation. The property boasts gas central heating, double glazing, south facing rear garden and a garage in nearby block.

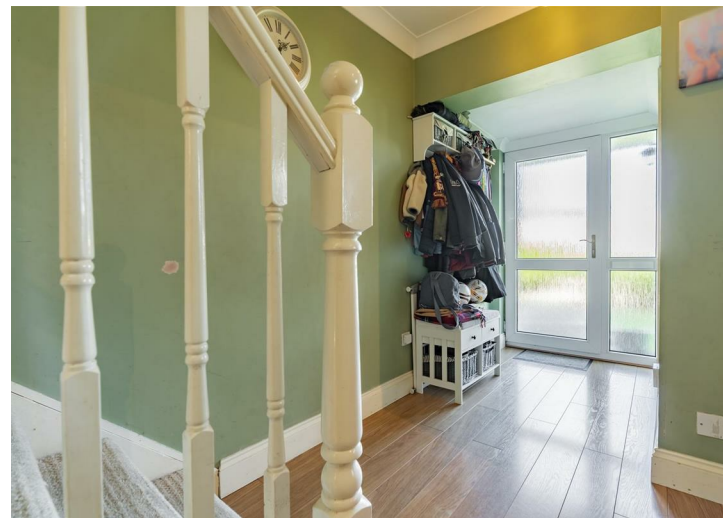
This property offers great accommodation, enter into a good size hallway with staircase ascending, downstairs cloakroom, fitted kitchen to front and to the rear a bright and airy lounge/diner overlooking the south facing rear garden. The property also has a garage in nearby block.

Tenure: Freehold

Council Tax Band: C

Fixtures and fittings by arrangement other than those mentioned.

Residents Society Fees and Village Association Fees apply to properties in New Ash Green, please ask for further information or contact New Ash Green Village Association directly for figures.





Entrance Hallway

Downstairs Cloakroom

Fitted Kitchen
9'1" x 7'11"

Lounge/Diner
18'11" x 15'1"

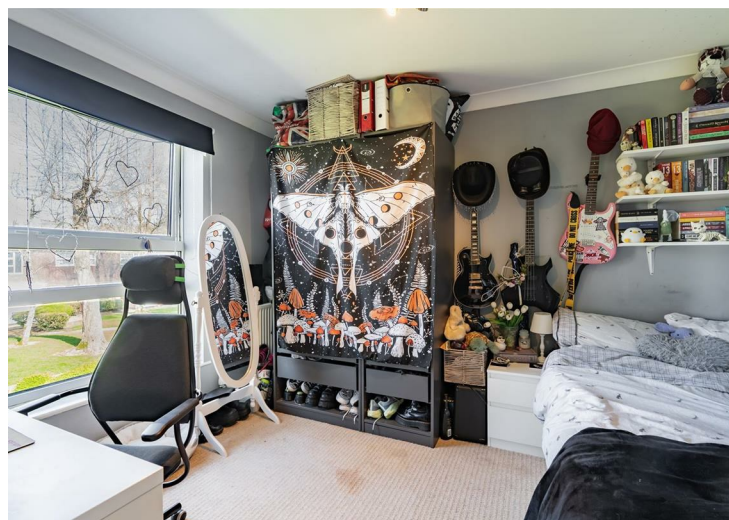
Landing

Bedroom One
14'0" x 9'10"

Bedroom Two
11'1" x 9'

Bedroom Three
8' x 6'

Bathroom

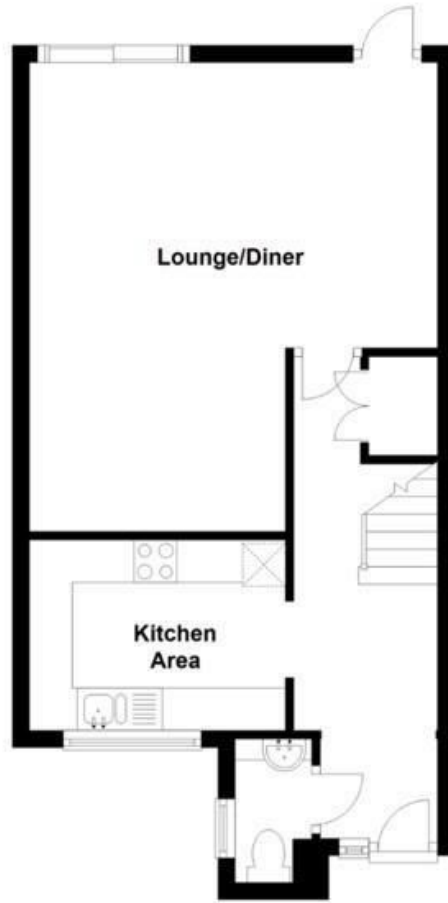






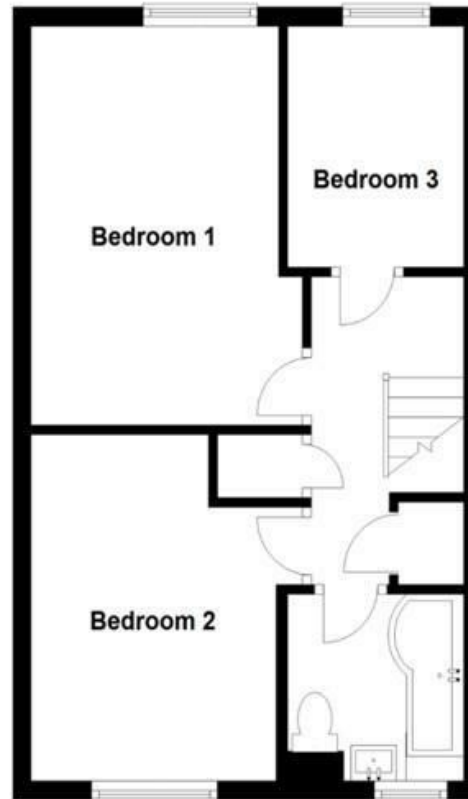
Ground Floor

Approx. 40.9 sq. metres (440.1 sq. feet)



First Floor

Approx. 37.5 sq. metres (403.1 sq. feet)



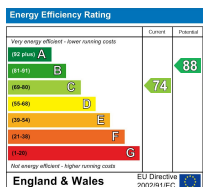
Open: Monday-Friday 9am-5.30pm
Saturday 9am-5pm

**4 The Row, New Ash Green
Kent DA3 8JG**

**1 The Parade, Wrotham Road
Meopham, Kent DA13 0JL**

01474 815811 / 871555

info@hartleyestates.com
www.hartleyestates.com



Appliances and services are untested. Dimensions are approximate and floorplans are not to scale. Fixtures and fittings, planning and alterations, lease details if applicable, should all be verified legally.