



## Bromyard Avenue, W3 £500,000

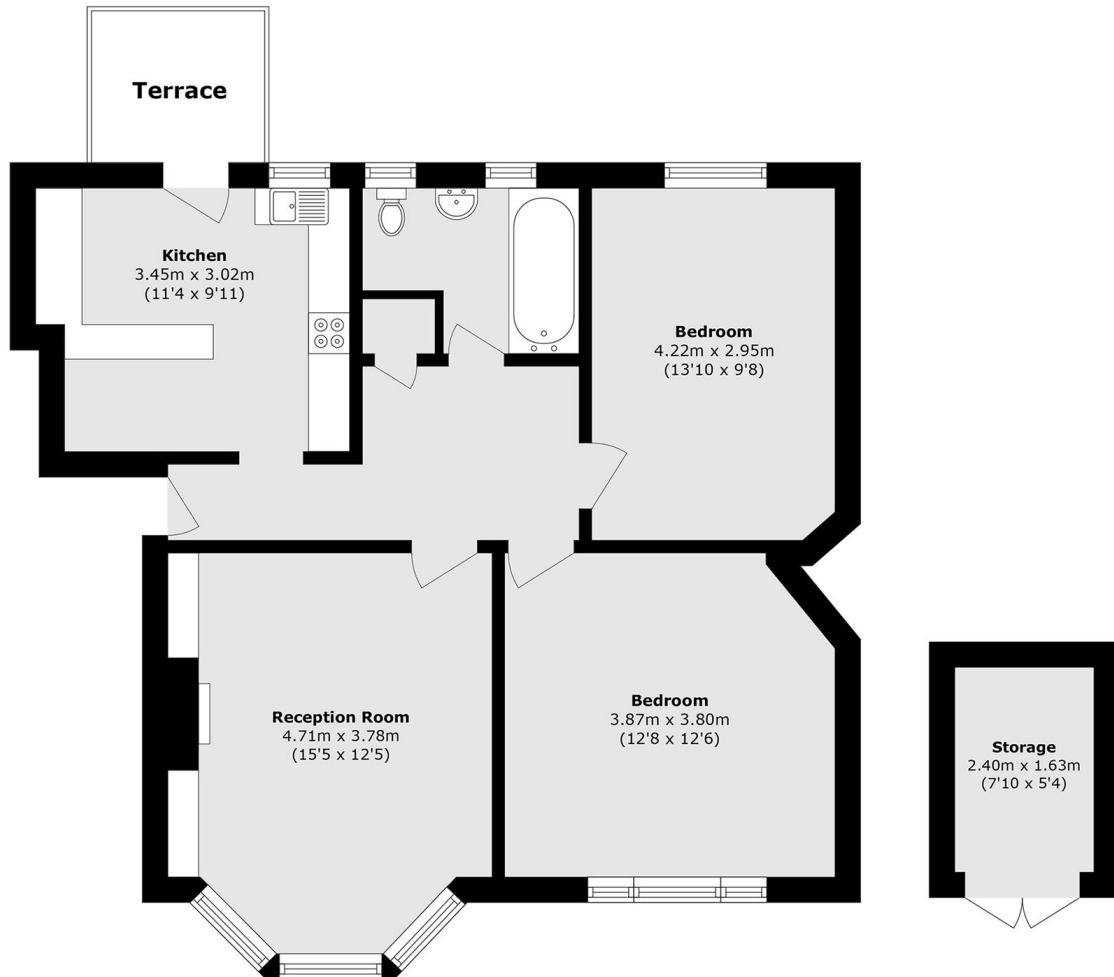
A newly refurbished ground floor apartment situated within an imposing inter-war period building with direct access to private terrace. The flat has just under 800 sq.ft of internal living space with two double bedrooms, a separate kitchen and two off street parking spaces.

Just over half a mile from Acton Central (Overground) and East Acton (Central line) stations. Acton Main Line (Elizabeth line) station is a mile away.

### Features

- Two Double Bedrooms
- Inter-War Period
- Circa 800 sq.ft
- Off-Street Parking
- Private Garage
- Share of Freehold

# Bromyard Avenue, London, W3



Total area (approx.): 68.7 sq. m (739.4 sq. ft)  
External storage area (approx.): 3.91 sq. m (42.0 sq. ft)  
Terrace area (approx.): 3.8 sq. m (40.9 sq. ft)