



Guide Price
£425,000

Freehold

3x  2x  1x 

**Buckingham Place,
Rustington, West
Sussex, BN16**

OVER 60?

Secure this property
for up to **59% less!**

cubitt & west
Helping you move forwards



Main features

- Well presented throughout
- Situated on a corner plot with great rear garden with bar area
- Garage (currently being used as an office)
- Located on sought after Parklands with private driveway
- Close to Rustington Village and good schools for all ages

Accommodation

GROUND FLOOR

Entrance Hall
 Cloakroom
 Lounge: 15'10 x 14'11 (4.83m x 4.55m)
 Kitchen: 9'3 x 6'8 (2.82m x 2.03m)
 Dining Area: 10'2 x 7'0 (3.10m x 2.14m)
 Conservatory: 9'11 x 9'9 (3.02m x 2.97m)

FIRST FLOOR

Landing
 Bedroom 1: 12'1 x 11'3 (3.69m x 3.43m)
 En-suite Shower Room
 Bedroom 2: 11'5 x 8'5 (3.48m x 2.57m)
 Bedroom 3: 8'3 x 6'3 (2.52m x 1.91m)
 Family Bathroom

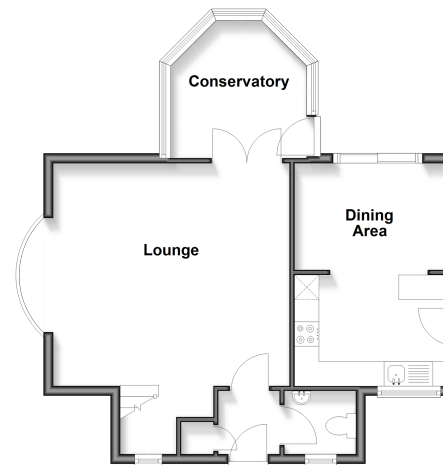
OUTBUILDING

Garage

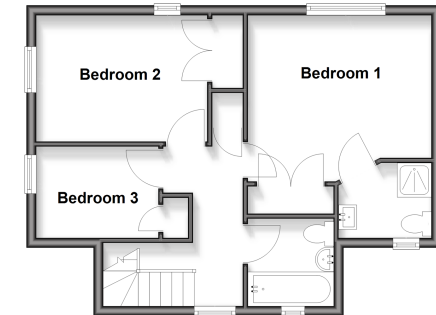
OUTSIDE

Front Garden
 Rear Garden
 Private Driveway

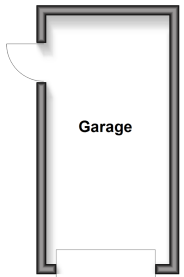
Ground Floor
 Approx. 51.4 sq. metres (552.8 sq. feet)



First Floor
 Approx. 43.5 sq. metres (468.7 sq. feet)



Outbuilding
 Approx. 12.9 sq. metres (138.6 sq. feet)



Call Rustington - 01903 775576 ■ cubittandwest.co.uk

■ Legal advice should be taken to verify fixtures/fittings, planning, alterations and/or lease details
 ■ Through a Homewise Home For Life Plan people aged 60+ can secure this property for up to 59% less, by purchasing a Lifetime Lease

■ Appliances & services are untested, dimensions are approximate and floor plans are not to scale



23707790/20260218/KH/LFOG