



Stoneacre
Properties



Harewood Croft, Leeds, LS15 8GS

£259,000

Stoneacre Properties are delighted to offer for sale a remarkable top floor apartment with higher than average ceiling and views over the lake. The property is located at Thorpe Park. Thorpe Park is a new retail, commercial, leisure and residential development that is sure to transform the east of Leeds into a vibrant place to live and work. Located just off the M1. There is a luxury hotel/spa, choice of cafés and restaurants and a state of the art cinema. In addition there is 140 acres of public parks and open spaces ready to explore. This delightful apartment comprises: entrance hall, open plan kitchen/living space, two bedrooms, ensuite shower room, bathroom and stunning balcony. There is also an allocated parking space with electric charge point and visitor parking.

OPEN PLAN KITCHEN/LIVING SPACE



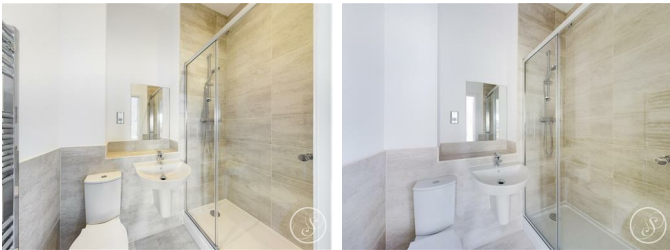
Double glazed sliding doors leading to balcony. Two central heating radiators. Range of wall and base units. Integrated oven and hob and extractor fan above. Double glazed window. Integrated fridge/freezer. Storage cupboard.

BEDROOM ONE



Two double glazed windows. Central heating radiator. Access into ensuite.

ENSUITE



Shower cubicle. Low flush w.c. Wash hand basin. Heated towel rail.

BEDROOM TWO



Double glazed window. Central heating radiator.

BATHROOM



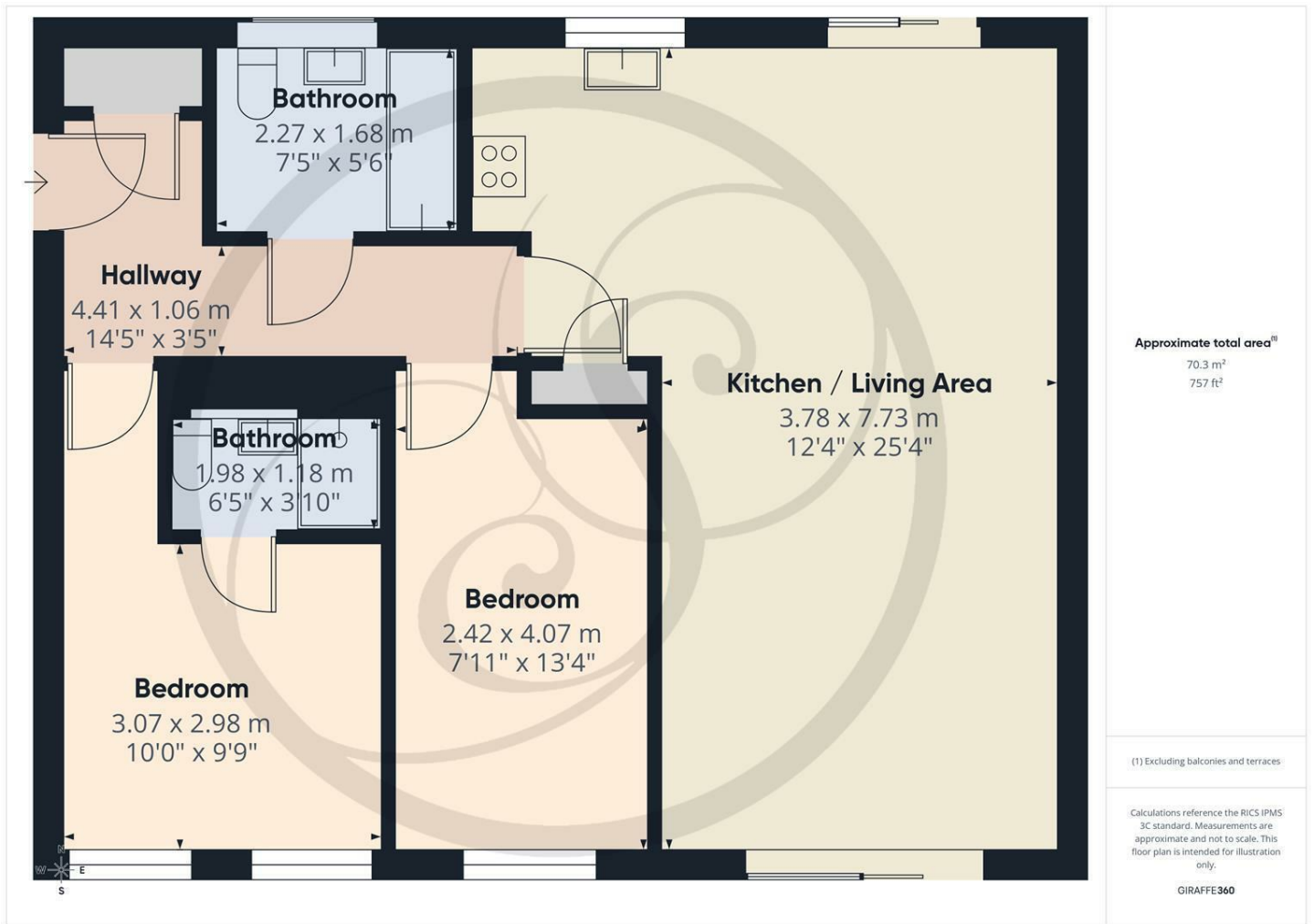
Double glazed frosted window. Low flush w.c. Wash hand basin. Heated towel rail.

EXTERNAL

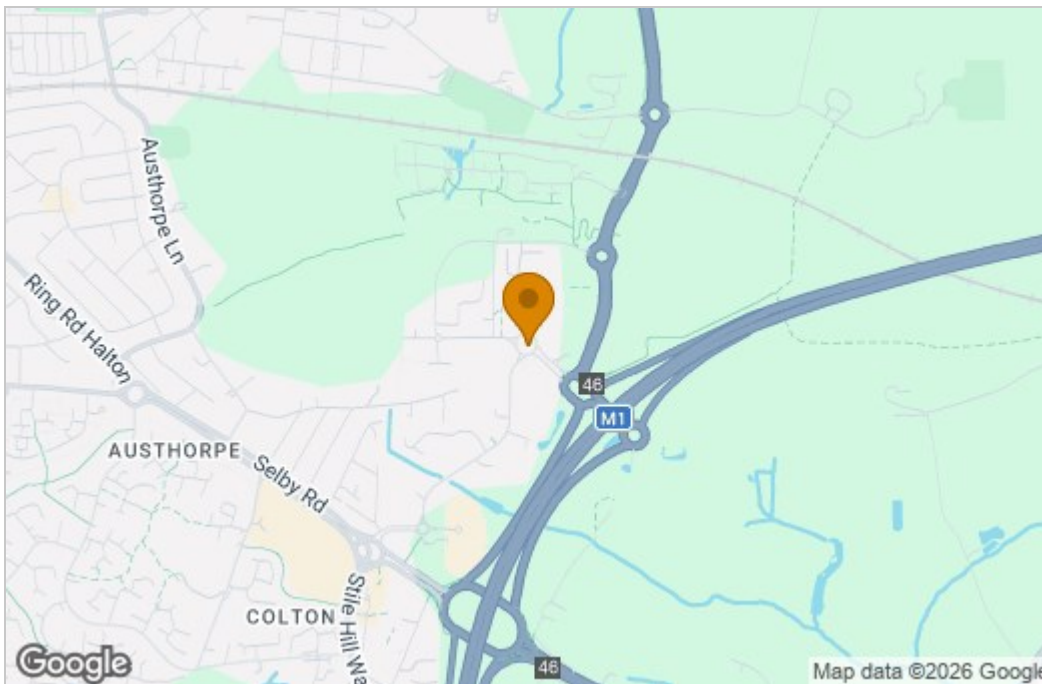


Parking space and two balconies. Electric car charger point.

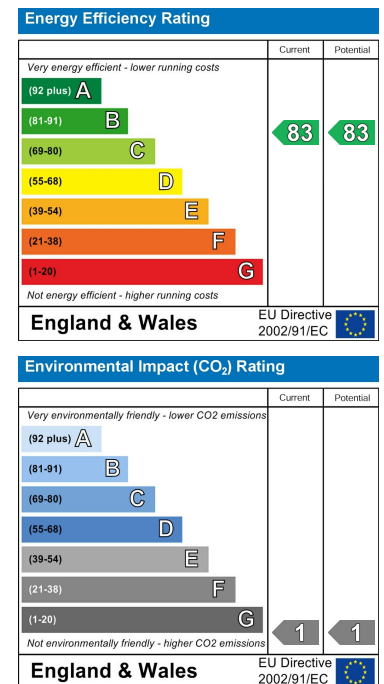
Floor Plan



Area Map



Energy Efficiency Graph



These particulars, whilst believed to be accurate are set out as a general outline only for guidance and do not constitute any part of an offer or contract. Intending purchasers should not rely on them as statements of representation of fact, but must satisfy themselves by inspection or otherwise as to their accuracy. No person in this firm's employment has the authority to make or give any representation or warranty in respect of the property.

