



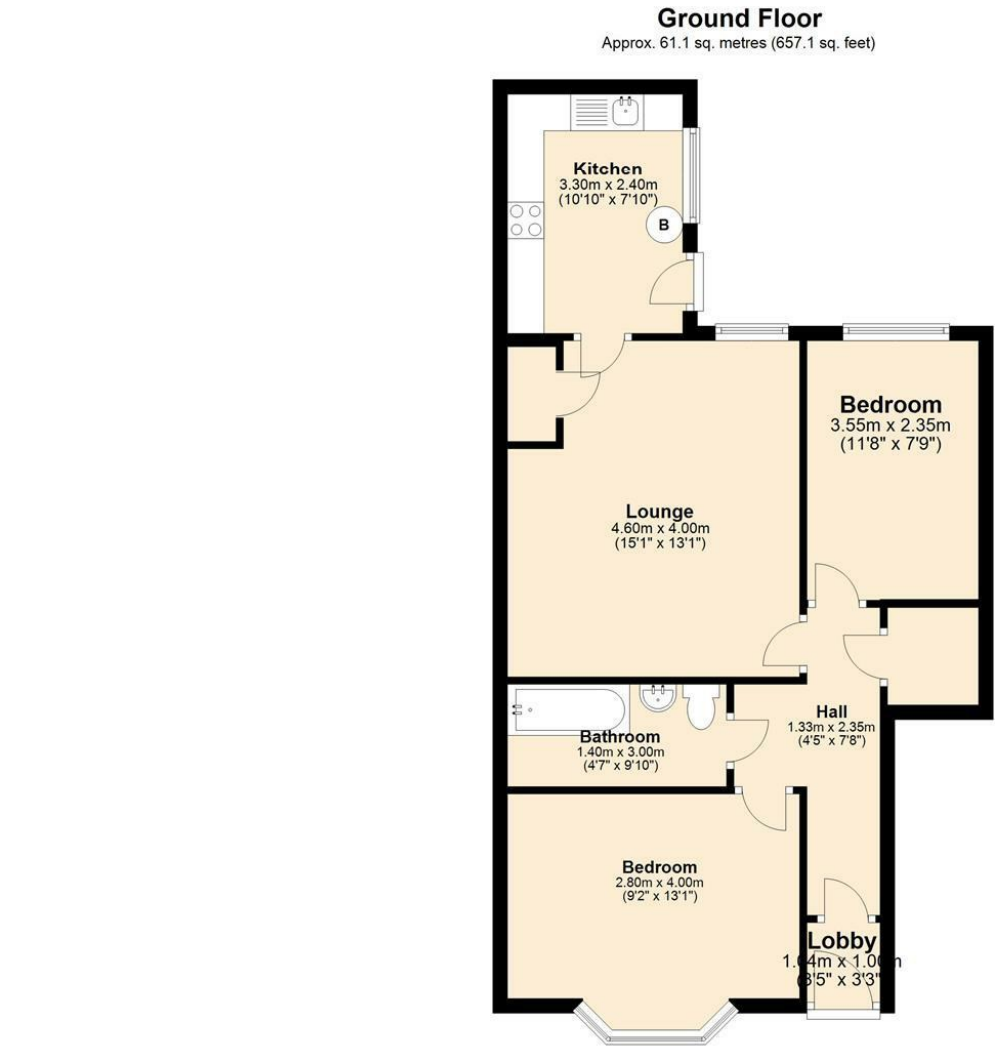
218 Doncaster Road, Newcastle Upon Tyne, NE2 1RB

£1,200 PCM

Available September 2026 | £1,200 per calendar month | Hive Estates presents this two bedroom ground floor flat, in the heart of Sandyford. The lounge is furnished with a large comfortable leather sofa, easy chair and a dining table with chairs.

Two good sized bedrooms with matching furniture. Within walking distance to both Universities and with excellent transport links this property is perfect for students or professionals.

Floor Plan



Area Map



These particulars, whilst believed to be accurate are set out as a general outline only for guidance and do not constitute any part of an offer or contract. Intending purchasers should not rely on them as statements of representation of fact, but must satisfy themselves by inspection or otherwise as to their accuracy. No person in this firms employment has the authority to make or give any representation or warranty in respect of the property.

Total area: approx. 61.1 sq. metres (657.1 sq. feet)

Energy Efficiency Graph

