



Fox Street

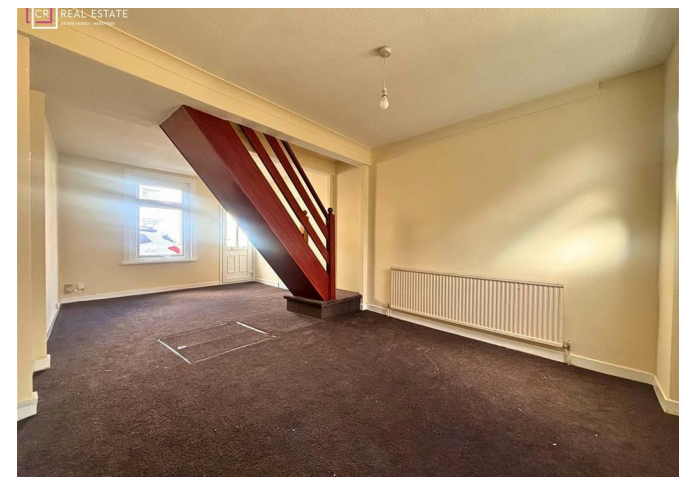
Gillingham | ME7 1HH

Fox Street , Gillingham, ME7 1HH

CR Real Estate are delighted to offer with no onward chain, this well-presented two-bedroom terrace property which we believe is ideal for first-time buyers or investors. The ground floor features a spacious through lounge/diner, a modern fitted kitchen, and a bathroom. Upstairs, you'll find two generously sized double bedrooms. Additional benefits include a useful cellar for storage and a private, enclosed rear garden. Conveniently located just a short walk from Gillingham town centre, local amenities, and transport links. Please call us now to arrange your appointment to view.

- Victorian Terrace Home
- No Onward Chain
- Ideal First Time Buy Or Investment
- Enclosed Garden To Rear
- Two Double Bedrooms
- Useful Cellar
- Close To Gillingham Town centre
- Call Now To View

£210,000



Lounge

11'3 x 9'8 (3.43m x 2.95m)

Dining Room

11'3 x 9'6 (3.43m x 2.90m)

Kitchen

11'5 x 5'5 (3.48m x 1.65m)

Bathroom

7'5 x 5'5 (2.26m x 1.65m)

Bedroom

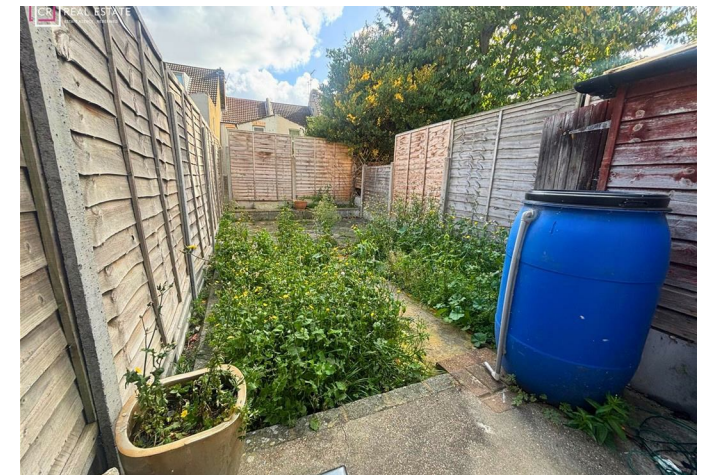
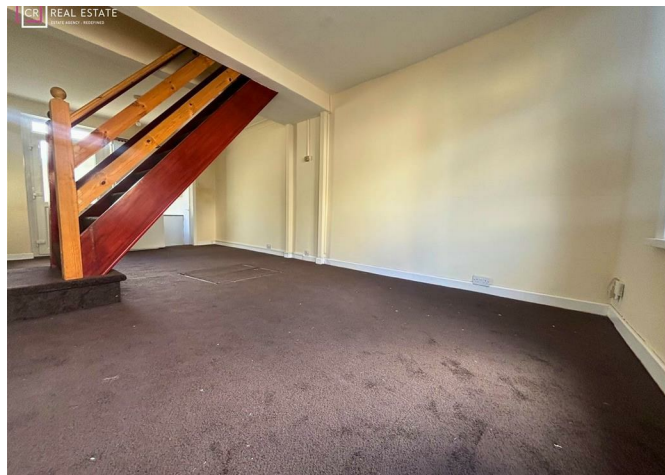
11'3 x 9'8 (3.43m x 2.95m)

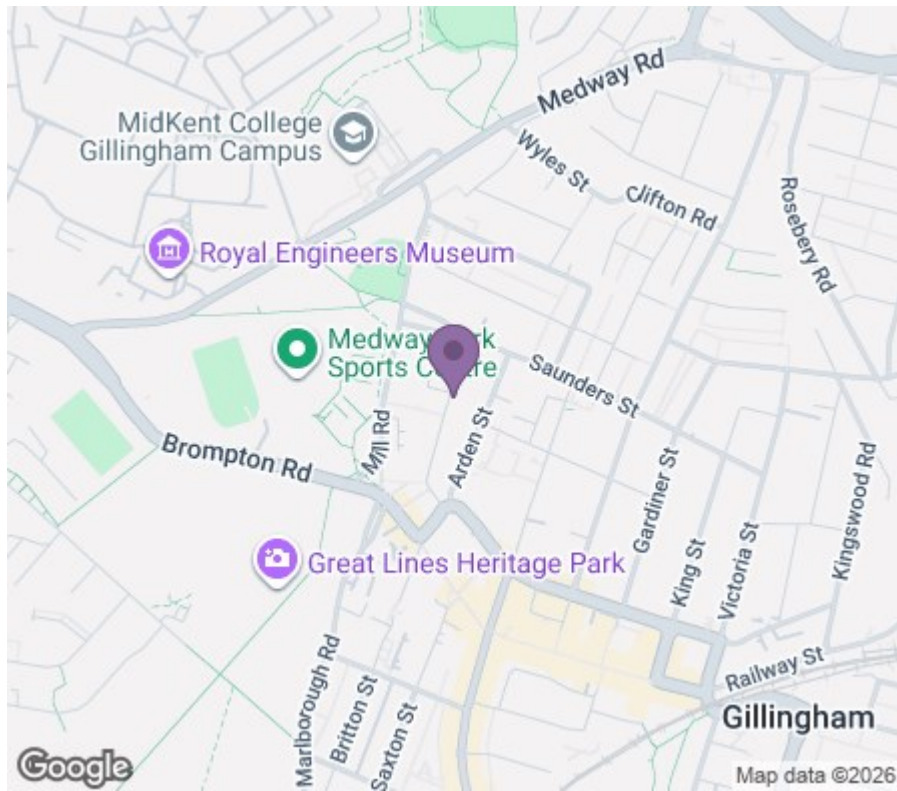
Bedroom

11'3 x 9'6 (3.43m x 2.90m)

Cellar

11'3 x 9'8 (3.43m x 2.95m)





18 - 20 High Street
Gillingham
Kent
ME7 1BB

01634 570057

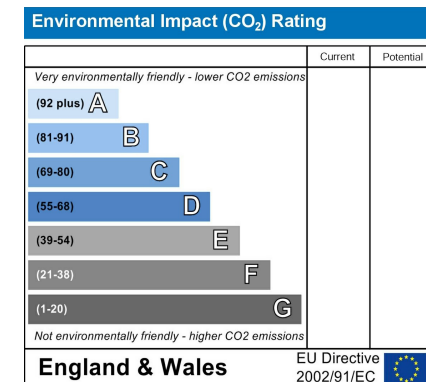
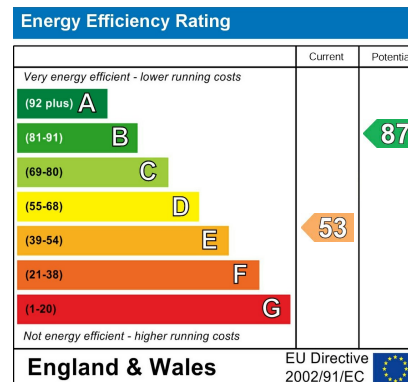
www.crralestate.co.uk

twitter.com/CRRRealEstateUK

facebook.com/CRRRealEstateUK



rightmove
find your happy



CR Real Estate endeavour to maintain accurate depictions of properties in Virtual Tours, Floor Plans and descriptions, however, these are intended only as a guide and purchasers must satisfy themselves by personal inspection.