



## Gibbons Way, offers over £180,000

- Garage
- Off Road Parking
- Generous Sized Accommodation
- Four Piece Bathroom
- Viewing Recommended
- EPC Rating: D



 3  2  1



## About the property

This three-bedroom home on Gibbons Way, North Cornelly, presents an excellent opportunity for buyers seeking a well-located property with versatile living space. Situated in a popular residential area, it offers convenient access to local schools, shops, and transport links, making it a practical choice for families and commuters alike.

The interior features a spacious lounge and a kitchen designed to accommodate everyday living, with three well-sized bedrooms upstairs providing flexibility for family use, guest accommodation, or a home office. A bathroom completes the upper floor, ensuring functionality for modern lifestyles.

Outside, the property benefits from a private rear garden, ideal for relaxation or entertaining. To the front, a driveway provides off-road parking and leads to a garage, adding valuable storage and convenience.

With its combination of location, space, and practical features, this property on Gibbons Way is perfectly suited to those looking for a home that balances comfort with accessibility.



## Accommodation

**Entrance Hall**

**Lounge**

14' 4" x 11' 8" ( 4.37m x 3.56m )

**Kitchen**

13' x 11' 8" ( 3.96m x 3.56m )

**Ground Floor Wc**

**First Floor**

**Bedroom One**

13' x 11' 7" ( 3.96m x 3.53m )

**Bedroom Two**

14' 4" x 11' 8" ( 4.37m x 3.56m )

**Bedroom Three**

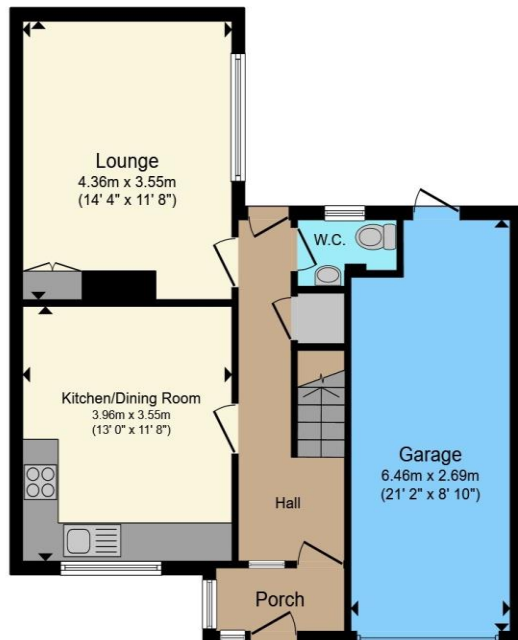
8' 10" x 7' 8" ( 2.69m x 2.34m )

**Bathroom**

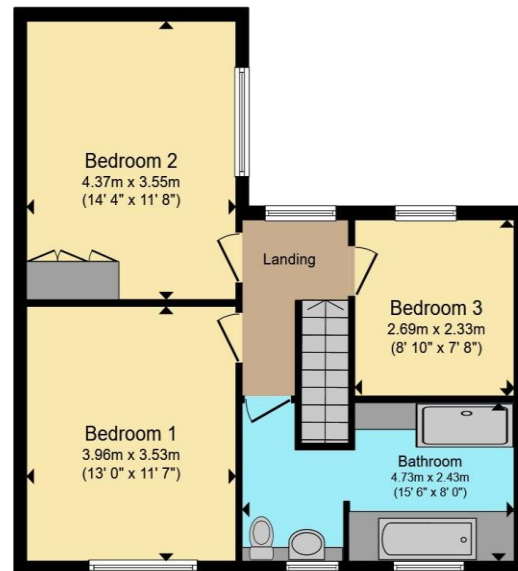
01656 771600

porthcawl@peteralan.co.uk

## Floorplan



**Ground Floor**



**First Floor**

Total floor area 115.5 m<sup>2</sup> (1,243 sq.ft.) approx

This floor plan is for illustrative purposes only. It is not drawn to scale. Any measurements, floor areas (including any total floor area), openings and orientation are approximate. No details are guaranteed, they cannot be relied upon for any purpose and they do not form part of any agreement. No liability is taken for any error, omission or misstatement. A party must rely upon its own inspection(s). Powered by [www.propertybox.io](http://www.propertybox.io)



## Important Information

Note while we endeavour to make our sales details accurate and reliable, if there is any point which is of particular interest to you, please contact the office and we will be pleased to confirm the position for you. We have not personally tested any apparatus, equipment, fixtures, fittings or services and cannot verify they are in working order or fit for their purposes. Nothing in these particulars is intended to indicate that carpets or curtains, furnishings or fittings, electrical goods (whether wired or not). Gas fires or light fittings or any other fixtures not expressly included form part of the property offered for sale. This computer generated Floorplan, if applicable, is intended as a general guide to the layout and design of the property. It is not to scale and should not be relied upon for dimensions. Tenure: We cannot confirm the tenure of the property as we have not had access to the legal documents. The buyer is advised to obtain verification from their solicitor or surveyor.

Peter Alan Limited is registered in England and Wales under company number 2073153, Registered Office is Cumbria House, 16-20 Hockliffe Street, Leighton Buzzard, Bedfordshire, LU7 1GN. VAT Registration Number is 500 2481 05. For activities relating to regulated mortgages and non-investment insurance contracts, Peter Alan Limited is an appointed representative of Connells Limited which is authorised and regulated by the Financial Conduct Authority. Connells Limited's Financial Services Register number is 302221. Most buy-to-let

