



Montgomery Road, W4 £485,000

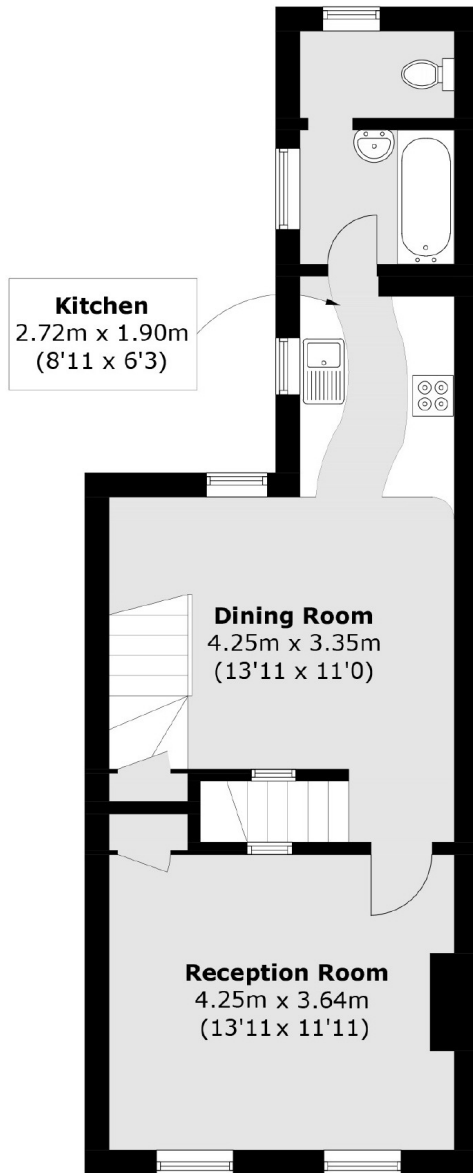
Expecting offers in excess of the asking price and with the full freehold stands this well-presented one/two bedroom split-level conversion flat located on this tree-lined road. The property is offered with no onward chain and benefits from a large, private south facing garden.

Montgomery Road is located within close walking distance of Chiswick Park (District) and South Acton (Overground) underground stations as well as the many bars, restaurants, cafés and shops of Chiswick High Road.

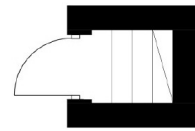
Features

- One/Two Bedrooms
- Split-Level
- Conversion
- Private South-Facing Garden
- Close To Transport
- No Onward Chain

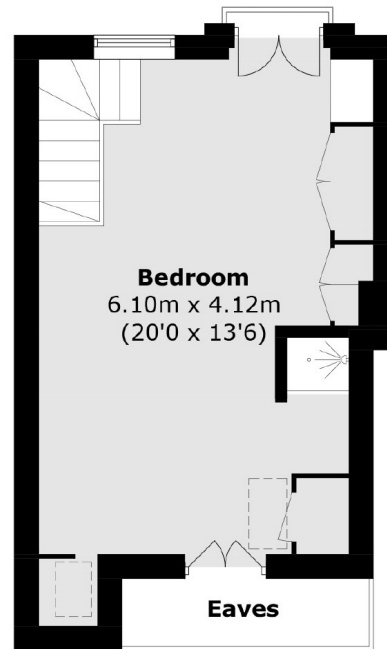
Montgomery Road, London, W4



First Floor



Ground Floor



Second Floor

Total area (approx.): 70.4 sq. m (757.7 sq. ft)
(Excluding Eaves)