

SNELLERS

ESTATE AGENTS



Town Meadow, TW8

£449,950

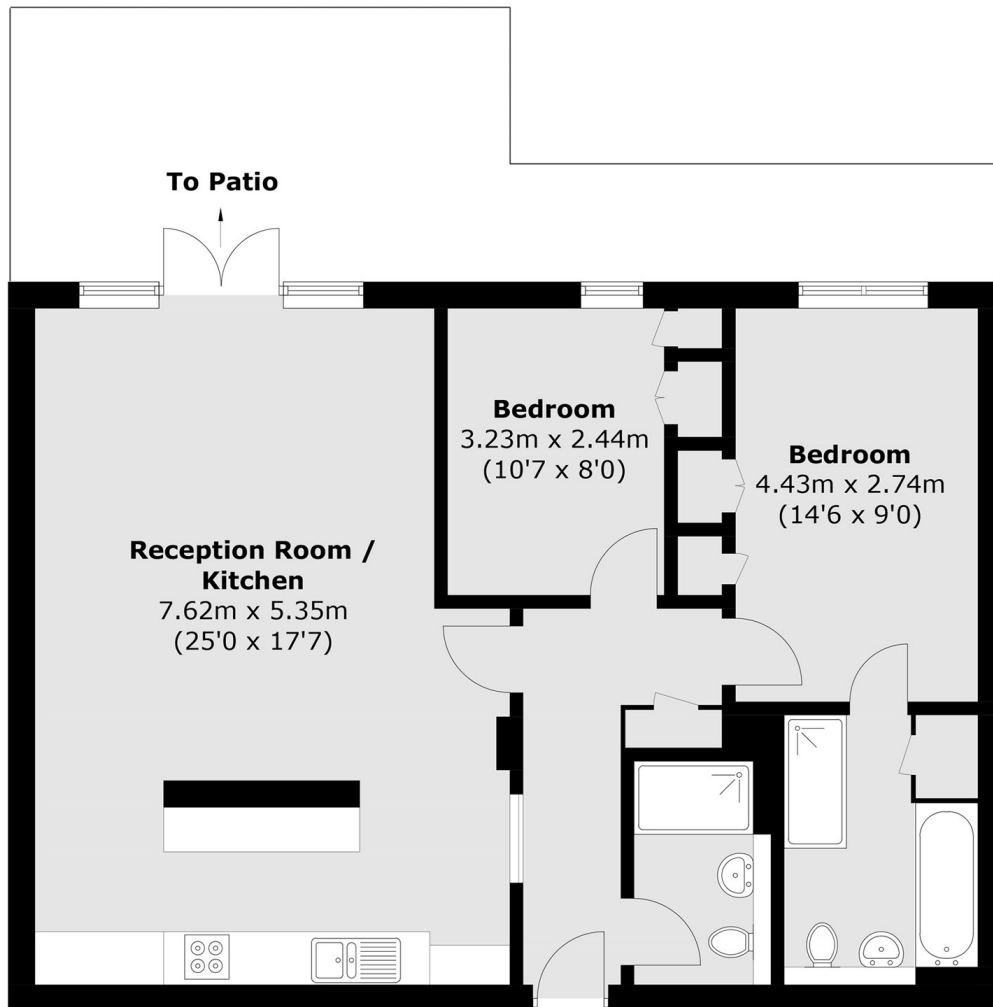
This well-presented two bedroom apartment offers bright and spacious accommodation with a modern, open-plan layout ideal for contemporary living. The property is well maintained throughout, with generous proportions and a layout designed to maximise both natural light and practicality.

Situated in Brentford, the property is conveniently located close to a range of shops, cafés and riverside walks, with excellent transport links nearby providing easy access into London and surrounding areas.

- Two bedrooms
- Private patio
- Spacious layout
- Bright interiors
- Riverside location

SNELLERS

ESTATE AGENTS



Total area (approx.): 81.3 sq. m (875.1 sq. ft)

Snellers St. Margarets Sales
36 Crown Road
St Margarets
TW1 3EH
020 8892 8008
stmargaretssales@snellers.co.uk

Energy Rating: B We aim to make our particulars both accurate and reliable. However they are not guaranteed; nor do they form part of an offer or contract. If you require clarification on any points then please contact us, especially if you're traveling some distance to view. Please note that appliances and heating systems have not been tested and therefore no warranties can be given as to their good working order