



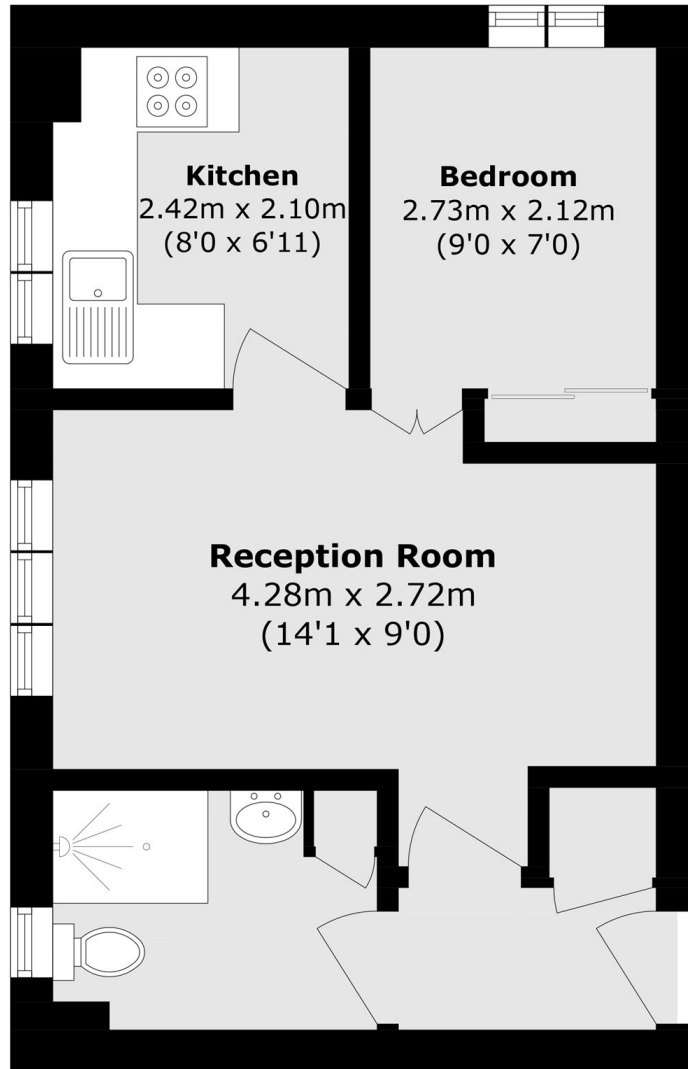
## Brindley Close, HA0

**£225,000**

The property features a bright, spacious reception room, fitted kitchen, double bedroom and fully tiled shower room, all off a welcoming hallway. Presented in good condition, it's ideal for first-time buyers or investors, with communal gardens and residents' parking.

Brindley Close is conveniently located approximately half a mile from Alperton Underground Station (Piccadilly Line) and within easy reach of Perivale and Hanger Lane stations (Central Line), providing swift access into Central London. Local shops, bus routes and the A40 are also close by.

- One Double Bedroom • First Floor • Communal Gardens •
- Resident Permit Parking • Conveniently Located • Long Lease •



Total area (approx.): 29.8 sq. m (321.1 sq. ft)

David Conway  
020 8422 5222

Energy Rating: C We aim to make our particulars both accurate and reliable. However they are not guaranteed; nor do they form part of an offer or contract. If you require clarification on any points then please contact us, especially if you're travelling some distance to view. Please note that appliances and heating systems have not been tested and therefore no warranties can be given as to their good working order.