



Eastcastle Street, W1T

£1,245 Per week

Dexters



Eastcastle Street, W1T

A beautifully presented two bedroom, two bathroom apartment located in Fitzrovia. The property boasts ample storage space, two en-suite bathrooms and lets in a great amount of natural light. The property also has a communal outside space.

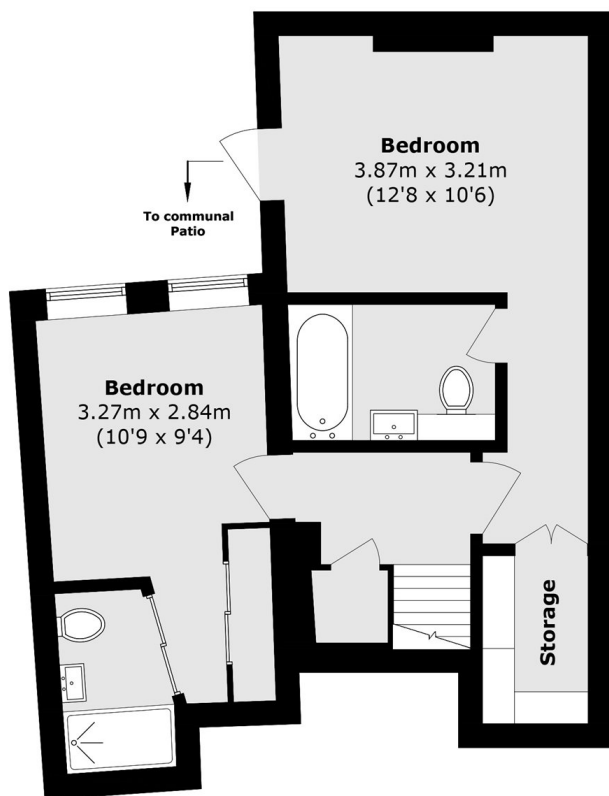
York House, located on Eastcastle Street has a great selection of cafes, shopping amenities and art galleries all within walking distance. The central location allows for great transport links, with Tottenham Court Road and Godege Street Station all nearby.

Features

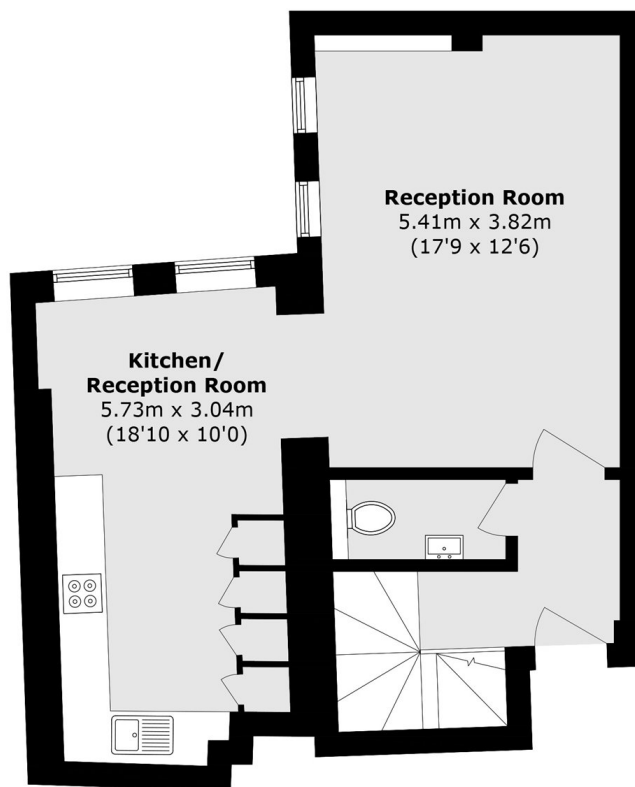
- Two Bedroom
- Two Bathroom
- Storage Space
- Modern
- Natural Light
- Central Location



Eastcastle Street, London, W1T



Lower Ground Floor



Ground Floor

Total area (approx.): 102.4 sq. m (1102.2 sq. ft)