



Price
£350,000

Freehold

3x  2x  1x 

**Hinton Road, Newport,
Isle of Wight, PO30**

OVER 60?

Secure this property
for up to **59% less!**

Pittis 
Helping you move forwards



Main features

- Detached bungalow in a popular location, on the edge of Newport
- Detached garage and off road parking at front and rear
- Beautifully presented throughout
- Large sunny garden
- Near to local schools, shops and amenities

Accommodation

GROUND FLOOR

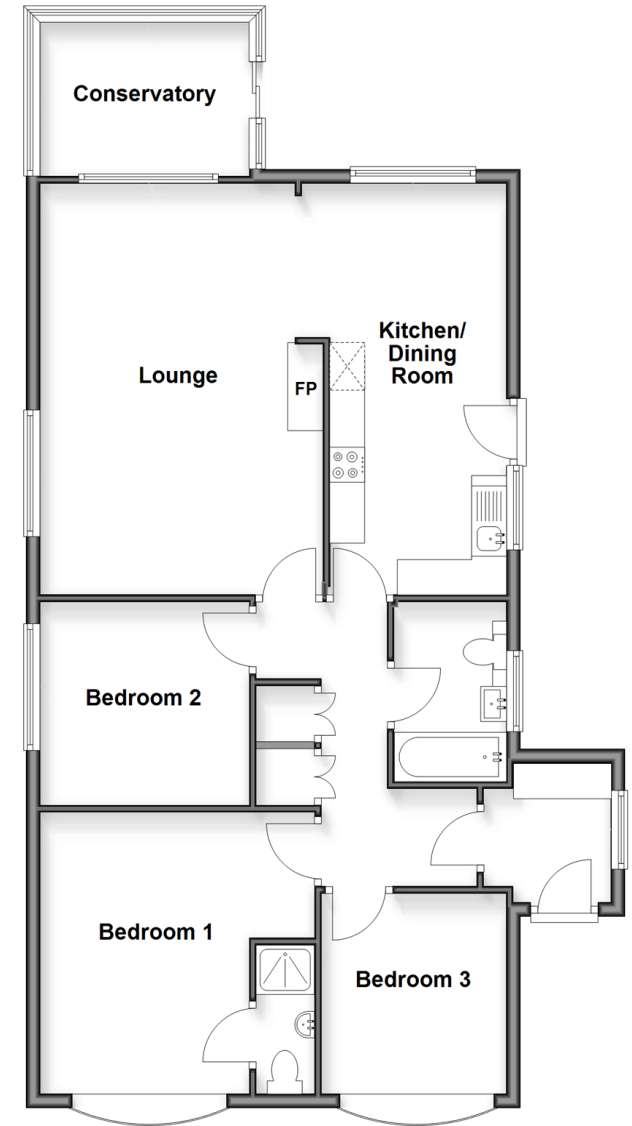
Porch
Hall
Bathroom
Kitchen / Dining Room: 19'2 x 8'2 (5.85m x 2.49m)
Lounge: 19'2 x 12'0 (5.85m x 3.66m)
Conservatory: 9'7 x 8'1 (2.92m x 2.47m)
Bedroom 2: 10'2 x 9'5 (3.10m x 2.87m)
Bedroom 1: 12'3 x 9'10 (3.74m x 3.00m)
En-suite
Bedroom 3: 9'3 x 8'7 (2.82m x 2.62m)

OUTSIDE

Front Garden
Driveway
Garage
Rear Garden
Rear Driveway

Ground Floor

Approx. 96.8 sq. metres (1042.0 sq. feet)



Call Newport - 01983 528888 ■ pittis.co.uk

- Legal advice should be taken to verify fixtures/fittings, planning, alterations and/or lease details
- Appliances & services are untested, dimensions are approximate and floor plans are not to scale
- Through a Homewise Home For Life Plan people aged 60+ can secure this property for up to 59% less, by purchasing a Lifetime Lease



60320883/20260108/MB/TB