



Petersham Place
South Kensington, SW7

CHESTERTONS





Exceptional five bedroom mews house arranged over multiple floors, offering over 2,080 sq ft of beautifully renovated living space.

- Prime South Kensington location moments from Hyde Park and the museums
-
- Five double bedrooms arranged over multiple floors
-

£10,500 pcm

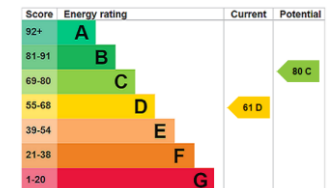
Additional tenant charges apply (fees apply to non-AST tenancies only)

Tenancy Agreement Fee: £300

References per Tenant/Guarantor: £60

Inventory check (approx. £100 – £250 inc. VAT)

chestertons.co.uk/property-to-rent/applicable-fees



Minimum Term: 12 months
Deposit Required: £0.00
Local Authority: Kensington and Chelsea
Council Tax Band: H
EPC Rating: D
Unfurnished

Chestertons South Kensington Lettings

44-48 Old Brompton Road
 South Kensington
 London
 SW7 3DY

southkensingtonlettingsusers@chestertons.co.uk
 02075891244

Petersham Place, SW7

Approximate gross internal area

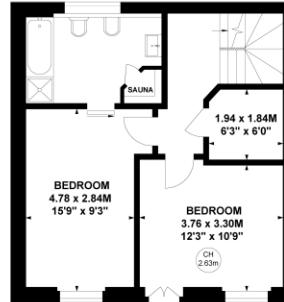
214.06 sq m / 2304 sq ft

(Including Basement Storage & Eaves Storage)

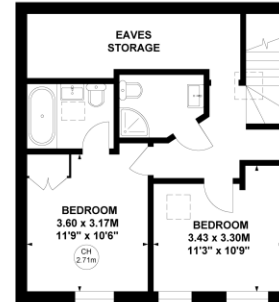
Basement Storage : 17.35 sq m / 187 sq ft

Eaves Storage : 8.91 sq m / 96 sq ft

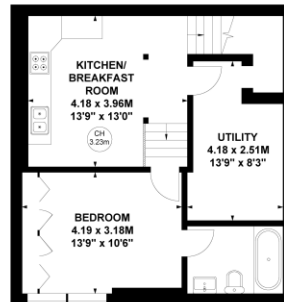
Key :
CH - Ceiling Height



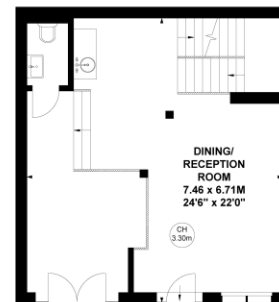
First Floor



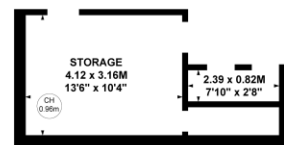
Second Floor



Lower Ground Floor



Ground Floor



Basement

This plan is not to scale and must be used as layout guidance only. All measurements and areas are approximate and should not be relied upon to provide accurate information. This plan must not be relied upon when making property valuations, design considerations or any other such relevant decisions. We accept no responsibility or liability (whether in contract, tort or otherwise) in relation to any loss whatsoever arising from or in connection with any use of this plan or the adequacy, accuracy or completeness of it or any information within it.

Chesterton UK Services Limited trading as Chestertons for themselves and for the vendor of this property whose agents they are, give notice that (i) these particulars do not constitute any part of an offer or contract, (ii) all statements contained within these particulars are made without responsibility on the part of Chestertons or the vendor, (iii) whilst made in good faith, none of the statements contained within these particulars are to be relied upon as a statement or representation of fact, (iv) any intending purchasers must satisfy themselves by inspection or otherwise as to the correctness of each of the statements contained within these particulars, (v) the vendor does not make or give either Chestertons or any person in their employment any authority to make or give representation or warranty whatsoever in relation to this property. Wide angle lenses may be used. ©Copyright Chestertons | Chesterton Global Ltd | Registered Office 5th Floor, The Lantern, 75 Hampstead Road, London, NW1 2PL Registered Company Number 05334580.



This paper is
100% recyclable