



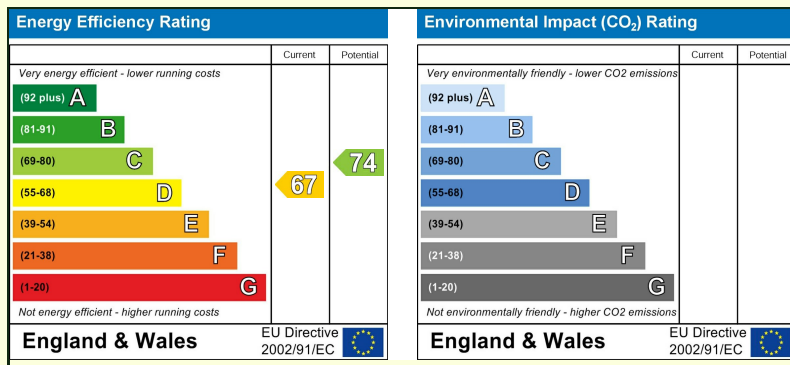
DERBYSHIRE'S
— *Estate Agents* —

102 King Cuthred Close, Chard, Somerset,
TA20 2JD

This beautifully presented two double bedroom semi-detached chalet bungalow occupies a generous corner plot and has been modernised throughout in recent years by the current owners, offering stylish, move-in-ready accommodation.

This is a very well-maintained and thoughtfully updated home, finished in a modern style throughout and ideal for buyers seeking a property that requires no immediate work.

Offered to the market chain free, this superb chalet bungalow represents a rare opportunity to acquire a spacious and versatile home on a sought-after corner plot with excellent parking and workshop facilities.



- Chain Free
- Chalet Bungalow
- Modernised throughout
- Spacious Corner Plot
- Garage & Workshop
- Gated Driveway

102 King Cuthred Close, Chard, Somerset, TA20 2JD
Chain Free £325,000

This beautifully presented semi-detached chalet bungalow occupies a generous corner plot and has been modernised throughout in recent years by the current owners, offering stylish, move-in-ready accommodation.

The property is approached via a gated driveway providing secure off-road parking and leading to a detached garage with adjoining workshop, with the added benefit of further driveway parking to the front. The spacious plot provides a pleasant sense of privacy and excellent outdoor space.

Internally, the accommodation is both versatile and well-planned. The ground floor comprises an entrance hall, dining room with stairs rising to the attic space, a modern kitchen/breakfast room, contemporary shower room, double bedroom with built-in wardrobes, comfortable sitting room, and a

conservatory overlooking the garden.

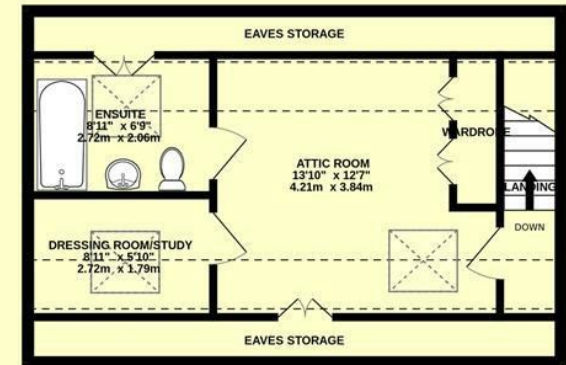
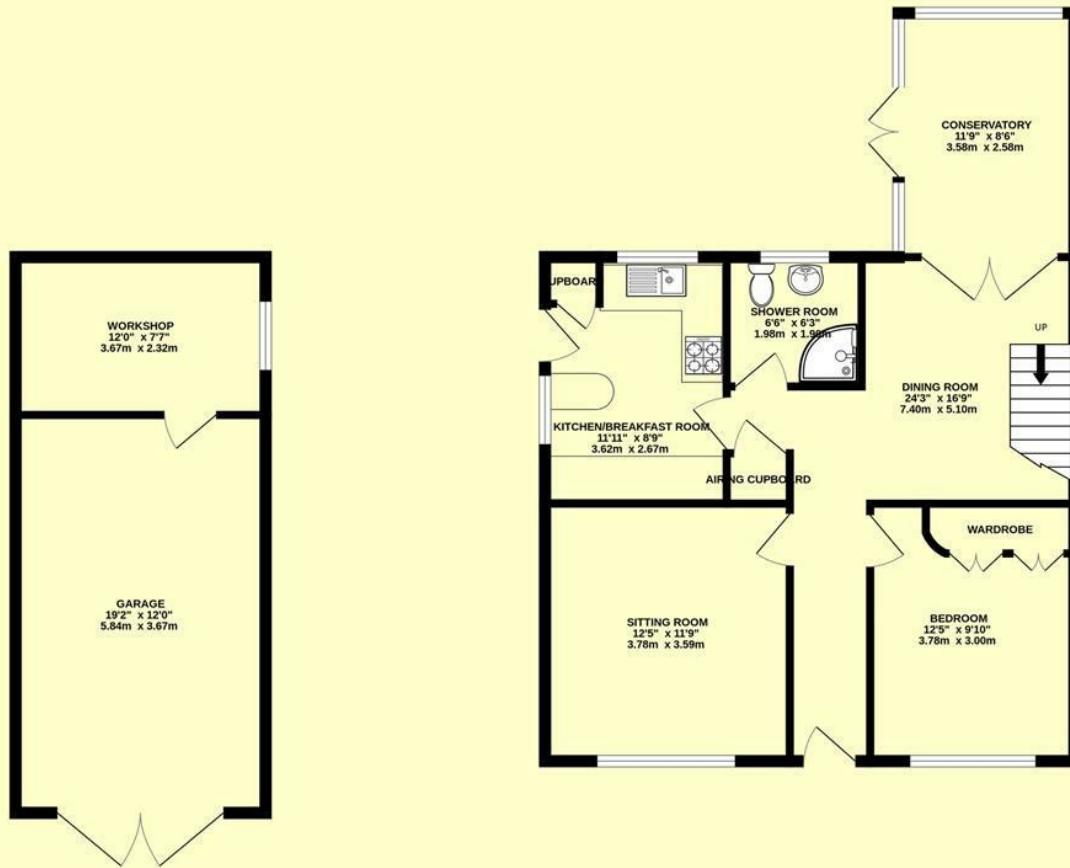
The first floor attic space is currently used as a generous double bedroom with built-in wardrobes and access to eaves storage, a separate dressing room/study, and a well-appointed en-suite bathroom, also benefiting from additional eaves storage. All first-floor rooms enjoy attractive dormer-style windows, enhancing both space and natural light.

This is a very well-maintained and thoughtfully updated home, finished in a modern style throughout and ideal for buyers seeking a property that requires no immediate work.

Offered to the market chain free, this superb bungalow represents a rare opportunity to acquire a spacious and versatile home on a sought-after corner plot with excellent parking and workshop facilities

GROUND FLOOR
1040 sq.ft. (96.6 sq.m.) approx.

1ST FLOOR
434 sq.ft. (40.3 sq.m.) approx.



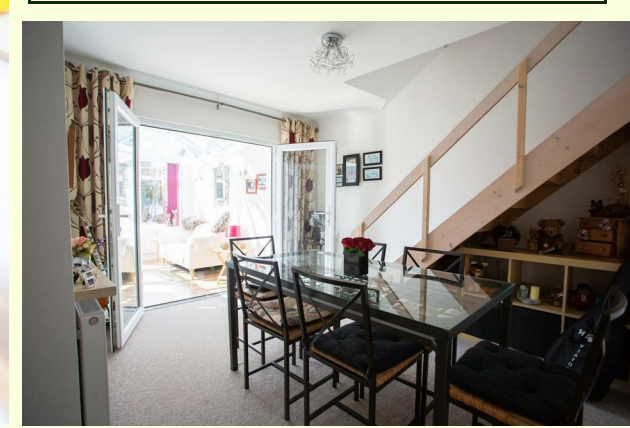
TOTAL FLOOR AREA : 1474 sq.ft. (136.9 sq.m.) approx.

Whilst every attempt has been made to ensure the accuracy of the floorplan contained here, measurements of doors, windows, rooms and any other items are approximate and no responsibility is taken for any error, omission or mis-statement. This plan is for illustrative purposes only and should be used as such by any prospective purchaser. The services, systems and appliances shown have not been tested and no guarantee as to their operability or efficiency can be given.

Made with Metropix ©2026



Directions -





DERBYSHIRE'S
— *Estate Agents* —

11, High Street, Chard, Somerset, TA20 1QF
www.derbyshires.net 01460 63600