



Courtlands, TW10

£625,000

At approximately 845 sq ft this excellent mansion block apartment has been completely refurbished by the current owners and is centrally located for a number of Ofsted rated outstanding schools including Holy Trinity, Marshgate and St Elizabeth's.

Courtlands is a well maintained private sought after residential development set within extensive communal grounds and benefitting from on-site portage. Richmond and North Sheen stations offer tube or rail services into Central London via the District Line, South West Trains and London Overground.

Features

- Two Double Bedrooms
- Spacious Reception
- Modern Fitted Kitchen
- Residents Parking
- Delightful Communal Grounds
- Share Of Freehold



Courtlands, TW10

The property is entered via a communal entrance hall with secure entry phone system and provides lift and staircase access to the first floor communal landing with door into the property.

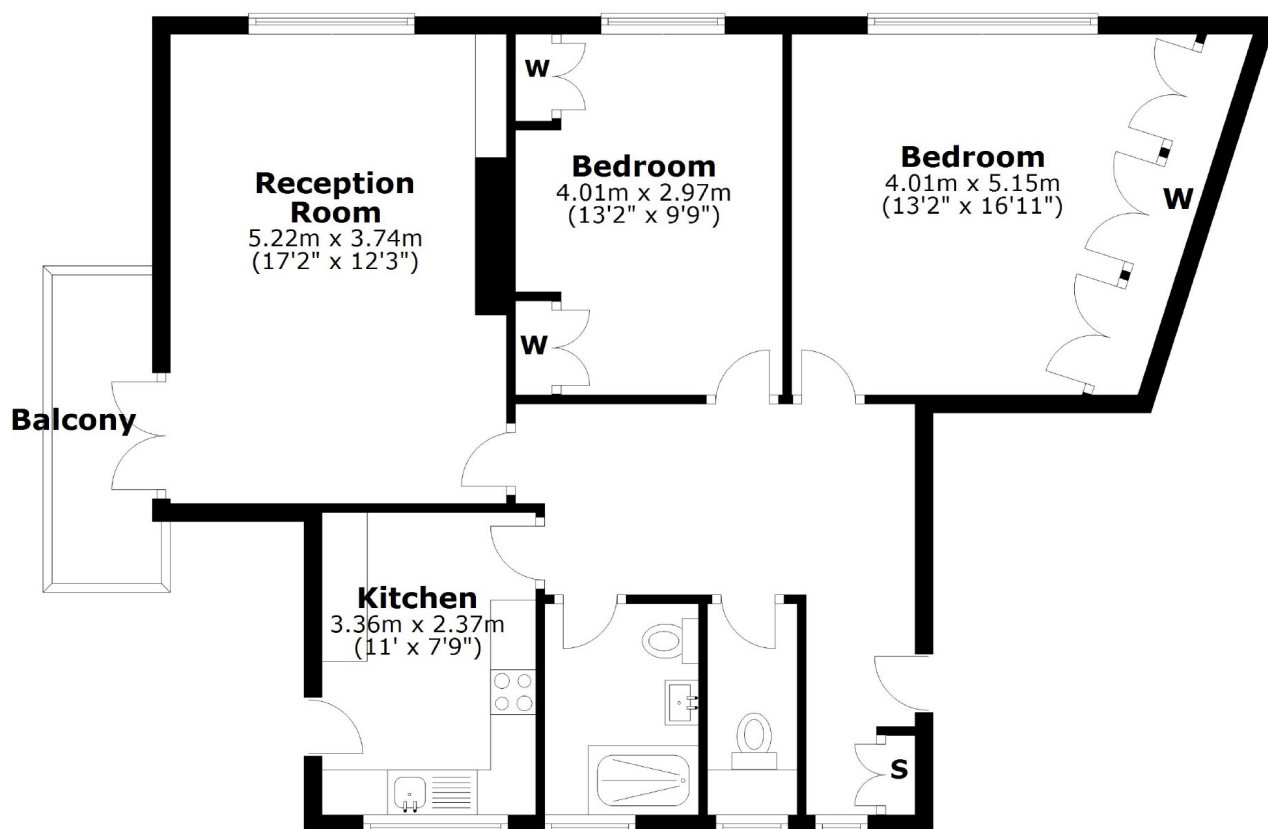
The accommodation consists of a large entrance hall with storage cupboards, a spacious reception room with french doors leading to a private balcony, a fully fitted modern kitchen, a master double bedroom with built-in wardrobes, a second double bedroom with built-in wardrobes, a modern bathroom and a separate W/C.

To the outside is unallocated off street parking spaces for residents and visitors. The property is surrounded by well maintained communal grounds with areas laid to lawn with mature trees, flowers and shrubs including a delightful pond.



Courtlands, Richmond, TW10

First Floor



Main area: Approx. 78.6 sq. metres (845.6 sq. feet)
Plus balconies, approx. 4.2 sq. metres (44.9 sq. feet)