



**Fenwick Place, SW9**

**£700,000**

**Dexters**



## Fenwick Place, SW9

A beautifully presented two double bedroom house arranged over multiple floors on the sought-after Fenwick Place in Clapham, benefiting from a private garden and a stunning open-plan living space occupying the top floor. The property comprises two well proportioned double bedrooms, a modern family bathroom, and a bright and spacious open plan reception, kitchen and dining area on the upper floor, creating an ideal entertaining space with excellent natural light throughout. To the rear, the property further benefits from a private garden and will be sold chain free.

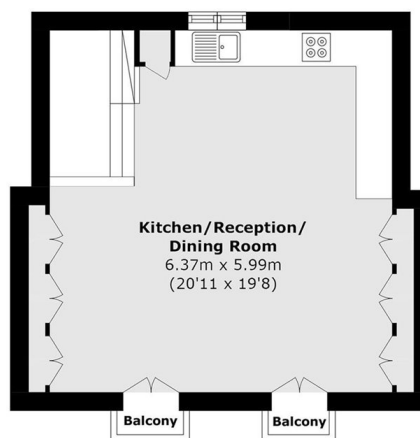
Fenwick Place is ideally located close to the many shops, restaurants and bars of Clapham High Street and Clapham Old Town, with excellent transport links nearby including Clapham North Underground Station (Northern Line) and Clapham High Street Overground.

### Features

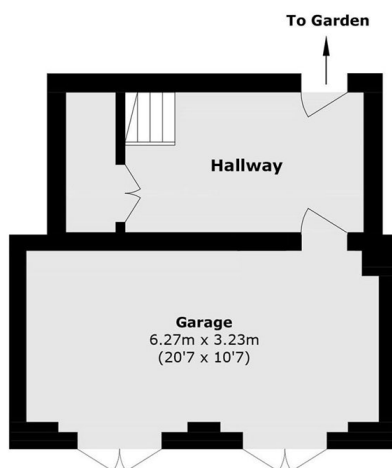
- Chain Free
- Garage
- Private Garden
- Open Plan
- Two Double Bedrooms



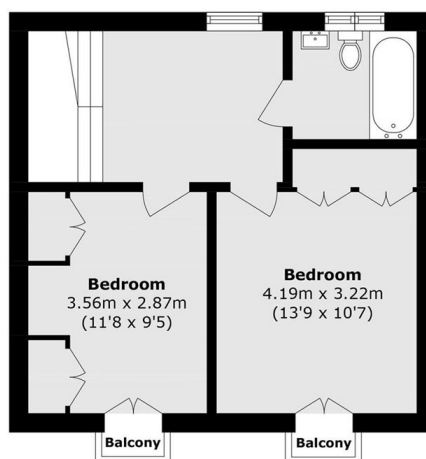
# Fenwick Place, London, SW9



**Second Floor**



**Ground Floor**



**First Floor**

Total area (approx.): 85.1 sq. m (916.0 sq. ft)  
Balcony area (approx.): 16.4 sq. m (176.5 sq. ft)  
Garage area (approx.): 20.2 sq. m (217.4 sq. ft)  
(Shared)