



MILLARD
COOK

Kimberley House

South Town, Dartmouth, TQ6 9BX

A delightful coastal home close to the town centre with a garage.



Kimberley House is a wonderful semi-detached townhouse occupying one of Dartmouth's most prestigious residential positions. Ideally located within easy reach of the town centre, the property enjoys outstanding panoramic views across the River Dart, Kingswear, upstream towards Noss Marina and out to sea.

Built in the 1990s ???, the property offers well-balanced and flexible accommodation arranged over three floors, making it ideal as either a permanent residence or an excellent second home investment.

The accommodation includes three bedrooms, an en-suite shower room and a family bathroom, together with a good-sized integral garage and store, a private rear courtyard and a balcony creating a fantastic “turn-key” home opportunity.

One of the standout features of Kimberley House is the exceptional river and sea views from several principal rooms.

Additional benefits include a recent kitchen, double glazing and gas fired central heating system.



Accommodation

Ground Floor

Entrance porch leading to the entrance hall with stairs rising to the upper floors and a door providing access to the integral garage.

First Floor

The main living level comprises an open-plan living, dining and kitchen area. A bay window takes full advantage of the stunning panoramic views across the River Dart, Kingswear, upstream and out to sea. The living area provides ample space for seating and features a gas fire.

The dining area sits adjacent to the newly fitted kitchen, which offers a comprehensive range of cupboards and drawers, a built-in five-ring gas hob with oven below, Belfast-style sink, dishwasher and space for a large fridge/freezer. A cupboard provides space and plumbing for a washing machine and tumble dryer.



Second Floor

Landing with stairs rising to the top floor.

The principal double bedroom features four large mirrored sliding wardrobes and a bay window with Juliet-style double doors, enjoying uninterrupted views across the River Dart and out to sea.

The second double bedroom benefits from a door and window opening onto the rear courtyard.

The bathroom is fully tiled and fitted with a panelled bath, large corner walk-in shower cubicle, WC, wash hand basin, radiator and window.



Third Floor

Guest bedroom with double doors opening onto the balcony, offering spectacular 180-degree views across the river and out to sea.

A large storage cupboard houses the gas combination boiler providing domestic hot water and central heating.

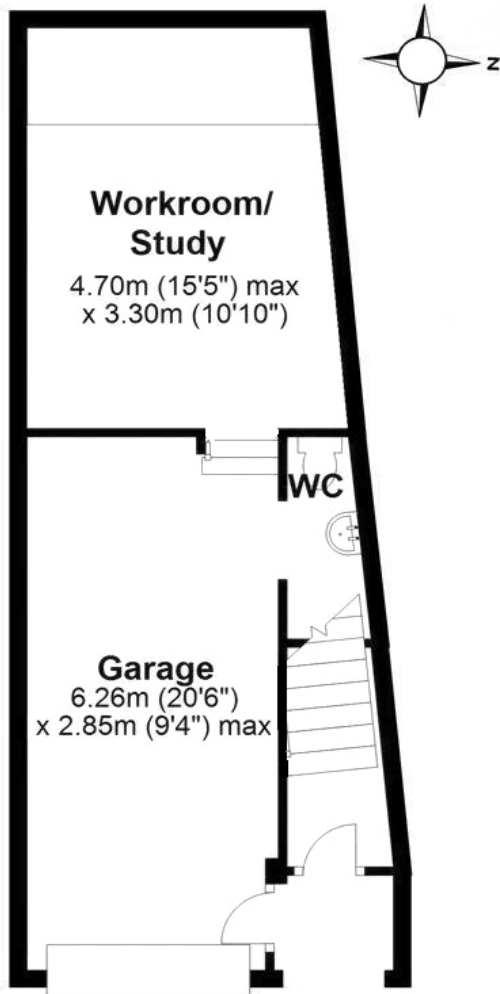
The en-suite shower room comprises a shower cubicle with shower system, WC, wash hand basin, radiator, window and eaves storage.



Kimberley House, Dartmouth

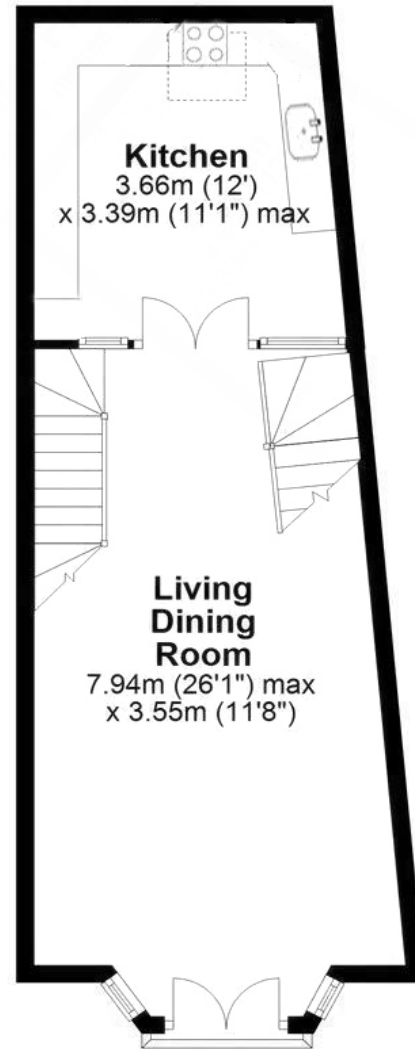
Ground Floor

Approx. 41.1 sq. metres (442.6 sq. feet)



First Floor

Approx. 42.3 sq. metres (455.0 sq. feet)



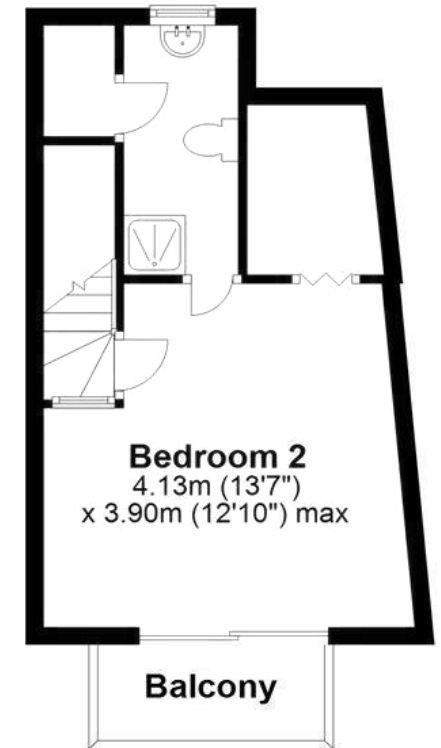
Second Floor

Approx. 38.3 sq. metres (412.0 sq. feet)



Third Floor

Approx. 26.2 sq. metres (282.1 sq. feet)



Total area: approx. 147.9 sq. metres (1591.6 sq. feet)

Outside

To the rear of the property accessed from the second bedroom is a good-sized paved courtyard seating area with power and, attractive stone walling providing a good degree of privacy. Steps lead up to a further elevated seating area enjoying views across the river.

Integral Garage.

A spacious garage with electric up-and-over door, light and power. There is also a useful WC cloakroom with wash hand basin. Steps lead up to a substantial storeroom, ideal as a workshop or boat storage area, with additional shelving to the rear.

Viewings

Strictly by appointment only through Millard Cook in Dartmouth. If you wish to visit Dartmouth by helicopter or yacht, please contact the office to discuss suitable helicopter landing sites, moorings and transportation within the Dartmouth area. If you are unable to travel to Dartmouth, Millard Cook provide private online viewings upon request



Millard Cook is an independent estate agency offering a bespoke service. The unique service is available 7 days a week. Please visit our website for more details [CLICK HERE](#)

Score	Energy rating	Current	Potential
92+	A		
81-91	B		
69-80	C	69 C	75 C
55-68	D		
39-54	E		
21-38	F		
1-20	G		

IMPORTANT NOTICE 1. These particulars are for guidance only. They are prepared and issued in good faith and fair description of the property. They do not constitute part of an offer or contract. 2. Any description or information given should not be relied on as a statement or representation of fact that the property or its services are in good condition. Millard Cook has no authority to make or give any representation or warranty whatsoever in relation to the property. 3. The photographs show only certain parts and aspects of the property at the time they were taken. CGI on images maybe used. Any areas, measurements or distances given are approximate only. 4. Descriptions of a property are inevitably subjective, and the descriptions contained are used in good faith as an opinion and not by way of statement of fact and queries need clarifying before viewing, please do not hesitate to contact Millard Cook. MONEY LAUNDERING REGULATIONS - To a sale being agreed, prospective purchasers will be required to produce identification documents to comply with Money Laundering regulations.