

DOWN PLACE, W6

£550,000

Leasehold

2

2

1

C

PROPERTY FEATURES

- Offering over 700sqft
- Long Lease (Over 100+ Years) with scope for Share of Freehold
- Lift Access & Concierge
- Two Double Bedrooms
- Excellent Transport Links
- Plenty of Amenities



PROPERTY FEATURES

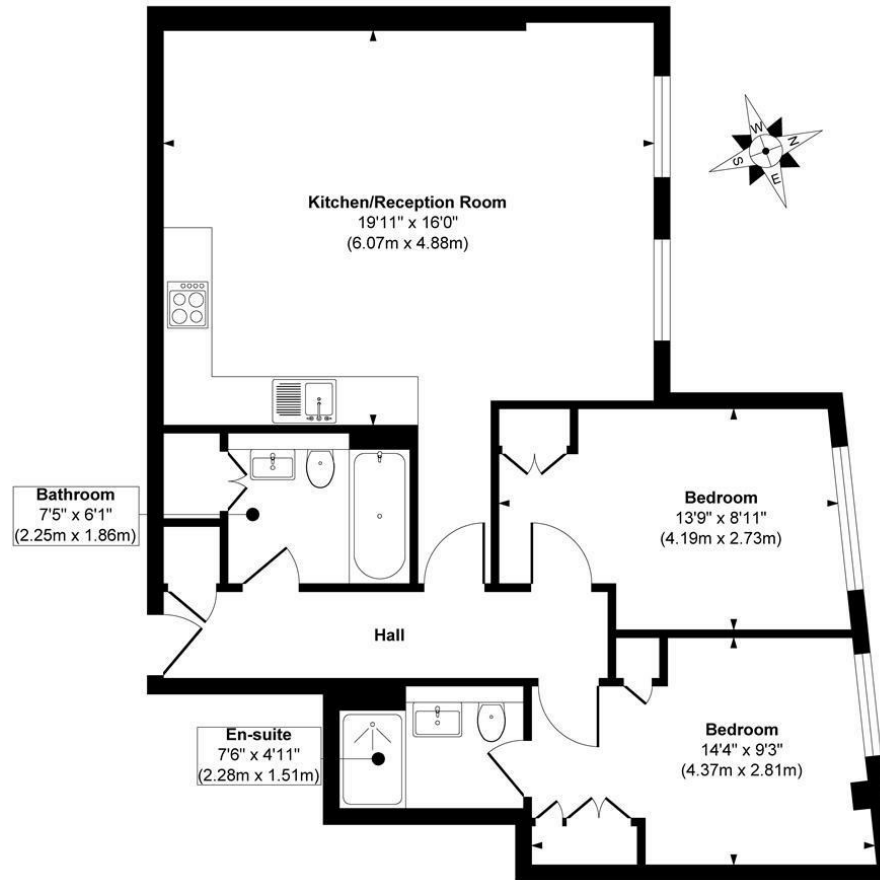
A modern, spacious two bedroom, two bathroom apartment situated in the heart of Hammersmith offering the perfect blend of immediate access to world class amenities with riverside living and some of West London's largest and best green spaces. Superbly kept by the current owners, this exceptional home is offered to the market with a long lease.

ALEXANDER STEER

Estate Agents



Federal House



Floor Plan

Approx. Gross Internal Floor Area 757 sq. ft / 70.39 sq. m

Illustration for identification purposes only, measurements are approximate, not to scale.

Produced by Elements Property



@ALEXANDERSTEERPROPERTY



ALEXANDER STEER

0203 822 0111

hello@alexandersteer.co.uk

158a Shepherds Bush Road, Hammersmith, London,
W6 7PB

All sizes are approximate. The Agent has not tested any apparatus, equipment, fixtures and fittings, or services and so cannot verify that they are in working order or fit for the purpose. A buyer is advised to obtain verification from their Solicitors or Surveyor. Photographs are for illustration purposes only and may depict items, which are not for sale or included in the sale price. References to tenure of a property are based upon Information supplied by the vendor. The agent has not had sight of the title documents, a buyer is advised to obtain verification from their solicitor.

Money Laundering Regulations 2003: Intending purchasers will be asked to produce identification, documentation at a later stage and we would ask for your co-operation in order that there will be no delay in agreeing the sale. These particulars are intended to give a fair description of the property only and are in no way guaranteed, nor do of any contract. They are issued on the express condition that all negotiations are conducted through Alexander Steer Estate Agents. All subject to contract and to being unsold.