



Guide Price
£425,000

Freehold

4x  3x  2x 

Barfrestone, Dover,
Kent, CT15

OVER 60?

Secure this property
for up to **59% less!**

Wards
Helping you move forwards



Main features

- Generous room sizes, ideal for families, guests, or home offices
- Brimming with historic charm
- In need of modernisation, a blank canvas to create a bespoke home
- Chain-Free sale
- Situated in the idyllic village of Barfrestone

Accommodation

SPLIT LEVEL GROUND FLOOR

- Entrance Hallway
- Dining Room: 16'2 x 9'6 (4.93m x 2.90m)
- Kitchen : 10'1 x 8'5 (3.08m x 2.57m)
- Utility Area : 6'2 x 6'1 (1.88m x 1.86m)
- Downstairs Cloakroom
- Shower Room
- Lounge : 14'7 x 10'5 (4.45m x 3.18m)
- Bedroom 4: 14'1 x 10'4 (4.30m x 3.15m)

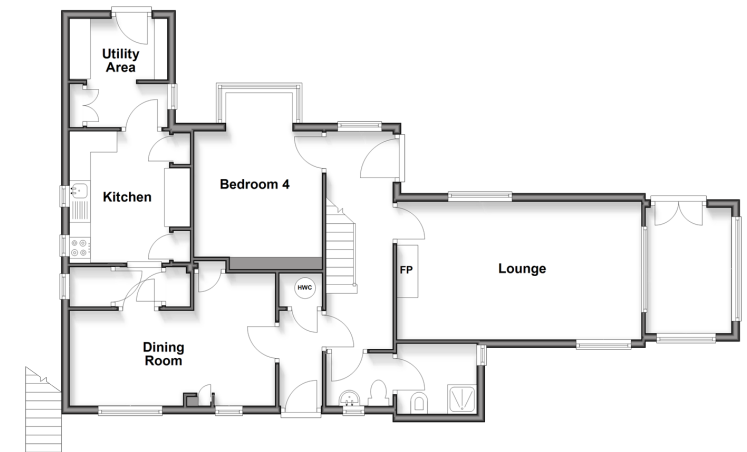
FIRST FLOOR

- Landing
- Bedroom 1 : 18'3 x 10'5 (5.57m x 3.18m)
- Bathroom
- Bedroom 2 : 11'2 x 10'3 (3.41m x 3.13m)
- Bedroom 3 : 15'4 x 8'7 (4.68m x 2.62m)
- En-Suite Bathroom: 8'7 x 5'4 (2.62m x 1.63m)
- Balcony
- Dining Area: 10'4 x 9'6 (3.15m x 2.90m)

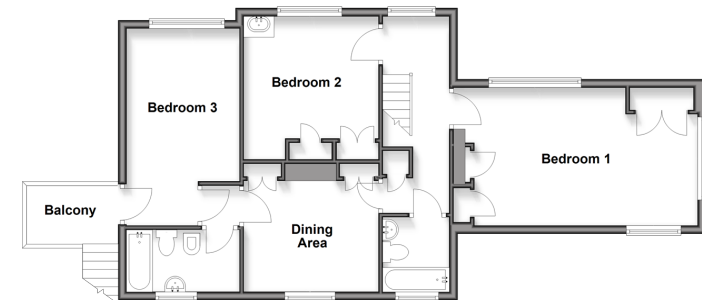
OUTSIDE

- Front Garden
- Rear Garden
- Off Road Parking
- Car Port

Split Level Ground Floor
Approx. 87.8 sq. metres (945.1 sq. feet)



First Floor
Approx. 70.1 sq. metres (754.1 sq. feet)



Unable to display material information. Please check with the branch for material information details for this property



10736093/20260420/TE/OV