

## Chestnut Grove New Malden KT3

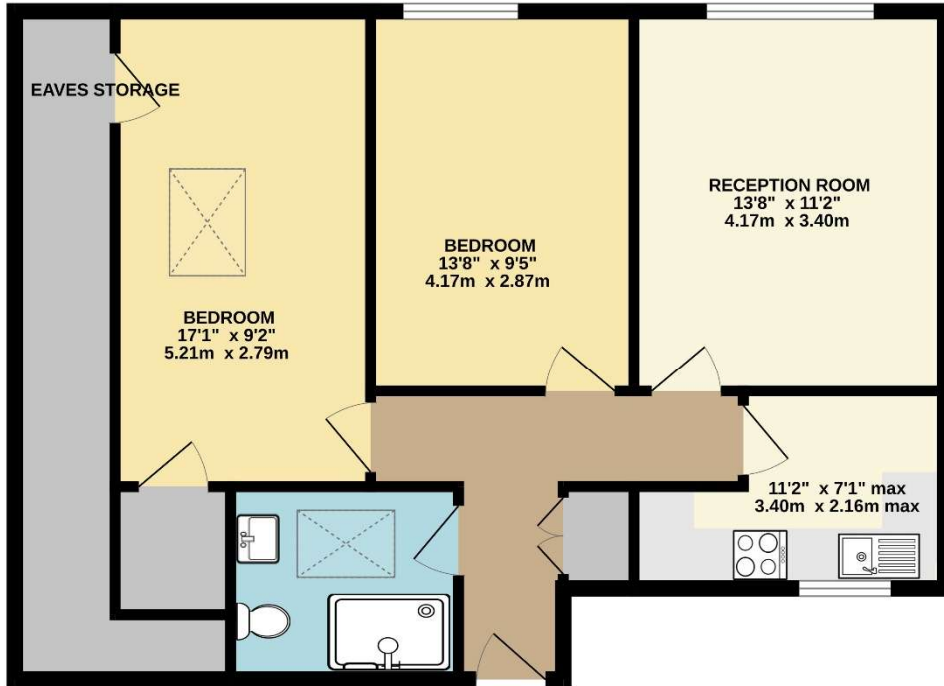


- **Two Double Bedrooms**
- **Good Size Living Room**
- **Modern Kitchen and Shower Room**
- **Private Parking**
- **Excellent Condition**
- **Very Central Location**

**Price £1,925 pcm**

A top (2nd) floor apartment which is well presented throughout. The accommodation comprises a good size living room, fitted kitchen with modern appliances including washer/dryer and dishwasher, two double bedrooms and a large shower room and there is also private parking to the rear. The property is located in the highly desirable "Groves" area with very easy and quick access to both the High Street and station and this would be a perfect home for a couple or single professional. The property is unfurnished and available mid April. Council tax band C. Security deposit (based on current asking price) £2,221. EPC rating C.

SECOND FLOOR  
759 sq.ft. (70.5 sq.m.) approx.



TOTAL FLOOR AREA: 759 sq.ft. (70.5 sq.m.) approx.  
Whilst every attempt has been made to ensure the accuracy of the floorplan contained here, measurements of doors, windows, rooms and any other items are approximate and no responsibility is taken for any error, omission or mis-statement. This plan is for illustrative purposes only and should be used as such by any prospective purchaser. The services, systems and appliances shown have not been tested and no guarantee as to their operability or efficiency can be given.  
Made with Metropix ©2022





