



Twitchell Road
Great Missenden | Buckinghamshire

£650,000
Freehold



Jeremy Swan

Twitchell Road

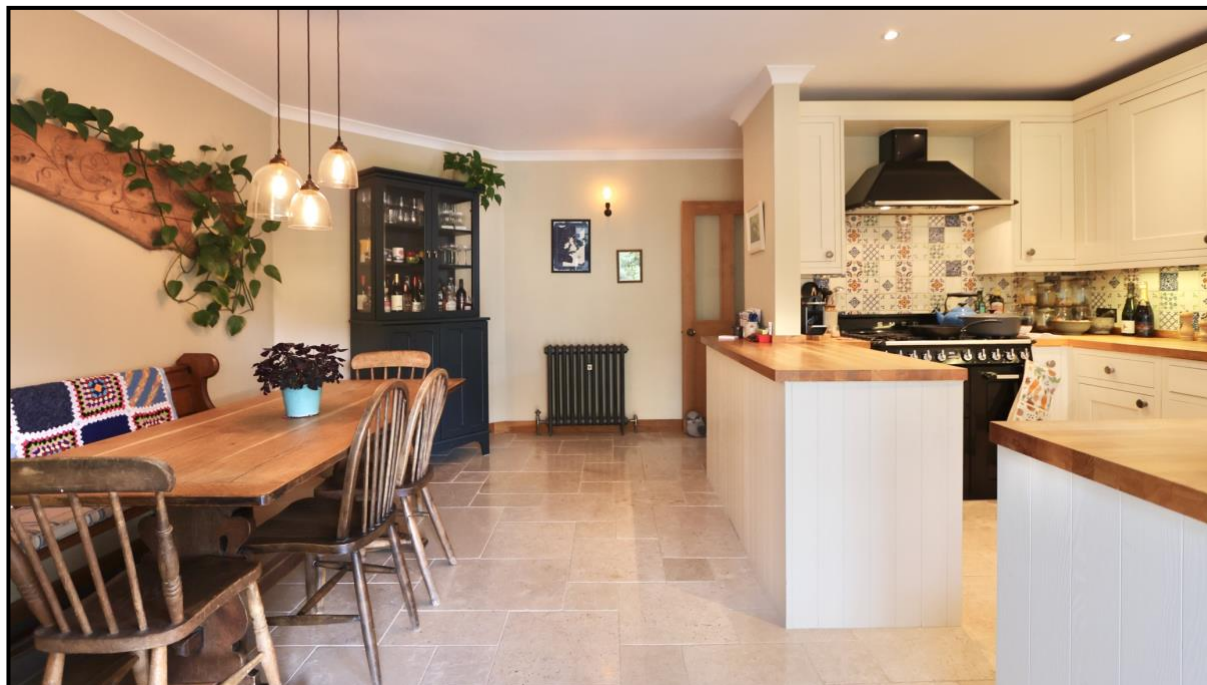
Great Missenden | Buckinghamshire

We are pleased to bring to market this immaculately presented 3-bedroom semi-detached home situated in the heart of the village in a highly desirable private cul-de-sac, within short walking distance of the local High Street with its independent shops, pubs and restaurants as well as the train station with a direct line into London Marylebone.

Beautifully decorated, this turnkey property is perfect for regular commuters and downsizers alike. Viewing is highly recommended.

Some of its many pleasing features include:

- Double glazing and gas-fired central heating
- Beautifully finished family bathroom with rolltop slipper bath and panelling
- Short walking distance from the high street and railway station into London Marylebone
 - Landscaped south-facing rear garden
 - Driveway with off-street parking for two cars
 - Sole agent



Ground Floor

Entrance hall – engineered oak wood floor, stairs rising to the first floor, cast iron column Victorian style radiator.

Front reception room – engineered oak wood floor, radiator, open fireplace with inset cast iron multi-fuel stove with a wooden mantelpiece and granite hearth.

Open plan kitchen/dining/garden room – a beautiful open planned area, kitchen comprising of matching base units and wall cabinets, wooden worktops with inset Belfast sink with mixer tap over and single drainer, integrated Bosch dishwasher, Smeg gas range with six-ring gas hob, integrated electric twin fan ovens and grill with extractor hood over. Wall-mounted Worcester Bosch gas central combination heating boiler, downlighting and spotlights. The open plan dining area features two cast iron Victorian style column radiators, wall lights, limestone tiled floor supplied by Mandarin Stone, steps down to a vaulted garden room with same limestone floor, cast iron column Victorian style radiator, two Velux windows, wall light, double glazed double doors to rear south-facing garden.

Downstairs cloakroom/ utility room – white low-flush W.C. base units with wood effect top with inset stainless steel sink unit with single drainer and mixer tap, plumbing for washing machine, space for a condensing tumble dryer.

First Floor

Landing – fitted carpet and stairs rising to the top floor, radiator, storage cupboard, spotlights.

Family bathroom/W.C – Burlington fitted suite, freestanding double-ended rolltop slipper bath with centre Victorian mixer taps with shower attachment, low-flush W.C, pedestal handwash basin with mixer tap, large shower cubicle with rainwater showerhead and handheld shower, Victorian style column radiator with chrome towel rail surround, Karndean wood effect luxury floor, panelling to dado level, extractor fan, spotlights.

Bedroom 2 – fitted carpet, radiator.

Principal bedroom – fitted carpet, radiator, cast iron fireplace with hearth (not currently being used)

Top Floor

Dual aspect bedroom 3 – under eave storage, radiator, panelling, stripped wood floorboards.

Outside

Own gravel driveway – providing off-street parking for two cars

Side pedestrian access – to the rear garden with storage space for bins.

Landscaped south-facing rear garden – with large sun terrace, outside tap, outside light, well-stocked flower and shrub borders, fruit trees and timber shed.





64 High Street, Great Missenden, Buckinghamshire HP16 0AN Tel: 01494 890990
 Email: info@jeremyswan.co.uk To register, please visit our website at www.jeremyswan.co.uk.
 To unsubscribe, please log in to your account on our website and follow the instructions.



All due care has been taken in the preparation of these particulars. However no responsibility is accepted for errors, nor can any claim be entertained for any expenses or inconvenience caused by reason of the withdrawal of particulars properties from the market by previous disposal or otherwise. All properties are offered subject to contract and being available on receipt of offers. The agent has not tested any apparatus, equipment, fixtures and fittings or services and so cannot verify that they are in working order or fit for the purpose. A buyer is advised to obtain verification from their Solicitor or Surveyor. References to the tenure of a property are based on information supplied by the seller. The agent has not had sight of the title documents, buyers are advised to obtain verification from their Solicitor. Room measurements have been made using a sonic tape. Complete accuracy cannot be guaranteed and therefore the room sizes given should be regarded as approximate. Photographs are for illustration only, may have been taken using wide angle lenses, and may depict items which are not for sale or not included in the sale of the property.

