



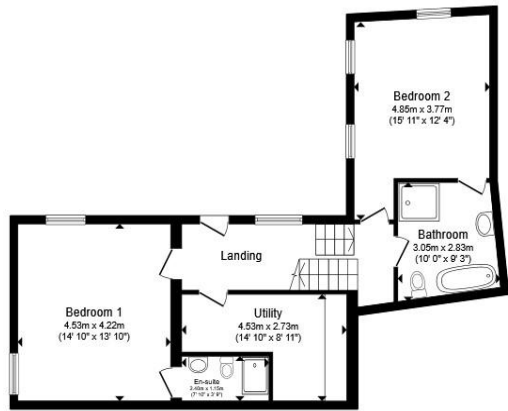
Leg Square, Shepton Mallet BA4 5LQ

welcome to

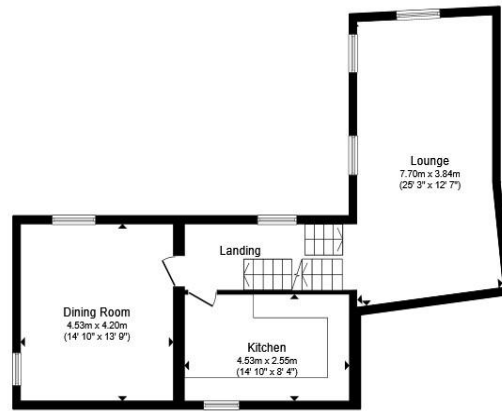
Leg Square, Shepton Mallet

Renovated character home with four bedrooms and multiple reception rooms, opening to a charming courtyard. Includes a self-contained one-bedroom annex ideal for guests or income.

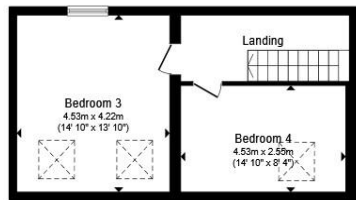




Ground Floor



First Floor



Second Floor

Total floor area 177.9 m² (1,915 sq.ft.) approx

This floor plan is for illustrative purposes only. It is not drawn to scale. Any measurements, floor areas (including any total floor area), openings and orientation are approximate. No details are guaranteed, they cannot be relied upon for any purpose and they do not form part of any agreement. No liability is taken for any error, omission or misstatement. A party must rely upon its own inspection(s). Powered by www.propertybox.io



Main House

Ground Floor

Entrance Hall

Utility Room

14' 10" x 8' 11" (4.52m x 2.72m)

Bedroom One

14' 10" x 13' 10" (4.52m x 4.22m)

En-Suite

7' 10" x 3' 8" (2.39m x 1.12m)

Bedroom Two

15' 11" x 12' 4" (4.85m x 3.76m)

Bathroom

10' x 9' 3" (3.05m x 2.82m)

First Floor

Landing

Kitchen

14' 10" x 8' 4" (4.52m x 2.54m)

Dining Room

14' 10" x 13' 9" (4.52m x 4.19m)

Lounge

25' 3" x 12' 7" (7.70m x 3.84m)

Second Floor

Landing

welcome to

Leg Square, Shepton Mallet

- Character Property Dating Back To The 1720's
Converted In 1940's
- Fully Renovated & Updated To An Impressive
Standard
- Annex Accommodation Offering A Rental
Opportunity/Additional Living Space
- Four Bedrooms & A One Bedroom Self Contained
Annex
- Multiple Reception Rooms & Private Courtyard Style
Garden

Tenure: Freehold EPC Rating: D

Council Tax Band: D



Please note the marker reflects the
postcode not the actual property

view this property online allenandharris.co.uk/Property/WEL106375



Property Ref:
WEL106375 - 0004

1. MONEY LAUNDERING REGULATIONS Intending purchasers will be asked to produce identification documentation at a later stage and we would ask for your co-operation in order that there is no delay in agreeing the sale. 2. These particulars do not constitute part or all of an offer or contract. 3. The measurements indicated are supplied for guidance only and as such must be considered incorrect. Potential buyers are advised to recheck measurements before committing to any expense. 4. We have not tested any apparatus, equipment, fixtures or services and it is in the buyers interest to check the working condition of any appliances. 5. Where an EPC, or a Home Report (Scotland only) is held for this property, it is available for inspection at the branch by appointment. If you require a printed version of a Home Report, you will need to pay a reasonable production charge reflecting printing and other costs. 6. We are not able to offer an opinion either written or verbal on the content of these reports and this must be obtained from your legal representative. 7. Whilst we take care in preparing these reports, a buyer should ensure that his/her legal representative confirms as soon as possible all matters relating to title including the extent and boundaries of the property and other important matters before exchange of contracts.


allen & harris



01749 676067



Wells@allenandharris.co.uk



15 Sadler Street, WELLS, Somerset, BA5 2RR



allenandharris.co.uk