



Beechfield Road, Hemel Hempstead, HP1 1PW

Offers In Excess Of £750,000

Situated in the highly sought after Beechfield Road in Boxmoor is this spacious and extended semi detached family home with potential for further extension STPP and with potential to convert to a separate annex. Boasting four bedrooms, modern fitted kitchen/diner, lounge area, sitting room, family room, utility room, downstairs shower room, additional loft room with WC, gas central heating, double glazing and off road parking.

Located next to Boxmoor and within easy reach of Boxmoor Village with its local shops, restaurants, public houses, Hemel Hempstead School, cricket club and pitches, Hemel Hempstead mainline station with access to London Euston in only 30 minutes, Hemel Hempstead town centre and the M1, M25 and A41 road links.

Nestled on the charming Beechfield Road in the desirable area of Boxmoor, this extended semi-detached house offers a perfect blend of space and modern living. Spanning an impressive 1,432 square feet, the property boasts four well-proportioned bedrooms and the potential to convert to the side to make an annex.

Upon entering, you are welcomed by three inviting reception rooms, each offering a unique space for relaxation and entertainment. The modern fitted kitchen/diner is a highlight of the home, providing an ideal setting for family meals and gatherings. The convenience of a utility room and a downstairs shower room adds to the practicality of this delightful residence.

The property benefits from gas central heating and double glazing, ensuring warmth and comfort throughout the year. Furthermore, there is potential for further extension, subject to planning permission, allowing you to tailor the home to your specific needs and desires.

With its excellent location, this semi-detached house is perfect for families seeking a spacious and adaptable home in a friendly neighbourhood. Don't miss the opportunity to make this wonderful property your own.

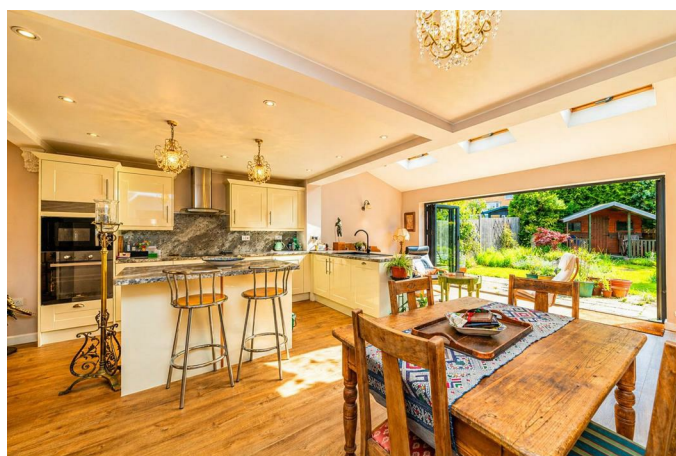
Entrance Hall



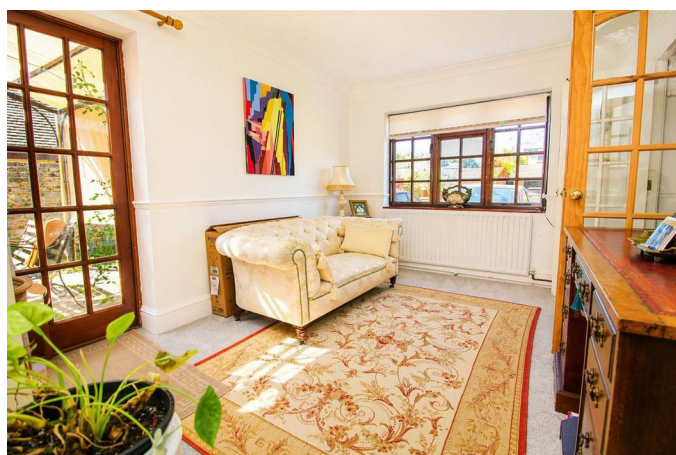
Lounge Area 11'6 x 11'3 (3.51m x 3.43m)



Modern Fitted Kitchen/Diner 18'9 max x 11'1 (5.72m max x 3.38m)



Study 10'2 x 8'0 (3.10m x 2.44m)



Family Room 12'7 x 9'5 (3.84m x 2.87m)



Landing 14'5 x 7'1 (4.39m x 2.16m)



Utility Room



Bedroom One 11'7 x 11'1 (3.53m x 3.38m)



Shower Room



Bedroom Two 11'7 max x 8'4 max (3.53m max x 2.54m max)



Bedroom Three 8'5 x 7'6 (2.57m x 2.29m)



Cloakroom



Bathroom 9'5 x 9'4 (2.87m x 2.84m)



Front Garden

Rear Garden



Loft Room 17'6 x 11'4 (5.33m x 3.45m)

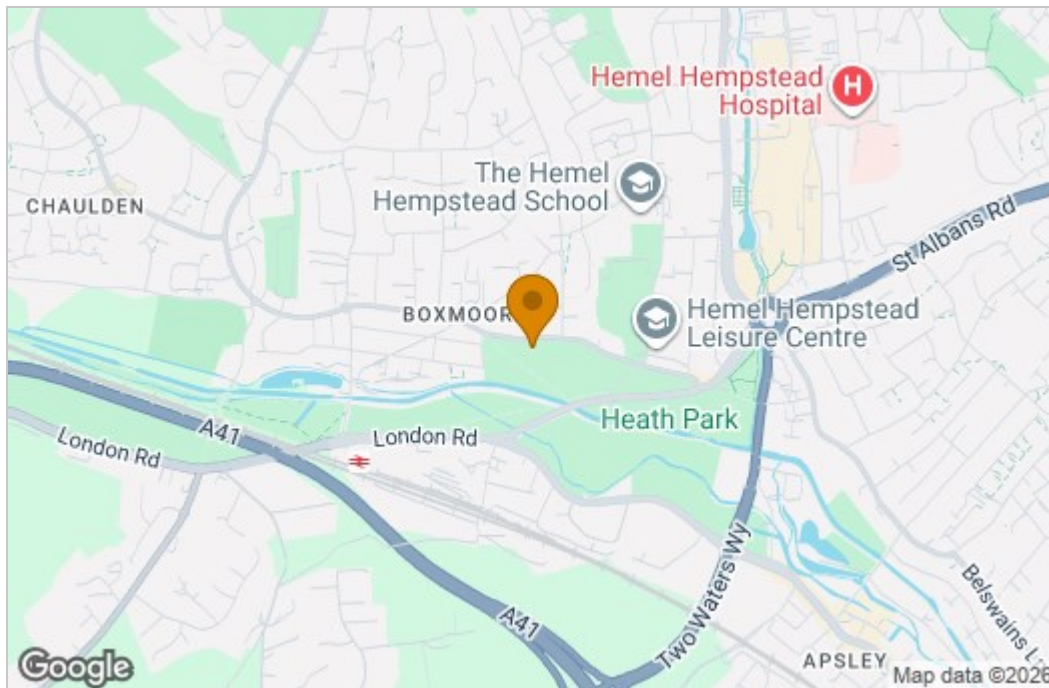


Floor Plan

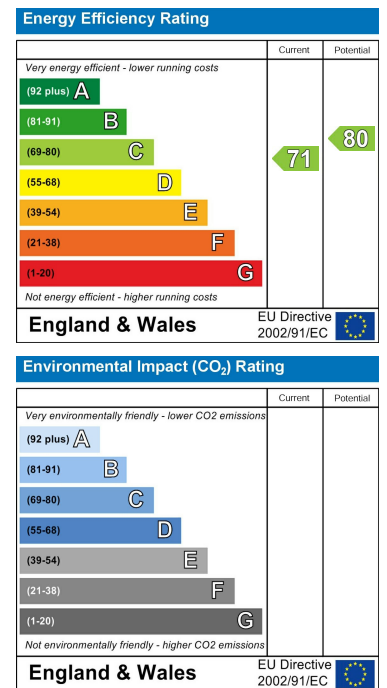


This floor plan is for illustrative purposes only. It is not drawn to scale. Any measurements, floor areas (including any total floor area), openings and orientations are approximate. No details are guaranteed, they cannot be relied upon for any purpose and do not form any part of any agreement. No liability is taken for any error, omission or misstatement. A party must rely upon its own inspection(s). Powered by www.Propertybox.io

Area Map



Energy Efficiency Graph



These particulars, whilst believed to be accurate are set out as a general outline only for guidance and do not constitute any part of an offer or contract. Intending purchasers should not rely on them as statements of representation of fact, but must satisfy themselves by inspection or otherwise as to their accuracy. No person in this firm's employment has the authority to make or give any representation or warranty in respect of the property.