



Alexandre Boyes

01892 354080  
www.alexandre-boyes.co.uk



8 Woodbury Park Gardens, Tunbridge Wells, TN4 9JT



# Alexandre Boyes

Montpelier Lodge, 48 Mount Ephraim, Tunbridge Wells, Kent TN4 8AU

8 Woodbury Park Gardens, Tunbridge Wells, TN4 9JT

- Entrance Hall
- Cloakroom
- Sitting Room
- Dining Room
- Kitchen/Breakfast Room
- Utility Room
- Five Bedrooms
- Study
- Ensuite Shower Room
- Family Bathroom
- Garage
- Garden
- Parking

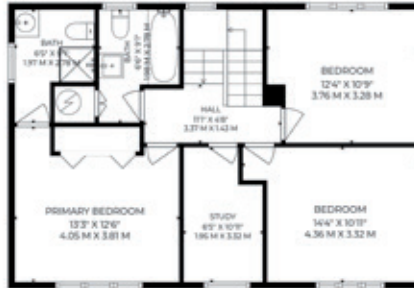


A well proportioned detached five bedroom house arranged over three floors, located in this quiet private road within walking distance of local schools, shops and the main line station. A viewing is highly recommended.



Tunbridge Wells has an excellent range of educational, leisure and shopping facilities including the Royal Victoria Place shopping centre and Pantiles. There are a selection of highly regarded schools in the area both at primary and secondary level, many within walking distance. Tunbridge Wells main line station benefits from regular services to the City and West End in under an hour by fast train

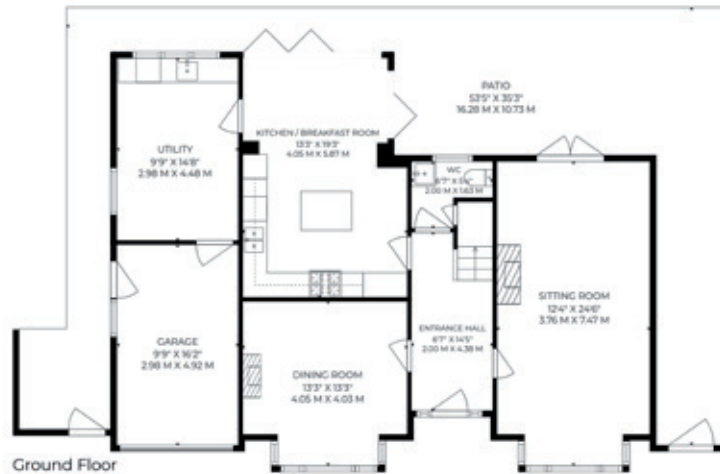




First Floor



Second Floor



Ground Floor

**Woodbury Park Gardens, TN4**  
**5 bedroom detached house**



**Approx. Internal Area**  
**2200 Sqft / 204 Sqm**

Illustration for identification purposes only.  
Measurements are approximate. Not to scale.  
Produced by ricksouza-photo.pro for Alexandre Boyes

**IMPORTANT NOTES**

1. Every care has been taken in the preparation of these particulars but their accuracy is not guaranteed and they do not form part of any contract. Descriptions are given in good faith and as an opinion of the Agents - not as a statement of fact. 2. Measurements are approximate and any reference to any particular use of any part of the property or to alterations is not intended to imply that planning or building regulations or other consents have been obtained. 3. We have not tested any appliances, services, heating systems, fixtures or fittings and so cannot guarantee they are in good working order. Prospective purchasers should undertake their own tests, enquiries or surveys before entering into any commitment. Photographs are reproduced for general information and it must not be inferred that any item shown is included in the sale. 4. These particulars are issued on the understanding that all viewings and negotiations are conducted through the Agents.

