



The Cornfields, Bishops Cleeve, Cheltenham, GL52 7YQ

Fixed Price £280,000

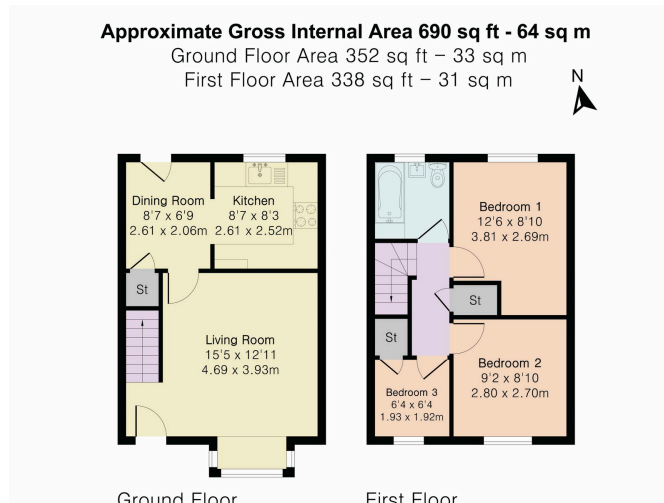
3 1 2



- Three Bedrooms
- End Of Terrace
- Two Allocated Parking Places
- Side Access
- Cul De Sac Position
- Landscaped Garden
- Convenient located To Village Amenities
- Kitchen/Diner



Nestled in a cul-de-sac, this delightful end-of-terrace property combines character, comfort, and convenience. With its inviting exterior, thoughtfully designed interiors, and a beautifully landscaped garden, it's the perfect home for first-time buyers, young families, or downsizers.



PINK PLAN
 Floor plan produced in accordance with RICS Property Measurement 2nd Edition. Although Pink Plan Ltd ensures the highest level of accuracy, measurements of doors, windows and rooms are approximate and no responsibility is taken for error, omission or misstatement. These plans are for representation purposes only and no guarantee is given on the total square footage of the property within this plan. The figure form is for initial guidance only and should not be relied on as a basis of valuation.



Energy Efficiency Rating		
	Current	Potential
Very energy efficient - lower running costs		
(92 plus) A		
(81-91) B		89
(69-80) C		
(55-68) D	57	
(39-54) E		
(21-38) F		
(1-20) G		
Not energy efficient - higher running costs		
England & Wales	EU Directive 2002/91/EC	



Elliot Oliver Sales
 101 Promenade, Cheltenham GL50 1NW
 01242 321091
 www.eosales.co.uk

