



Coventry House, Piccadilly Circus, SW1Y 4HA

£807 Per Week



1



1



1



B



£807 Per Week

Coventry House

Piccadilly Circus, SW1Y 4HA

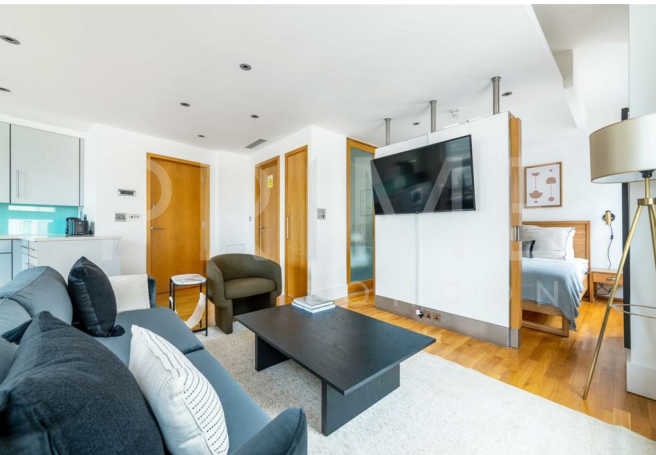
- One bedroom apartment
- An ideal pied a terre
- Furnished to a high standard
- Views through to Leicester Square

A larger than average fourth floor apartment (with lift) and with views through to Leicester Square, available for lease through Prime London.

The property is conveniently located for the West End and is within easy reach of the City, making this an ideal pied a terre or Central home.

Numerous theatres, eateries and shops are available within moments of the property and Coventry House is 52 metres from Piccadilly Circus underground station (Piccadilly and Bakerloo lines). Close by is Charing Cross overland station which is 500 metres away (Northern and Bakerloo underground lines).

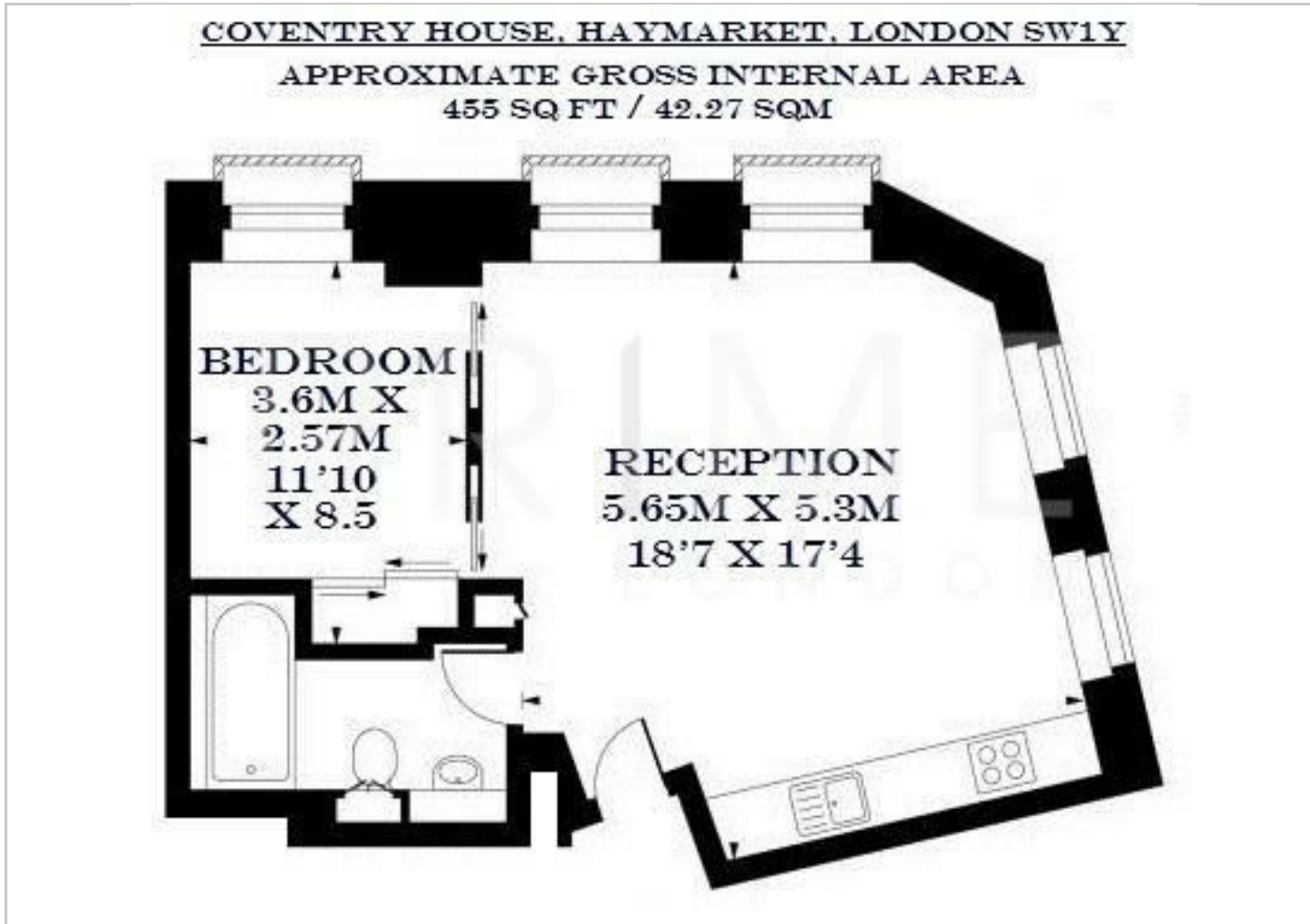
Various bus routes on Regents Street, Piccadilly and Oxford Street give the area easy access to other parts of London.







Floor Plans



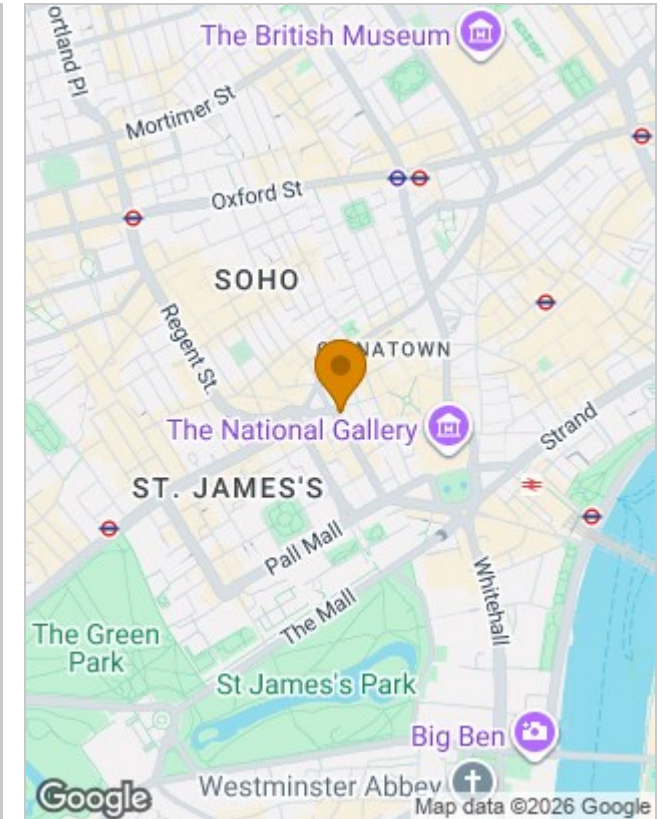
Viewing

By appointment. Contact us if you wish to arrange a viewing appointment for this property, or require further information.

The particulars are set out as a general outline only for the guidance of intended purchasers or lessees, and do not constitute, any part of a contract. Nothing in these particulars shall be deemed to be a statement that the property is in good structural condition or otherwise nor that any of the services, appliances, equipment or facilities are in good working order. Purchasers should satisfy themselves of this prior to purchasing.

21 Grosvenor Gardens, Belgravia, London SW1W 0BP | Palace View, 131 Lambeth Road, London SE1 7BT
 Tel: 0207 052 1075 | 0207 928 6663 Email: Office@PrimeLondonResidential.com www.PrimeLondonResidential.com

Location Map



Energy Performance Graph

