

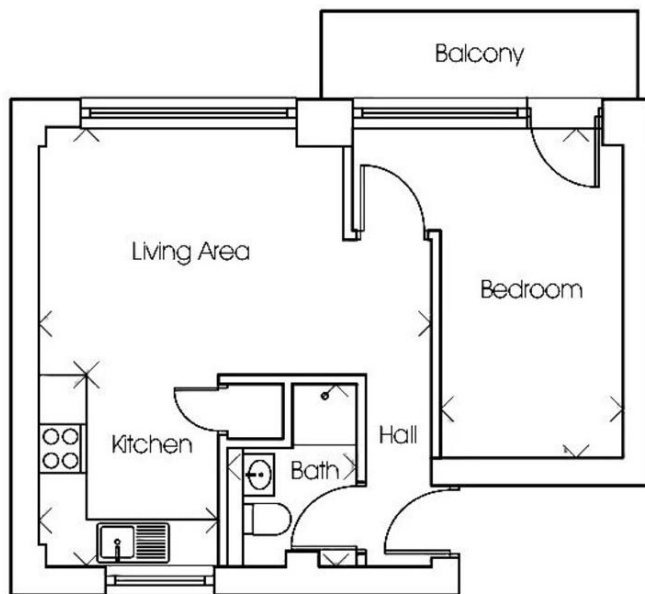


**BURNE JONES HOUSE 11-12 BENNETTS HILL
BIRMINGHAM, B2 5RS**

£900PCM

Sought-After Central Location | Open-Plan Living Area | Spacious Double Bedroom
| Prime Bennetts Hill Location | Walking Distance to Shops & Restaurants |
Excellent Transport Links | Lift Access | Secure Residential Building

Davidson



Living Area
4.99m × 3.16m
16'4" × 10'4"

Kitchen
2.43m × 2.29m
8'0" × 7'6"

Bedroom
4.21m × 2.34m
13'10" × 7'8"

Bathroom
2.33m × 1.65m
7'8" × 5'5"

Score	Energy rating	Current	Potential
92+	A		
81-91	B		
69-80	C	69 C	69 C
55-68	D		
39-54	E		
21-38	F		
1-20	G		

Davidson

OFFICE
22 Harborne Road
Birmingham
West Midlands
B15 3AA

0121 455 7727
info@davidsonstates.co.uk
www.davidsonstates.co.uk

Agents Note: Whilst every care has been taken to prepare these particulars, they are for guidance purposes only. All measurements are approximate and are for general guidance purposes only and whilst every care has been taken to ensure their accuracy, they should not be relied upon and potential buyers/tenants are advised to recheck the measurements