

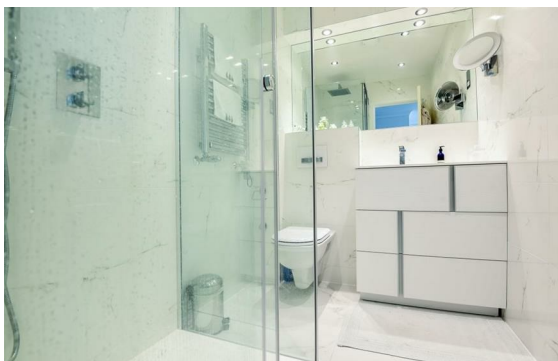
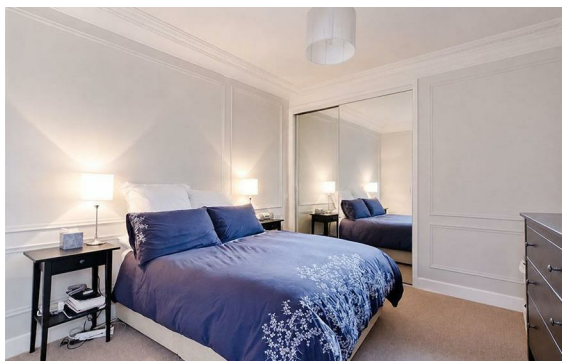


New Cavendish Street, Marylebone, London, W1G

Rent £1,035 PCM

2 Bed | 1 Bath | 1 Reception

Please call us on 020 7724 2233 or email us info@newingtonstates.com to book a viewing.



60 Upper Montagu Street
London
W1H 1SN

020 7724 2233

info@newingtonestates.com

A beautifully presented flat offering bright, well-balanced living space, combining classic proportions with modern finishes in one of central London's most desirable settings. The apartment features a generous double-aspect reception room filled with natural light, a contemporary kitchen, double bedroom, study room, and a modern bathroom.

Ideally positioned close to Marylebone, Fitzrovia, and the West End, with Regent's Park just moments away and excellent transport links within easy reach.

EPC Rating: C

Energy Efficiency Rating: C

Agents Note: Whilst every care has been taken to prepare these particulars, they are for guidance purposes only. All measurements are approximate and are for general guidance purposes only and whilst every care has been taken to ensure their accuracy, they should not be relied upon and potential buyers/tenants are advised to recheck the measurements.

<http://www.newingtonestates.com>