



COURT GARDEN HOUSE, ITTON



COURT GARDEN HOUSE, ITTON, CHEPSTOW, NP16 6BR

An exceptional country home in a remarkable setting,
just ten minutes from Chepstow and five minutes from the
sought after village of Shirenewton.



Local Authority: Monmouthshire County Council

Council Tax band: H

Tenure: Freehold

Large conservatory, outbuildings with workshop, stables and outdoor manege

Guide Price: £1,550,000



PROPERTY

Court Garden House is approached via its own private driveway and electronic gates, revealing an enthralling home in a wonderfully secluded and unexpected setting.

This unique family residence sits within the original stone walled kitchen gardens of an historic manor, creating an atmosphere that is both steeped in heritage yet enriched by the comfort, efficiency and thoughtful layout of a more modern build. For example, hardwood double glazed windows throughout ensure year round warmth and energy performance without compromising the charm of the surroundings.

The property offers generous and flexible living space, ideal for family life, entertaining and multi generational living.







DIRECTIONS AND LOCAL AREA

From the Old Severn Bridge, exit at Junction 2 towards Chepstow on the Wye Valley Link Road. At the High Beech roundabout, continue straight and follow St Lawrence Road to the roundabout at the first entrance to Chepstow Racecourse.

Take the first left onto Itton Road. After approximately two miles, turn left signposted Itton Church. The driveway to Court House Gardens is immediately on the left after the church.

Itton is known for walking, wildlife, and wide views across the countryside. The area's countryside links into the wider Wye Valley Area of Outstanding Natural Beauty, making it popular for outdoor activities.

A good selection of schools are accessible, including: Shirenewton Primary School, Chepstow School, Haberdashers' Monmouth School, Dean Close St John's and Wyedean School & Sixth Form.







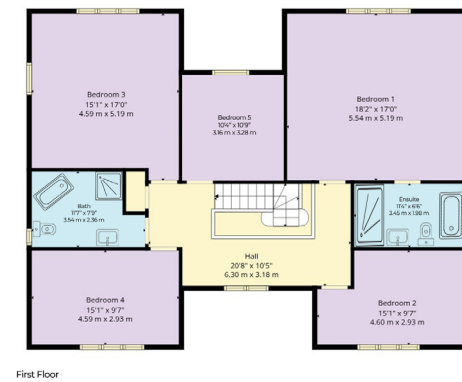
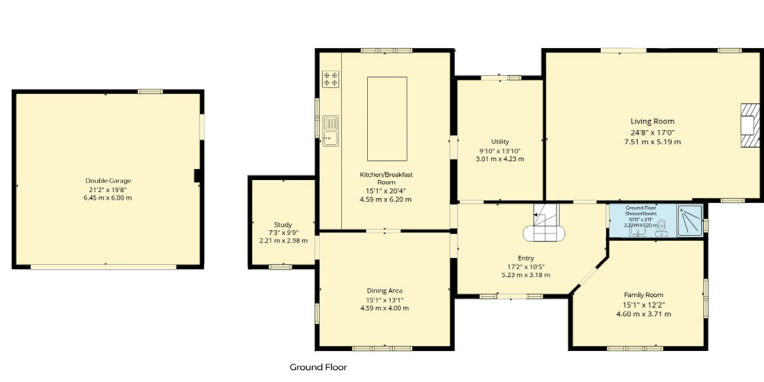
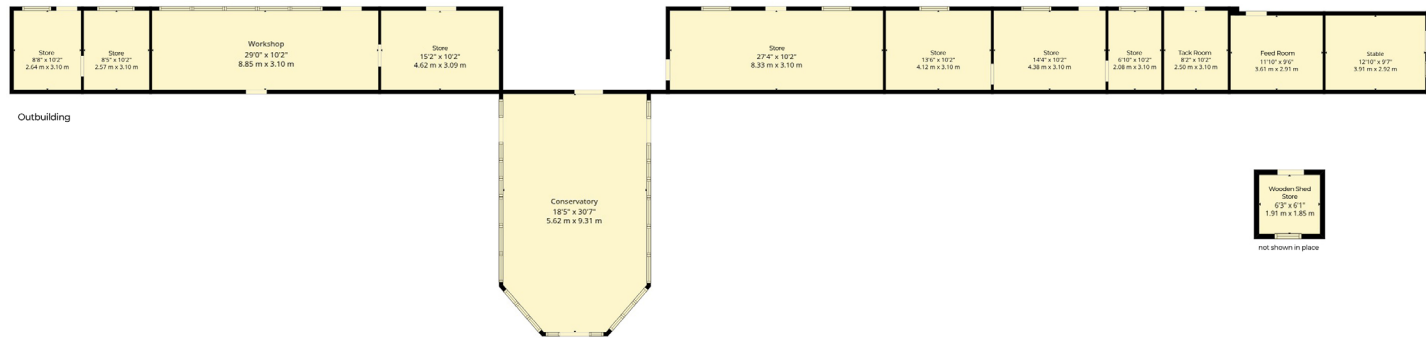
OUTSIDE

The grounds, extending to circa two acres and are a captivating blend of mature planting, hidden corners and beautifully tended spaces, including: A marvellous, heated Victorian conservatory; secret garden based around an attractive water feature; grass tennis court; a manège and stable, with a separate 'green lane' access.

Within the grounds sits the original gardener's cottage and office, accompanied by a long run of well maintained workshops and outbuildings. These offer exceptional scope for guest accommodation; holiday lets; home offices or studios. Subject to the necessary consents, there is also potential to extend the principal residence into the roof space or into the double garage. To note, we are advised there are rights of way across Itton Court fields for trekking.







Main House Total: 3261 sq. ft, 303 m2

Total: 6270 sq. ft 582 m2

Court Garden House, Itton, Chepstow, Monmouthshire, NP16 6BR

All Measurements, Including Floor Areas, Are Approximate And For Illustrative Purposes Only. @propertylaine.co.uk



This plan is for layout guidance only. Not drawn to scale unless stated. Windows and door openings are approximate. Whilst every care is taken in the preparation of this plan, please check all dimensions, shapes and compass bearings before making any decisions reliant upon them. (ID767266)



Robin Engley

0117 317 1999

robin.engley@knightfrank.com

Knight Frank Bristol

1 The Mall, Clifton, Bristol, BS8 4DP

[knightfrank.co.uk](https://www.knightfrank.co.uk)

Your partners in property

1. Particulars: These particulars are not an offer or contract, nor part of one. You should not rely on statements given by Knight Frank in the particulars, by word of mouth or in writing ("information") as being factually accurate about the property, its condition or its value. Neither Knight Frank nor any joint agent has any authority to make any representations about the property, and accordingly any information given is entirely without responsibility on the part of Knight Frank. 2. Material Information: Please note that the material information is provided to Knight Frank by third parties and is provided here as a guide only. While Knight Frank has taken steps to verify this information, we advise you to confirm the details of any such material information prior to any offer being submitted. If we are informed of changes to this information by the seller or another third party, we will use reasonable endeavours to update this as soon as practical. 3. Photos, Videos etc: The photographs, property videos and virtual viewings etc. show only certain parts of the property as they appeared at the time they were taken. Areas, measurements and distances given are approximate only. 4. Regulations etc: Any reference to alterations to, or use of, any part of the property does not mean that any necessary planning, building regulations or other consent has been obtained. A buyer must find out by inspection or in other ways that these matters have been properly dealt with and that all information is correct. 5. Fixtures and fittings: A list of the fitted carpets, curtains, light fittings and other items fixed to the property which are included in the sale (or may be available by separate negotiation) will be provided by the Seller's Solicitors. 6. VAT: The VAT position relating to the property may change without notice. 7. To find out how we process Personal Data, please refer to our Group Privacy Statement and other notices at <https://www.knightfrank.com/legals/privacy-statement>.

Particulars dated June 2026. Photographs dated June 2026. All information is correct at the time of going to print. Knight Frank is the trading name of Knight Frank LLP. Knight Frank LLP is a limited liability partnership registered in England and Wales with registered number OC305934. Our registered office is at 55 Baker Street, London W1U 8AN. We use the term 'partner' to refer to a member of Knight Frank LLP, or an employee or consultant. A list of members names of Knight Frank LLP may be inspected at our registered office. If you do not want us to contact you further about our services then please contact us by either calling 020 3544 0692, email to marketing.help@knightfrank.com or post to our UK Residential Marketing Manager at our registered office (above) providing your name and address.

