



Guide Price
£650,000

Freehold

3x  2x  1x 

**Channel View Road,
Woodingdean, Brighton,
East Sussex, BN2**

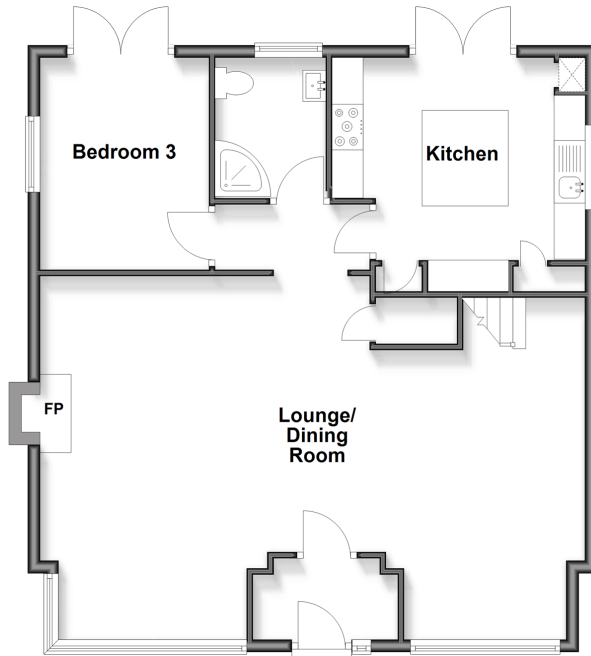
OVER 60?

Secure this property
for up to **59% less!**

cubitt & west
Helping you move forwards

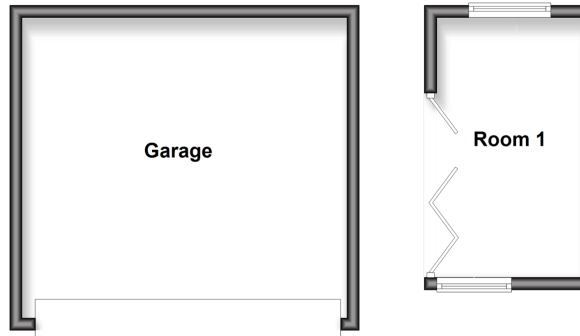
Ground Floor

Approx. 81.0 sq. metres (871.3 sq. feet)



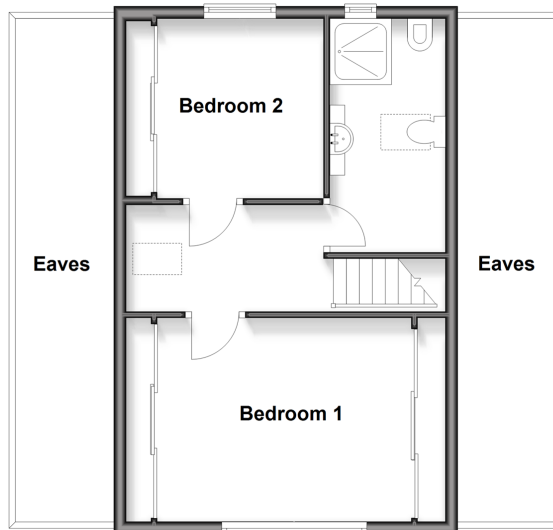
Outbuildings

Approx. 35.0 sq. metres (376.2 sq. feet)



First Floor

Approx. 41.2 sq. metres (443.3 sq. feet)



Accommodation

GROUND FLOOR

Porch

Lounge/Dining Room : 28'2 x 18'2 (8.59m x 5.54m)

Kitchen: 12'6 x 11'10 (3.81m x 3.61m)

Bedroom 3: 11'0 x 8'11 (3.36m x 2.72m)

Shower Room

FIRST FLOOR

Landing

Bedroom 1: 12'5 x 10'9 (3.79m x 3.28m)

Bedroom 2: 9'1 x 8'4 (2.77m x 2.54m)

Shower Room

Eaves

OUTBUILDINGS

Garage

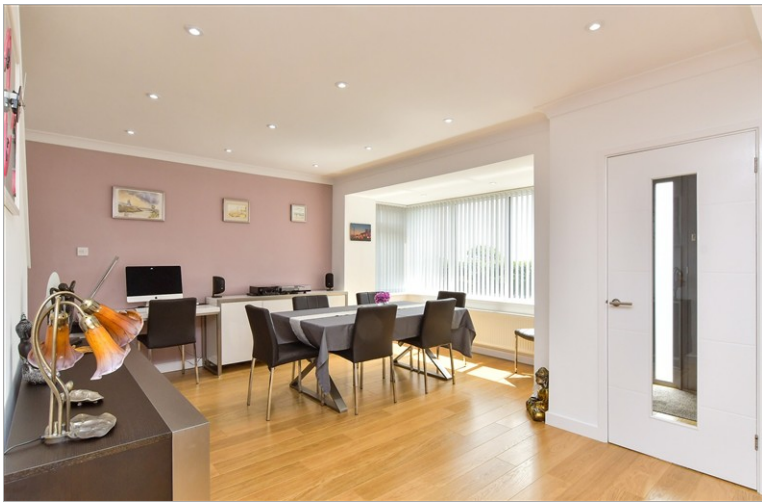
Room 1

OUTSIDE

Front and Rear Gardens

Log Shed

Blocked Paved Driveway



Main features

- A wow factor home, contemporary in style, stunning views to the South Downs & out to sea
- Open plan living area, all bedrooms are double in size, eaves storage
- Landscaped gardens to front & rear, summer house/home office, log shed
- Double garage & block paved driveway
- No onward chain



Nearest Schools

Primary Schools: Woodingdean Primary 0.4 miles, Rudyard Kipling Primary 1.3 miles

Secondary Schools: Downs View Special School, City College Brighton and Hove 2.3 miles.



Transport Information

Train Stations: Moulsecoomb 2.5 miles, London Road 2.9 miles, Brighton 2.9 miles



Address

Channel View Road, Woodingdean, Brighton, East Sussex, BN2



Directions

For directions to this property please contact us.



cubitt&west
Helping you move forwards

Call Woodingdean Branch 01273 606121 ■ cubittandwest.co.uk



■ Legal advice should be taken to verify fixtures/fittings, planning, alterations and/or lease details ■ Appliances & services are untested, dimensions are approximate and floor plans are not to scale
■ Through a Homewise Home For Life Plan people aged 60+ can secure this property for up to 59% less, by purchasing a Lifetime Lease



32508198/20260122/KK/JON