



## Duchess Walk, SE1

£3,575 Per week

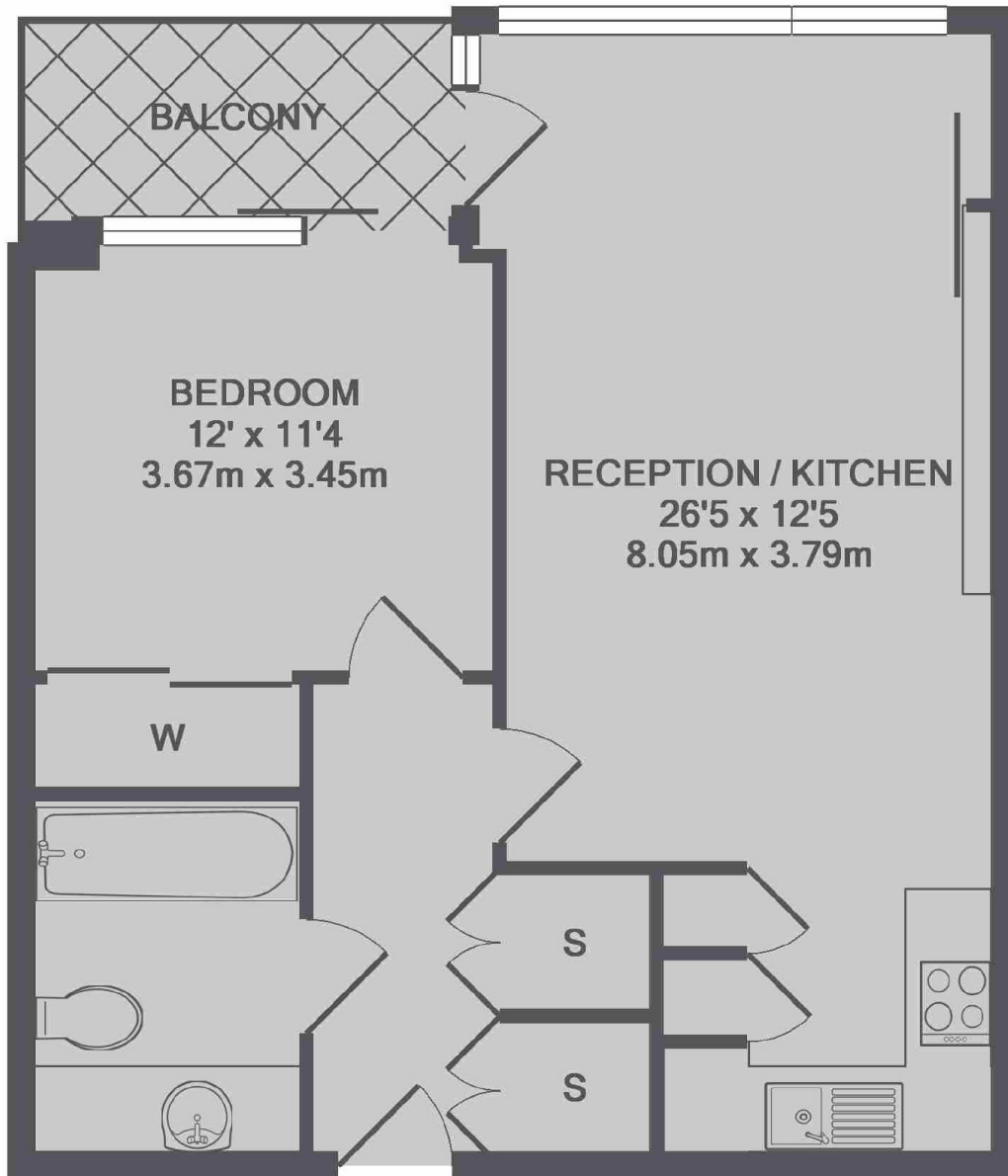
A stunning 8th floor apartment situated in Tudor House at One Tower Bridge. Furnished to the highest of standards, this property will be perfect for a city professional.

One Tower Bridge sits on the banks of the River Thames, and is considered one of the most sought after developments in London. London Bridge, Tower Hill and Tower Gateway are all within walking distance.

### Features

- One Double Bedroom
- Furnished
- Resident's Health Club
- Balcony
- 24 hour Concierge
- 8th Floor

Duchess Walk,  
London, SE1



TUDOR HOUSE, DUCHESS WALK, SE1  
TOTAL APPROX. FLOOR AREA 548 SQ.FT. (50.9 SQ.M.)

**Dexters**

Tower Bridge  
50 Shad Thames  
London  
SE1 2LY  
Lettings  
0207 650 5105

Energy Rating: B. We aim to make our particulars both accurate and reliable. However they are not guaranteed; nor do they form part of an offer or contract. If you require clarification on any points then please contact us, especially if you're traveling some distance to view. Please note that appliances and heating systems have not been tested and therefore no warranties can be given as to their good working order.

 **RICS** | Regulated  
Estate Agent  
and Letting Agent

dexters.co.uk