



STAINES ROAD, TW3

£1,300 pcm

This modern 371 sq/ft third-floor studio features Galliard Homes' premier specifications, including real oak flooring and brushed metal finishes. The space offers a designer open-plan

- Premier Luxury Specification
- Real Oak Flooring
- Third Floor Lift Access
- Seconds to Piccadilly Line
- Daytime Concierge Service
- Video Entry System

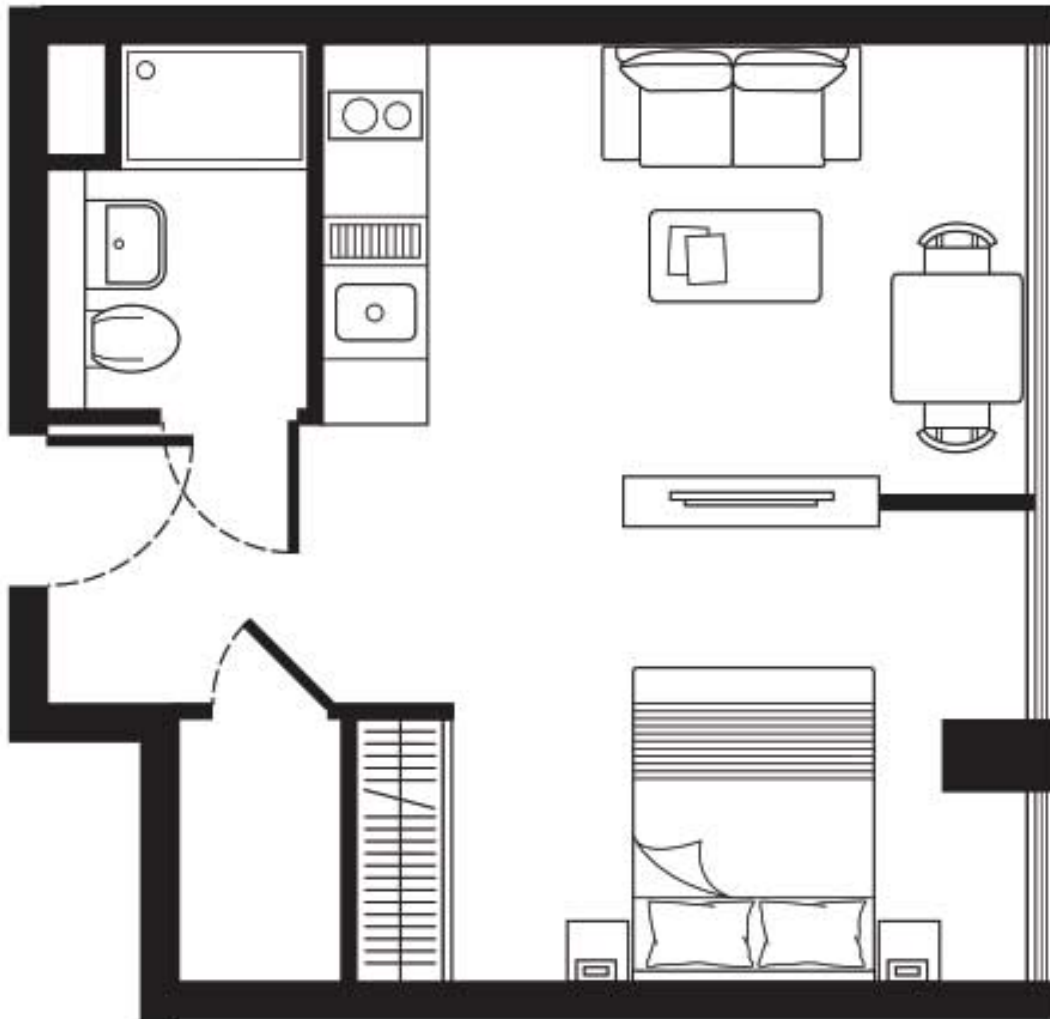


ABOUT THE HOME

Perfectly situated in the heart of Hounslow, this development is seconds from Hounslow Central Station. Residents enjoy rapid Piccadilly Line access alongside the convenience of a professional daytime concierge service.







TOTAL AREA: 34.5 sq m 371 sq ft

LiFE RESIDENTIAL

203 Trentham Court, Victoria
Road, London, W3 6BT
Sales: 020 3668 1112
Lettings: 020 3668 1111

Energy Rating: C. We aim to make our particulars both accurate and reliable. However they are not guaranteed; nor do they form part of an offer or contract. If you require clarification on any points then please contact us, especially if you're traveling some distance to view. Please note that appliances and heating systems have not been tested and therefore no warranties can be given as to their good working order.